

**Land Administration
in support of the Global Agenda:
Current FIG Policies**

Prof. Stig Enemark

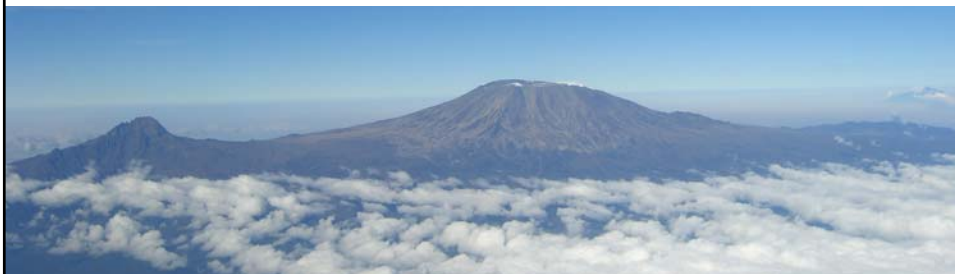
FIG President

Aalborg University, Denmark

FIG COMMISSION 7 ANNUAL MEETING
VERONA, ITALY, SEPTEMBER 2008

Current **FIG Policies**

**Flying high
while still
keeping our feet on the ground**



Current Policies

- **Flying high**
 - Global partnership with the UN-agencies incl. the World Bank in support of the global agenda such as achieving the MDGs
- **Keeping our feet on the ground**
 - Professional and institutional development at regional, national, and local level in support of the needs of our member associations and the individual surveyors.

The Role of FIG

- **Professional Development**
 - Global forum for professional discussions and interactions
 - Conferences, symposia, commission working groups,
- **Institutional Development**
 - Institutional support for educational and professional development at national and international level
- **Global Development**
 - Cooperation with international NGO's such as the UN agencies, World Bank, and sister organisations
 - Joint activities and common policy-making to reduce poverty and enforce sustainable development

The UN Millennium Development Goals

- Goal 1: Eradicate extreme poverty and hunger
- Goal 2: Achieve universal primary education
- Goal 3: Promote gender equality and empower women
- Goal 4: Reduce child mortality
- Goal 5: Improve maternal health
- Goal 6: Combat HIV/AIDS, malaria and other diseases
- Goal 7: Ensure environmental sustainability

Goal 8: Develop a Global Partnership for Development

The framework includes 18 targets and 48 indicators enabling the ongoing monitoring of annual progress

Global Partnership

- UN agencies have access to national governments and to setting an global agenda.
- But UN agencies will often depend on interest groups and NGO's for implementing this agenda.
- **FIIG** as an international NGO has access to national associations and individual professionals
- But NGO's will often depend on the UN-agencies to determine the global agenda
- **Global partnership will then establish the link that drives development for achieving the global agenda such as the Millennium Development Goals.**

Partnership with FAO

Cooperation on specific projects:

- Expropriation and compensation
- Management of State lands
- Capacity building in land administration
- Guidelines on land and natural resource tenure
- Joint seminars and publications



Partnership with UN-Habitat

Informal settlements

Traditional cadastral systems do not provide for security of tenure in informal settlements.

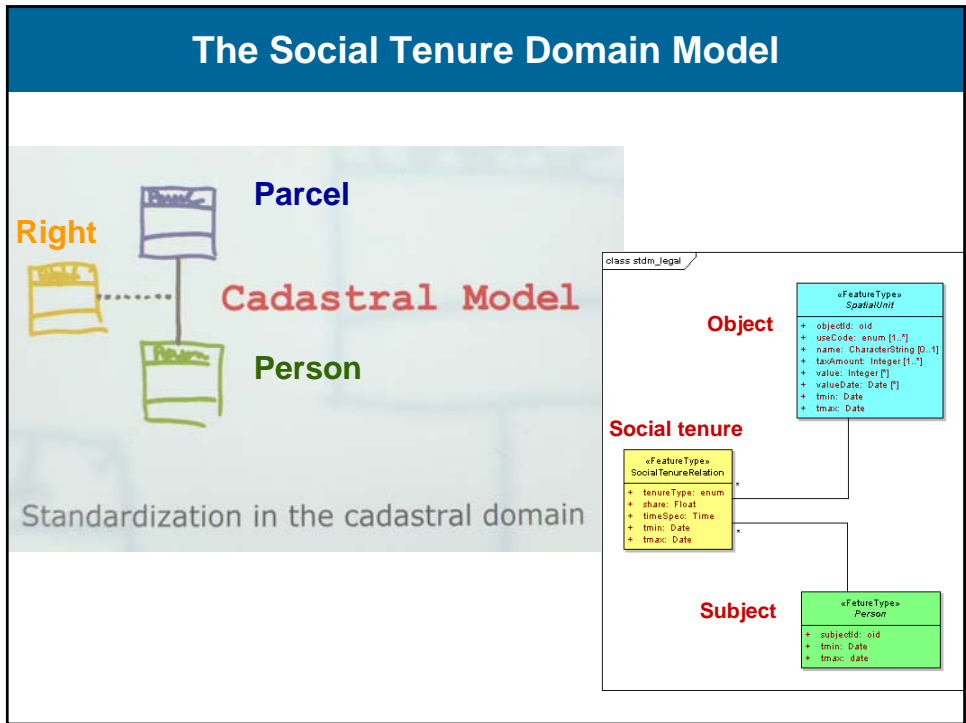
A more flexible system is needed for identifying the various kind of social tenure existing in informal settlements.

Such systems must be based on a global standard and must be manageable by the local community itself:

FIG cooperates with UN-Habitat to develop

The Social Tenure Domain Model.





Partnership with UN-Habitat - GLTN

Informal development

Unplanned settlements and areas where housing is not in compliance with current planning and building regulations (unauthorized housing).

In Albania the illegal developments contain up to 25% of the population and 40% of the built-up area of major cities in which they are located.

Inadequate planning & building control systems.

Implications of social and economic institutions in society.

Bad governance



Partnership on the cross-cutting gender issue



Partnership with the World Bank

- Mutual representation at conferences, forums and meetings
- Mutual representation in collaborative projects
- Joint publications
- Joint promotion
- Organizing a joint WB/FIG high profile conference March 2009 at the WB headquarters in Washington entitled "Land Governance in Support of the MDG's"



FIG/WB Conference on Land Governance in support of the MDGs

Six overall themes:

- Land Governance for the 21st Century
- Building Sustainable Well-Governed Land Adm. Systems
- Securing Social Tenure for the Poorest
- Making Land Markets Work for All
- Improving Access to Land and Shelter through Land Reform
- Land Governance for Rapid Urbanization



Partnership on Disaster Risk Management Surveyors without frontiers ?

Tsunami, South East Asia
December 26 2004



FIG Policies - the big swing

- **From Measurement**

Surveyors will still be high level experts within measurement science, but this special expertise is no longer the core activity due to technology development

- **To Management**

Surveyors will increasingly contribute to building sustainable societies as experts in managing land and properties

The Land Professionals

What is a good property system ?

- People in general can participate in the land market; widespread ownership; everybody can make transactions and have access to registration
- The infrastructure supporting transactions must be simple, fast, cheap, reliable, and free of corruption.
- The system provides safety for housing and business, and for capital formation

Only 25-30 countries in the world apply to these criteria.

A worldwide Comparison of Cadastral Systems

The screenshot shows the website www.cadstraltemplate.org in a Windows Internet Explorer browser. The page title is "Cadastral Template - A Worldwide Comparison of Cadastral Systems". The page features logos for PCGAP-Working Group 3, The University of Melbourne Department of Geomatics, and FIG Commission 7. The main content includes sections for "Data per Country", "I. Data per Data Fields", "II. Principles and Statistics", "Documents", and "Latest Updates". A "Visitor locations" map is visible in the bottom right corner.

www.cadstraltemplate.org

FIG Policies in Land Administration

- **From Cadastre**

With a focus on cadastral surveying and mapping for securing land rights and as a basis for valuation and taxation of land

- **To Land Management**

With a focus on land administration systems providing a country's infrastructure for implementation of its land-related policies and land management strategies in support of sustainable development.

The Land Professionals

FIG publications



From Cadastre to Holistic and Pro Poor Land Management

- Holding of rights to land
- Economic aspects of land
- Control of land use and development

Administering the people-land relationship through

- Land Policy
 - Land Management
 - Good Governance
- and
- Building the capacity to deal with this

Building the Capacity
- the future belongs to our children



