


1st Young Surveyors Conference
4th & 5th May, 2012
Palazzo Corrodi, Cassa Geometri
Rome, Italy



Knowing To Create The Future



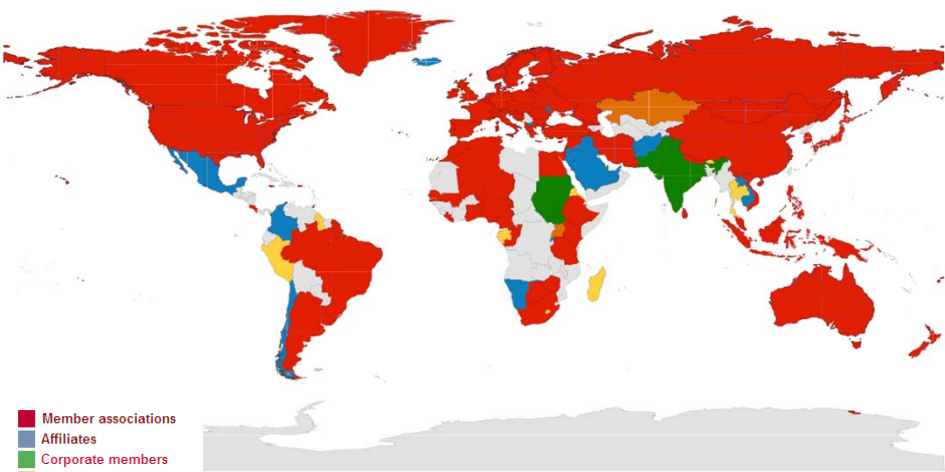


FIG WORKING WEEK 2012
May 6 - 10 2012
Rome, Italy



- Member associations
- Affiliates
- Corporate members
- Correspondents
- Academic members

105 Member Associations; 41 Affiliate Members; 95 Academic Members & 28 Corporate Members
130 Countries





FIG WORKING WEEK 2012
May 6 - 10 2012
Rome, Italy

The screenshot displays a GIS application window with several components:

- 3D SURFACE MAP (IMAGE):** A 3D topographic map showing terrain elevation with a color gradient from green (low) to brown (high).
- 3D CONTOUR MAP (IMAGE AND DXF FILE):** A 2D contour map showing elevation lines, with a vertical scale on the right ranging from 0 to 12,000.
- DATA FROM TELUK KEMPEDAK TRIP 13 JULY 2007:** A data table with columns for 'Station', 'Elevation', and 'Remarks'. The table contains 15 rows of data.
- Map View:** A 2D map showing a cadastral plan with numbered plots (e.g., 27537, 7886, 7887, 7888, 7889, 7890, 7891, 7892, 7893, 7894, 7895, 7896, 7897, 7898, 7899, 7900, 7901, 7902, 7903, 7904, 7905, 7906, 7907, 7908, 7909, 7910, 7911, 7912, 7913, 7914, 7915, 7916, 7917, 7918, 7919, 7920, 7921, 7922, 7923, 7924, 7925, 7926, 7927, 7928, 7929, 7930, 7931, 7932, 7933, 7934, 7935, 7936, 7937, 7938, 7939, 7940, 7941, 7942, 7943, 7944, 7945, 7946, 7947, 7948, 7949, 7950, 7951, 7952, 7953, 7954, 7955, 7956, 7957, 7958, 7959, 7960, 7961, 7962, 7963, 7964, 7965, 7966, 7967, 7968, 7969, 7970, 7971, 7972, 7973, 7974, 7975, 7976, 7977, 7978, 7979, 7980, 7981, 7982, 7983, 7984, 7985, 7986, 7987, 7988, 7989, 7990, 7991, 7992, 7993, 7994, 7995, 7996, 7997, 7998, 7999, 8000). A red square marker is labeled 'Kamsan Putera Apartment'.
- Field Photograph:** A photograph showing two surveyors in the field. One is using a yellow total station, and the other is holding a red prism. They are standing on a dirt road with a white and red striped barrier.

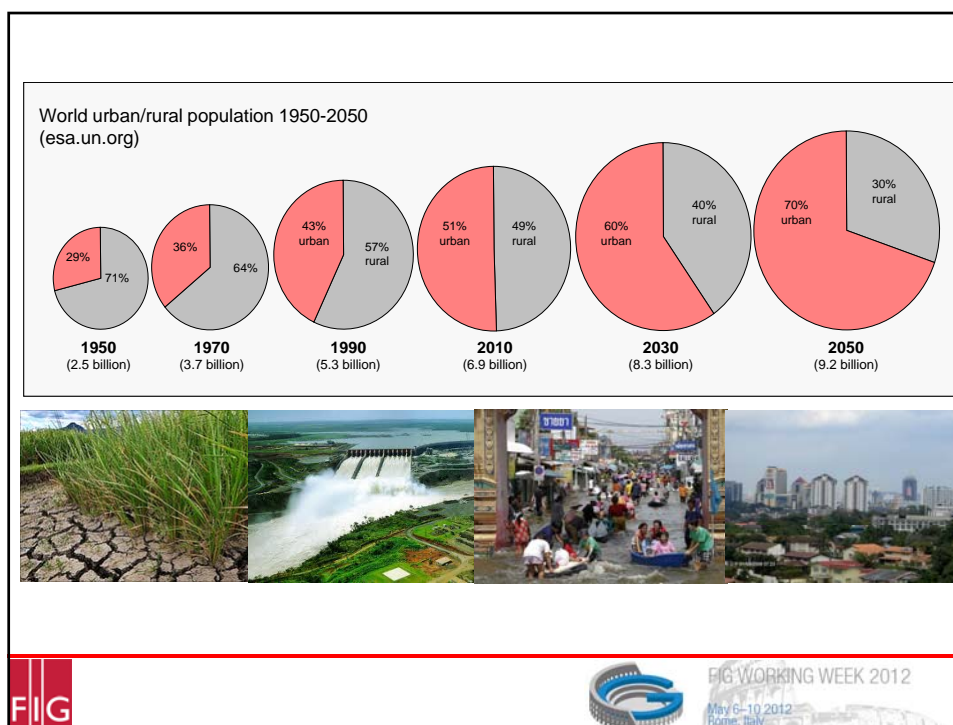
The bottom of the screenshot features the **FIG** logo and the text: **FIG WORKING WEEK 2012**, **May 6-10 2012**, **Rome, Italy**.

The infographic consists of several parts:

- More than 1.02 billion hungry people:** A pie chart showing the distribution of hungry people by region. The data is as follows:


Region	Number of Hungry People (Millions)
Asia and the Pacific	642
Sub-Saharan Africa	265
Latin America and the Caribbean	53
Near East and North Africa	42
Developed countries	15
- One sixth of humanity undernourished (FAO, 2009):** Text describing the global food security issue.
- Field Photograph:** A wide-angle photograph of a lush green agricultural field with rows of crops, under a dramatic, cloudy sky. The **IRRI** logo is visible in the bottom right corner.
- Farm Machinery:** A photograph of a green combine harvester in a field.
- Dam:** A photograph of a concrete dam structure with water flowing through its spillways.

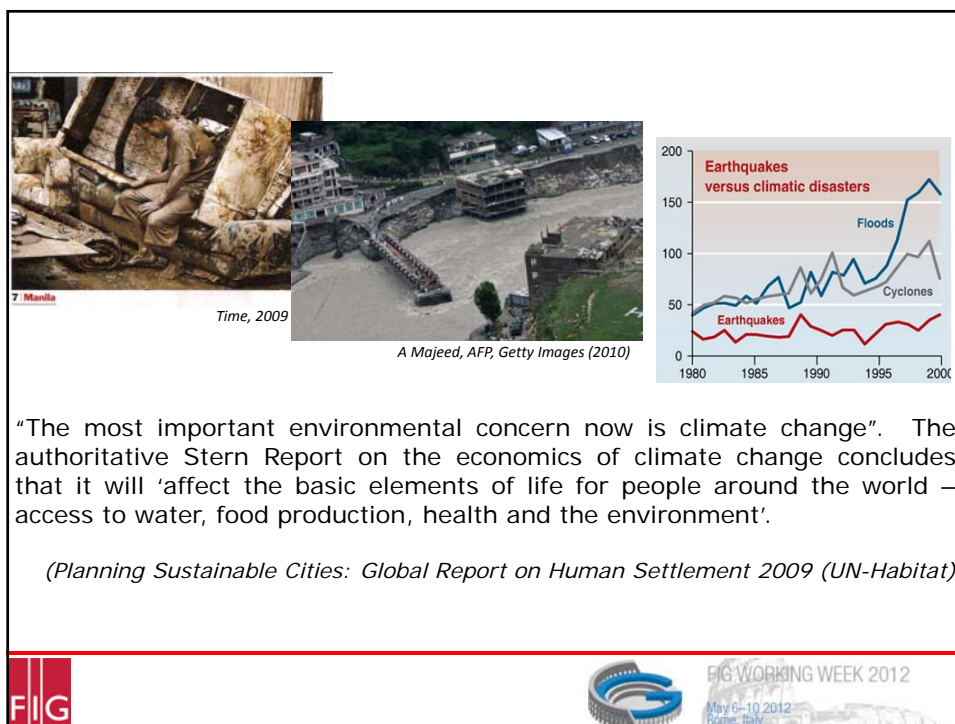
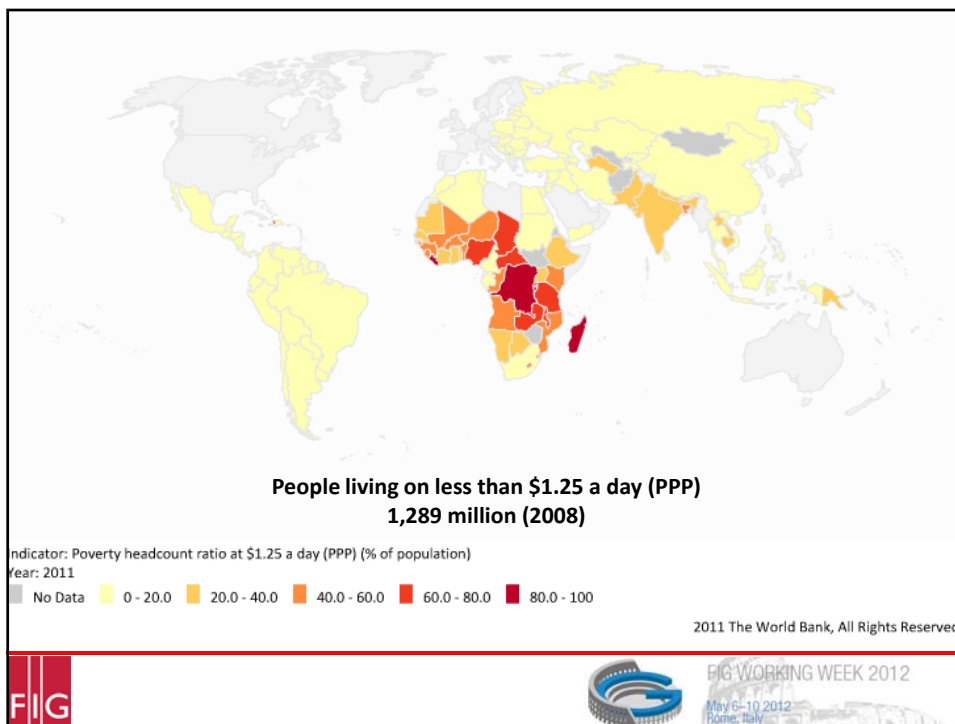
The bottom of the infographic features the **FIG** logo and the text: **FIG WORKING WEEK 2012**, **May 6-10 2012**, **Rome, Italy**.



	1950	1975	2007	2025	2050
World Urban Population (million)	737	1,518	3,294	4,584	6,398
Percentage	29.1%	37.3%	49.4%	57.2%	69.6%
More Developed Region (million)	427	702	916	995	1,071
Less Developed Region (million)	310	817	2,382	3,590	5,327

Close to 1 billion people, or 32 per cent of the world's current urban population, live in slums in inequitable and life-threatening conditions, and are directly affected by both environmental disasters and social crises, whose frequency and impacts have increased significantly during the last few decades.
(UN-Habitat, 2009)

FIG  FIG WORKING WEEK 2012
May 6-10, 2012
Rome, Italy



United Nations baseline forecast for the growth of world gross product (WGP) is 2.6 per cent for 2012 and 3.2 per cent for 2013, which is below the pre-crisis pace of global growth

Global business barometer
Balance of respondents expecting global business conditions to improve, 2011, percentage points

Region	May	July	October
Western Europe	15	10	10
Latin America	35	25	25
Overall*	25	15	15
Asia	20	15	15
Eastern Europe	15	10	10
North America	25	20	20

Do you expect the euro zone to break up? October 2011, % responding

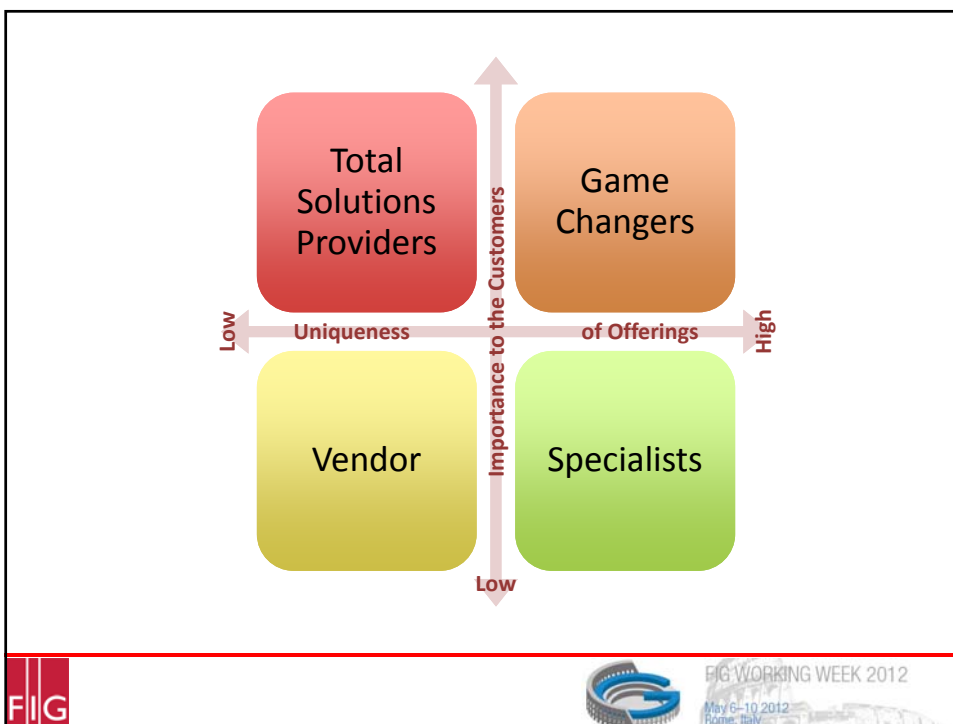
Region	Yes	No
Asia	10	90
North America	15	85
Middle East and Africa	20	80
Overall	25	75
Latin America	30	70
Western Europe	35	65
Eastern Europe	40	60

Source: The Economist/IFF survey *Includes Middle East and Africa

Nov 10th 2011, 17:03 by The Economist Online

Photograph: Pawel Kopczynski/Reuters

FIG WORKING WEEK 2012
May 6-10 2012
Rome, Italy



“The rapid advances in geospatial information and technologies, and their easy accessibility, have made such information an invaluable tool in research, policy and business planning and implementation. Across all sectors of society, it is increasingly recognized that the effective use of geospatial information helps address many of the current humanitarian, peace and security, environmental, and development challenges facing the world, such as climate change, natural disasters, disease pandemics, famines, population displacement, food and economic crises, which are of a cross-border nature requiring both global, regional and national policy responses.”

More than 1.02 billion hungry people

Chaiwat Subprasom, Reuters (2011) 2009

(United Nations Secretary General's Report to the 64th Session of the Economic and Social Council, 2011)

7. Manila Time,

GGIM has a vision to migrate to a paradigm of **managing all information spatially**

FIG WORKING WEEK 2012
May 6-10 2012
Rome, Italy

Cadastre 2.0

Need a shift in thinking.....

- Multipurpose
- Transparent
- Accountable
- Citizen Engagement
- Cloud Computing
- Online Data
- Improving Data Quality
- Mobile
- 3D

accuracy speed completeness portals quality data

feedback wiki SDI LADM e-government STDM metadata maps & apps

currency open government Rich Data Model web services connectivity

© Brent Jones

FIG WORKING WEEK 2012
May 6-10 2012
Rome, Italy

Surveyor 2.0



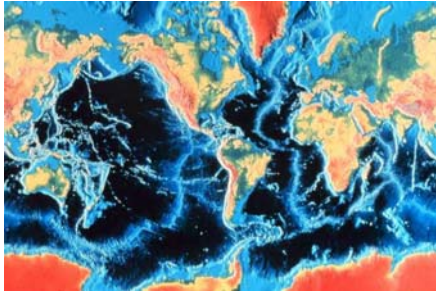


FIG WORKING WEEK 2012
May 6 - 10 2012
Rome, Italy

Surveyor 2.0

Geodesist
Co-ordinate systems
Elevation Models
GNSS Infrastructures
This is the Foundation



© US National Oceanic and Atmospheric Administration



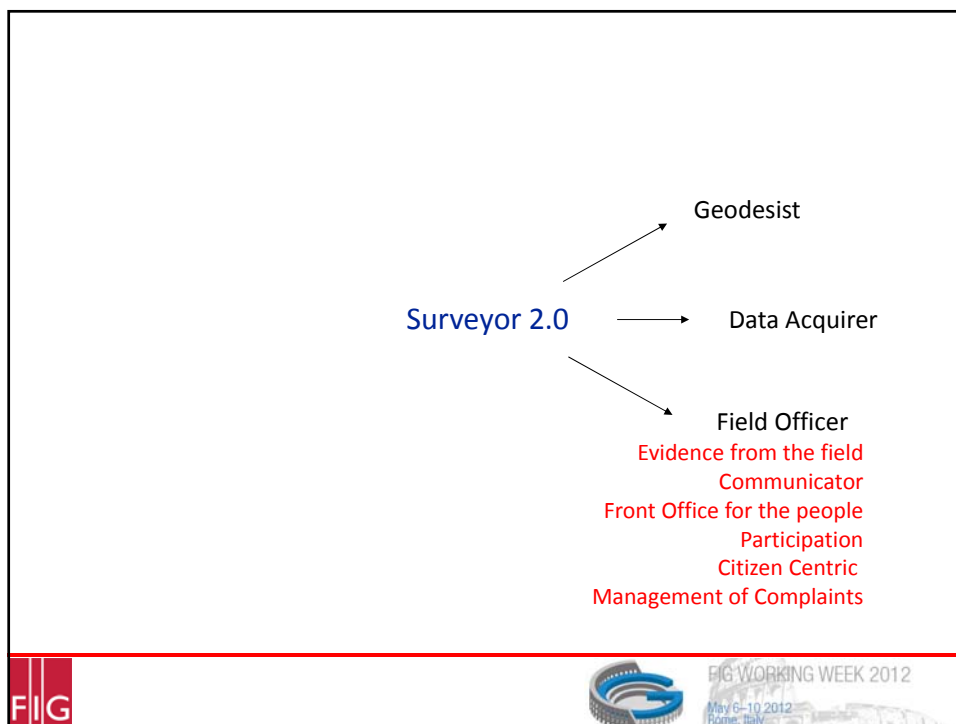
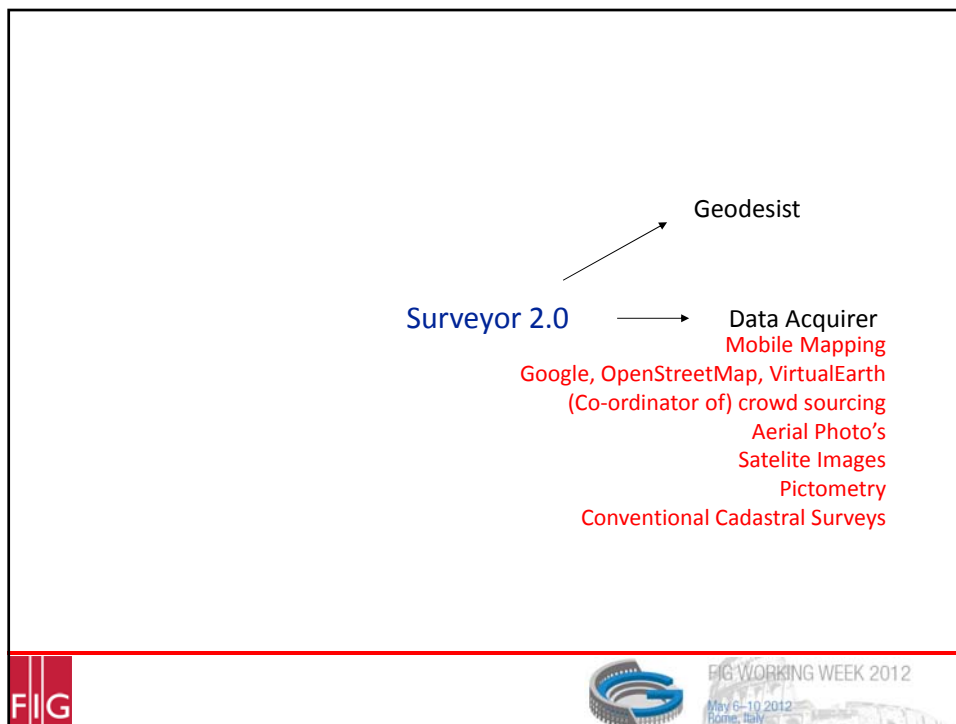
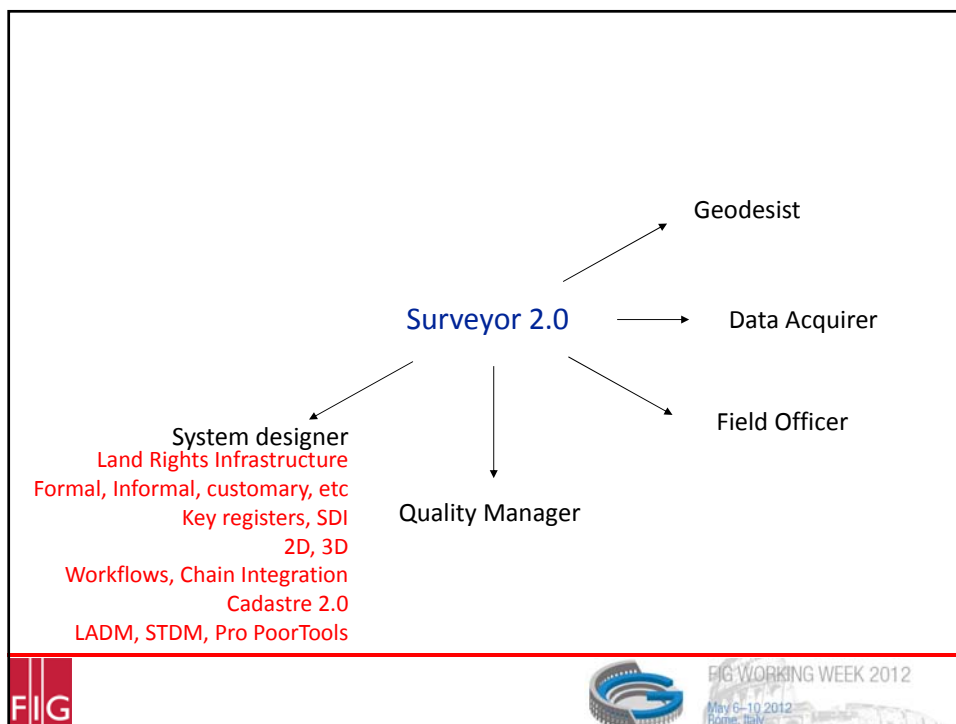
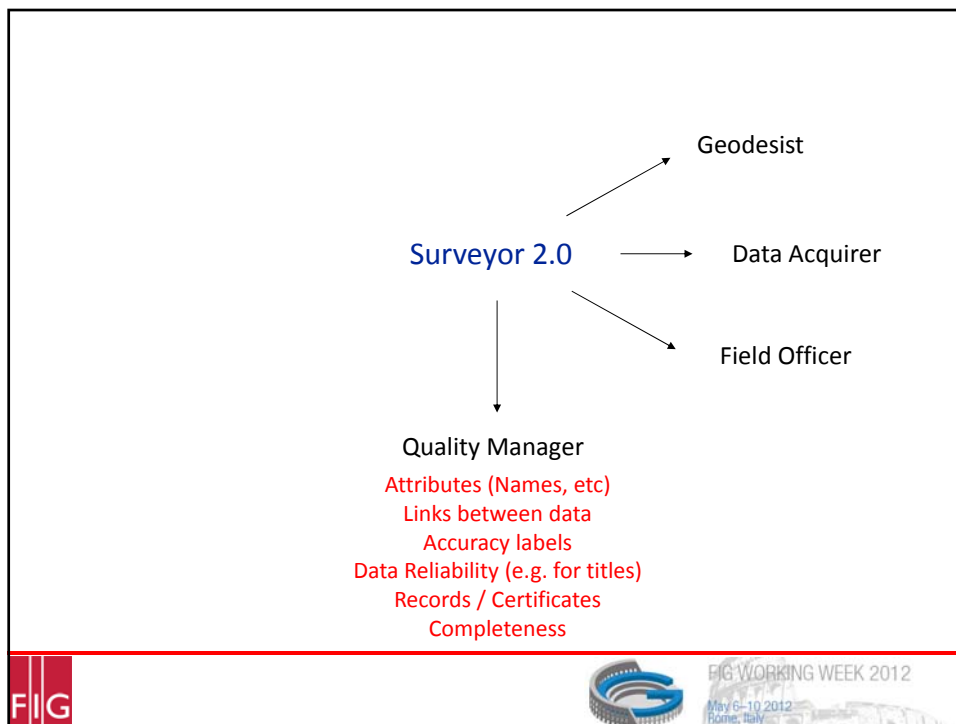
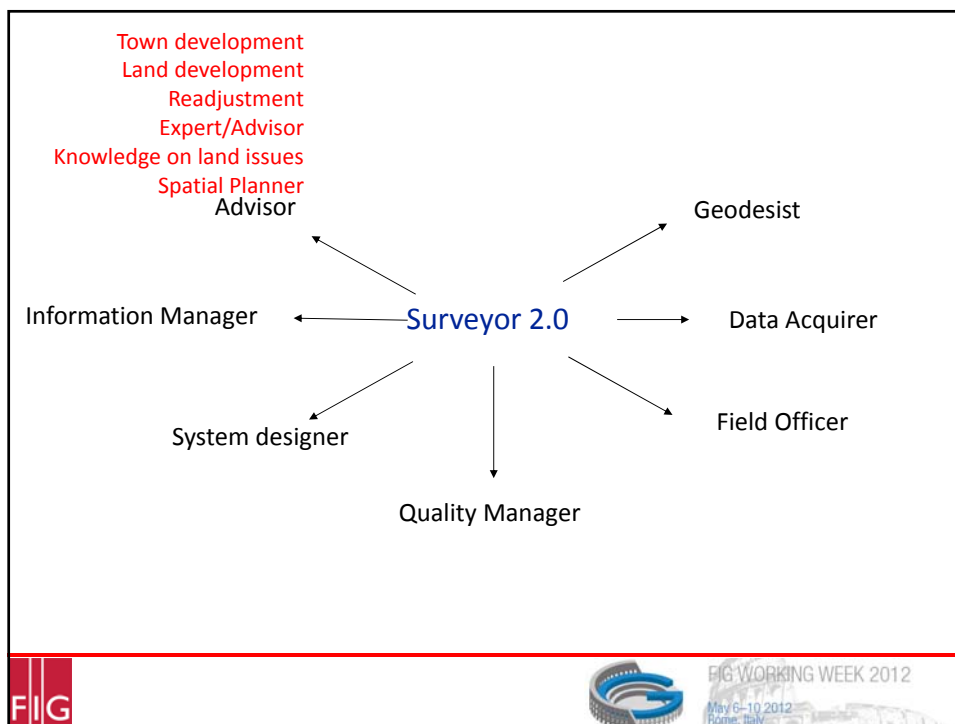
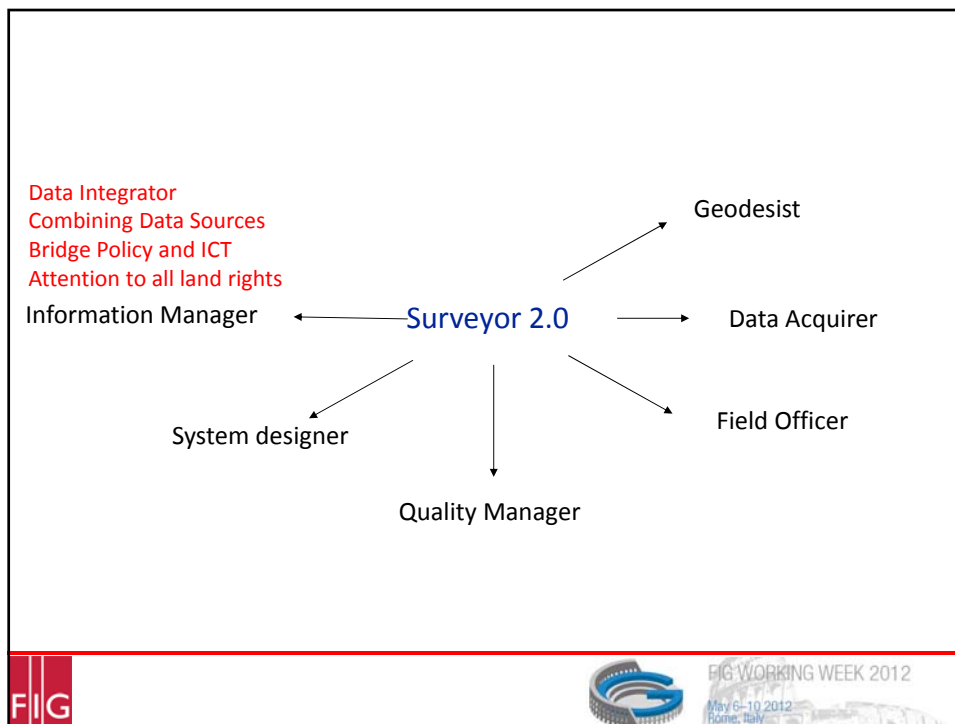
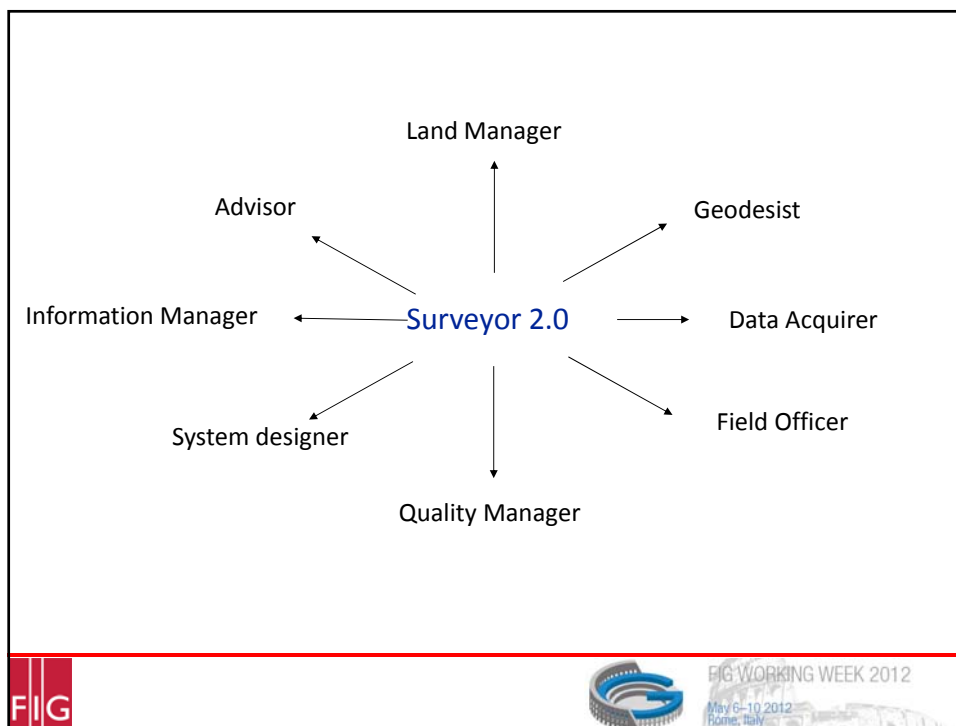
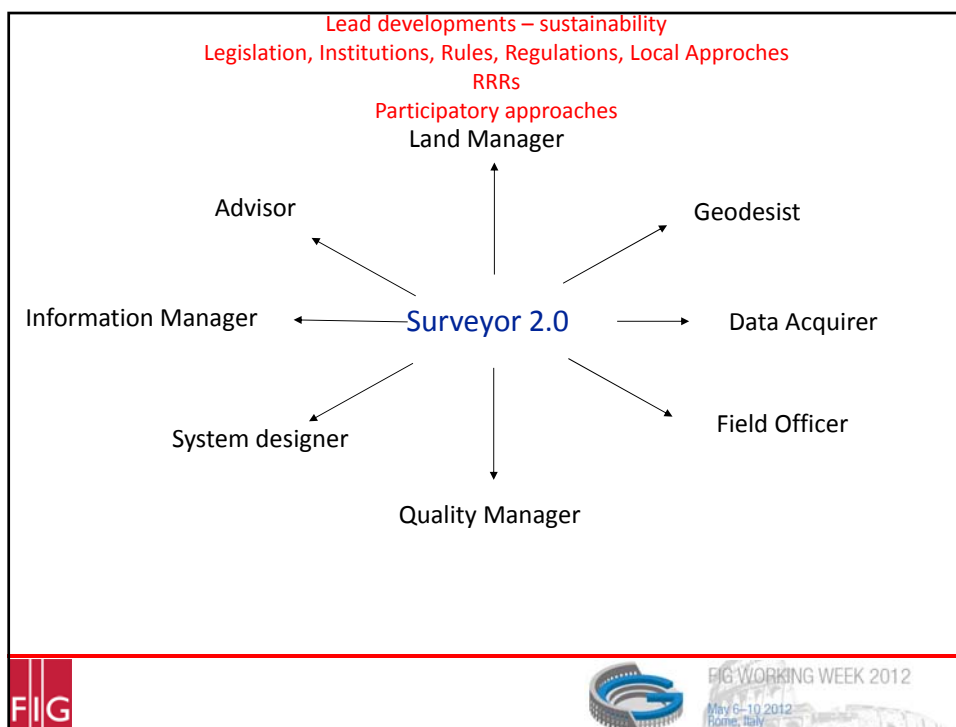


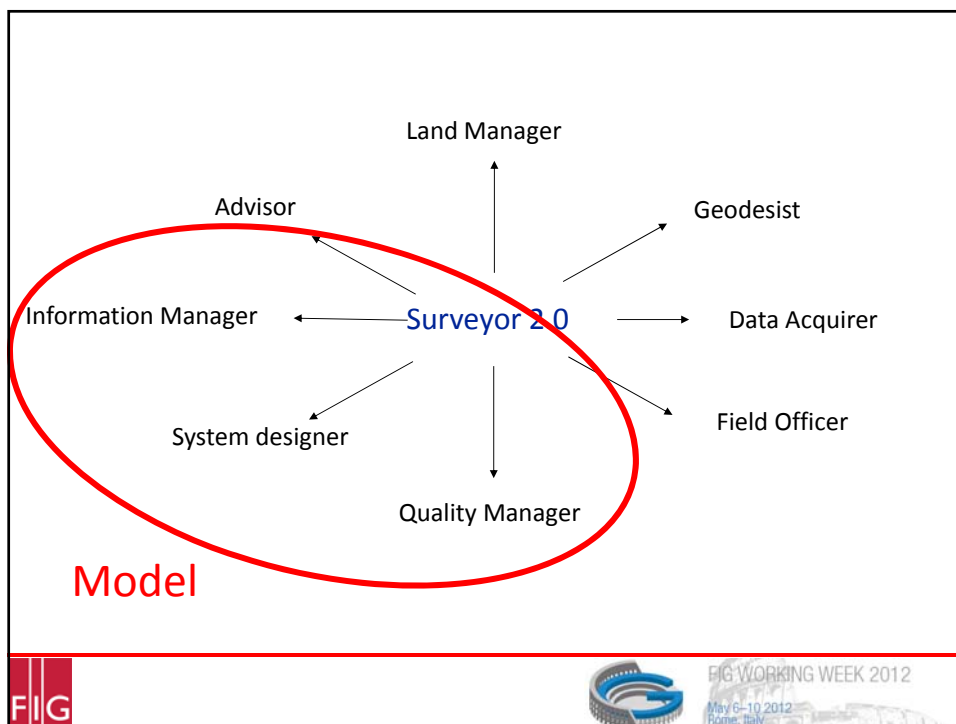
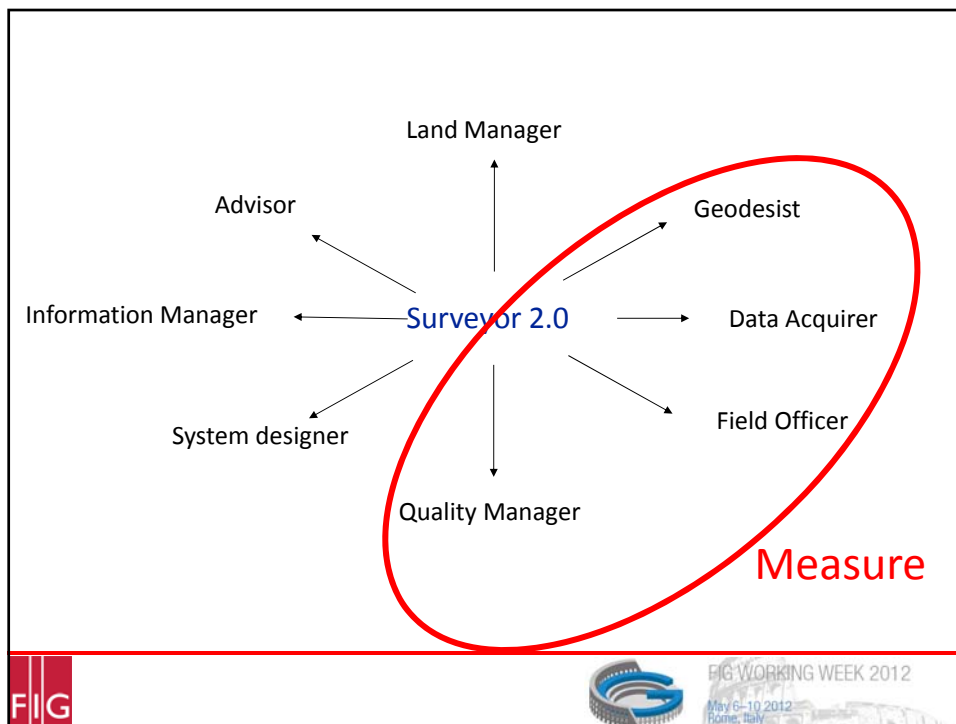
FIG WORKING WEEK 2012
May 6 - 10 2012
Rome, Italy

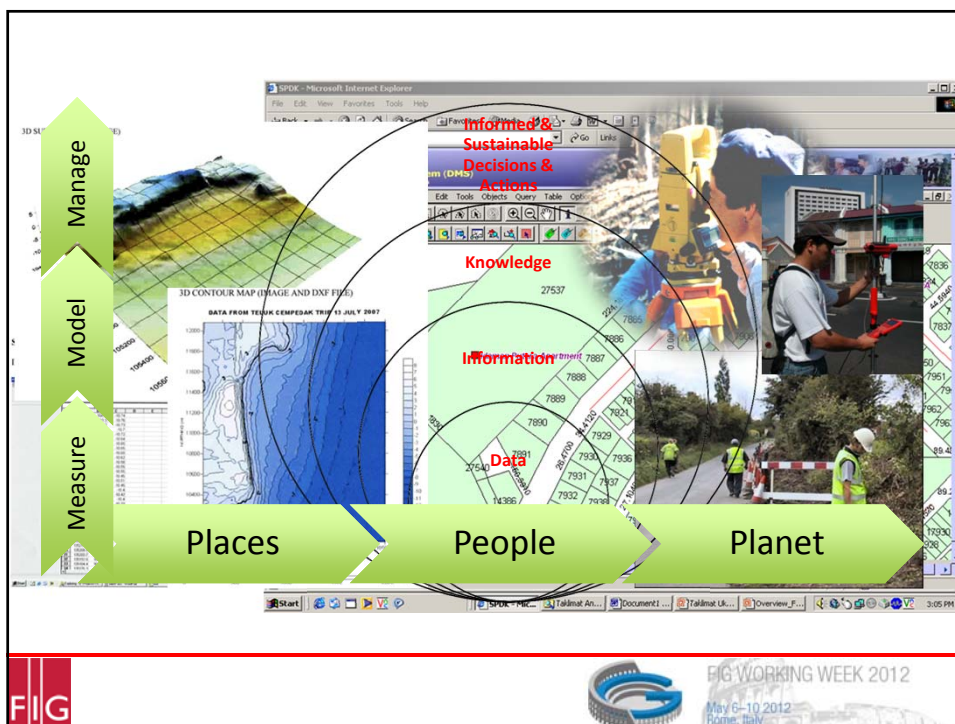
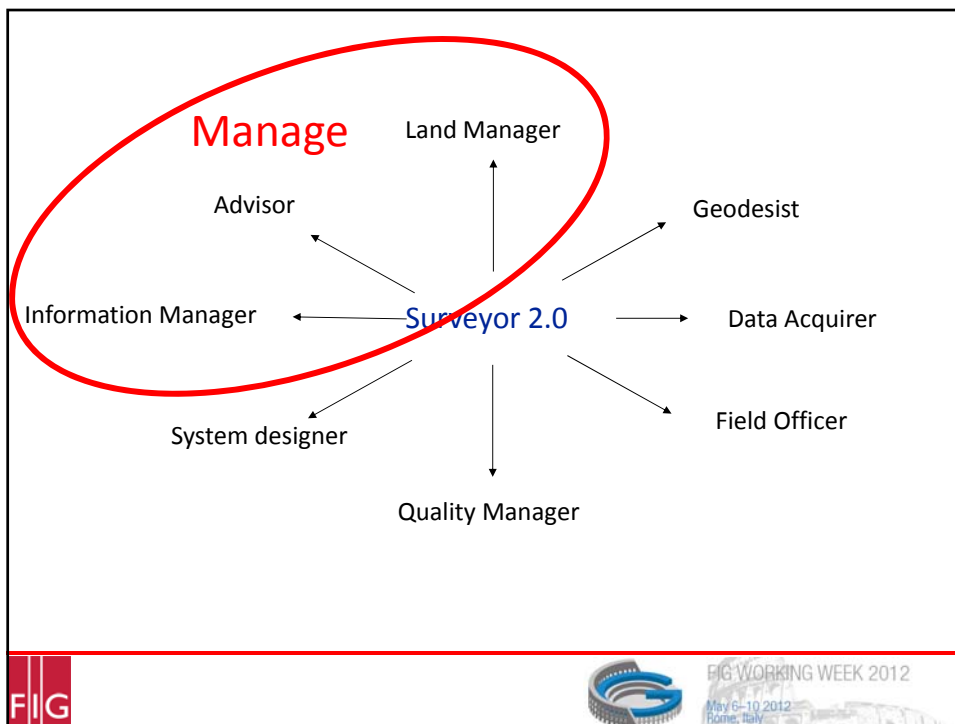












"Like water, this rising tide of data can be viewed as an abundant, vital and necessary resource. With enough preparation, we should be able to tap into that reservoir - and ride the wave - by utilising new ways to channel raw data into meaningful information. That information, in turn, can then become the knowledge"

(Les Alberthal [alb95])

FIG

FIG WORKING WEEK 2012
May 6-10, 2012
Rome, Italy

There is no doubt that surveyors are critical to the future society of both developed and developing world

Clarissa Augustinus (UN-Habitat)

FIG

FIG WORKING WEEK 2012
May 6-10, 2012
Rome, Italy