



## FIG working group on voting rights

### Report

### Historic part



## FIG March 2012

### Preamble

During FIG Working week in Marrakech in May 18-22 a discussion about the voting system in FIG took place in a Break Out session on Friday 20 May.

The outcome of the Break Out session and the discussion on the General Assembly was the creation of a working Group to prepare a Report to be subject for discussion during the Working Week in Rome 2012.

The working Group on Voting Rights was formed shortly after Marrakech and the members is listed in Appendix 1.

On basis of studies in the Archives in various member Countries, contributions in Marrakech, Contributions from the members of the working Group this Report has been made.

It covers the discussion and papers so far and it is the intention that it should support the debate and decision concerning the voting procedures in FIG

3. March 2012

Henning Elmstroem  
Vice Chair of the Working Group

## Table of Content

| Chapter | Page | Subject   |
|---------|------|---|
|         | 3    | Table of content and enclosures                                     |
| 1       | 4    | Introduction  |
| 2       | 4    | FIG History of Voting procedures                                    |
| 2a      | 4    | The Statutes as from 1926   |
| 2b      | 14   | Summaries about the Statutes  |
| 2c      | 14   | Voting what about   |
| 2d      | 16   | Voting rights in other organizations                                |
| 3       | 18   | FIG figures and numbers November 2011                               |
| 3a      | 18   | Number of votes in FIG  |
| 3b      | 18   | The present Fee system  |
| 3c      | 20   | The fee system approved in 2009                                     |
| 4       | 21   | Discussion about the Voting system                                  |
| 4a      | 21   | One Country One Vote  |
| 4b      | 21   | One Organization one Vote   |
| 4c      | 21   | Differential voting approaches                                      |
| 5       | 22   | The Challenge   |
| 6       | 22   | Proposal and recommendation<br><i>(not about the voting system)</i> |
|         | 24   | Appendix 1 – the WG on voting rights                                |
|         | 25   | Appendix 2 FIG members  |

### Enclosures:

- 1) FIG Working Group on voting rights. List of members
- 2) The working background for the WG of July 10 2011
- 3) Notes of the Break out session on Voting Rights, Marrakech 2011
- 4) List of the number of FIG members - Historical overview.
- 5) 64 PC meeting in Singapore May 1997, Minutes (extract)
- 6) President letter of 22. April 1998
- 7) Treasurer letter of 22. April 1998
- 8) Secretary General letter of 21 May 1998
- 9) Considerations by the meetings in Brighton, Agenda Item 16
- 10) Letter from Germany dated 2. July 1998
- 11) Letter from France dated June 19, 1998
- 12) Minutes from the 21 FIG GA in Brighton dated 29 September 1998
- 13) Minutes from FIG GA Israel 2009 – Item 21.
- 14) Minutes from FIG GA Marrakech May 2011 – Item
- 15) letter from Germany dated 29 august 2011
- 16) participation of member organizations , 2012-0112
- 17) Extract 21 July 1998 from Brighton
- 18) FIG Working Group on Voting Rights- Commissioning notes.

## **Chapter 1 Introduction**

As a result of the discussions by the 2011 General Assembly the GA decided to form a Working Group on Voting Rights.

The timetable is:

- 31 January 2012 Discussion paper to be finalized and provided to the Council.
- 28 February Council notes the paper and clarifies any points of procedure and information with the Chair of the WG
- Mid-march 2012 Discussion paper and Council covering note (including any proposed changes to FIG statutes and Internal Rules, if the WG has reached consensus on this) are published with the GA papers.

The work of the WG is to bring a discussion paper on voting rights to the 2012 General Assembly. It is for the WG to determine the work that is required to achieve this, whilst noting that relevant issues include:

- Any weighting of votes
- Any inclusion of votes by members other than Member Associations – if so, with what weight and on what topics
- What (if any) changes to the FIG Statutes and Internal Rules are necessary to implement the WG's recommendations

## **Chapter 2 FIG History of voting procedures**

FIG was founded on July 18, 1878 in Paris.

The first statutes was drawn up in 1926 and revised at the 7th PC meeting in 1933 in Rome and approved in London on July 18 1934.

In 1949 the 1934 Statutes were revised in Lausanne.

In 1958 there was a revision of the Statutes, but to our knowledge no change of the voting system. In 1967 in Ottawa the 1958 Statutes were revised and it was printed in a special pamphlet and it was also printed in the proceedings of the XIII Congress in Rome.

These statutes from Rome 1967 were only slightly revised as it was stated in 1985 in Katowice, Poland. We have no indication of major changes in between.

In 1986 the Statutes was printed in English, German and French and this version lasted until the 1998 Congress in Brighton, England

For further detailed information as from 2001 look at FGI website – Administration

An overview of the discussion and papers presented in the discussion from 1986 until today will be given as follows:



| Statutes  | Voting rules and decisions   | Comments   |
|---|--|--|
| <p>1986<br/>Statutes adopted by the 18th General Assembly</p> | <p>Article 21<br/>Save for any specific directions to the contrary in the Statutes, all decisions of the General Assembly shall be taken by a simple majority vote. In the case of an even vote the President shall cast the deciding vote</p> <p>Article 22<br/>Voting shall be by one vote per member or by one vote per country if there are several members from a single country. It shall be taken by a show of hands, unless a ballot is requested.</p> <p>Article 23<br/>Decisions on matters of routine administration shall require a simple majority vote of members present. Decisions on the appointment of Honorary President and Honorary members or the exclusion of a member of the Federation shall require a three-quarters majority vote of members present.</p> <p>Article 25<br/>The Permanent committee is the administrative Council of the Federation.<br/>It is composed of members of the Bureau, delegates from the member Associations, the Chairmen of the Technical and Scientific Commissions and the ad hoc Commissions as well as the Chairmen og the Permanent Institutions, the Auditors, Honorary presidents and honorary members.</p> <p>Article 26<br/>The functions of the permanent Committee in particular are:<br/>(A) To make proposal to the General Assembly about the administration..<br/>(B) To decide – on the proposal from the Bureau - the place, date and agenda for Congresses, and meeting of the Permanent Committee<br/>(C) To appoint, on the proposal from the Bureau.. the Chairmen and vice-chairmen of the Technical and Scientific commissions ...</p> | <p>One country<br/>One vote<br/>If more than one association in a Country they must cooperate on a unanimous vote.</p> <p>A huge Group</p> <p>The decisions about the daily business not in the General Assembly</p> |
| <p>1997</p>   | <p>In the beginning of 1997 FIG Bureau had proposed changes in the subscription structure to be on the agenda as Topic 26 in Singapore later 1997</p> <p>Germany – President Hans Josef Platen comments on March 25 telling that</p>   |  |

|  |   |  |
|--|---|--|
|  | <p>“DVW welcomes the introduction of a subscription depending on the number of members”</p> <p>Concerning the Voting structure it is noted that the FIG “Bureau obviously no longer wants to keep to its principle of “one country-one vote” (see enclosure FIG (PC)P(97), page 2, statutes 6.6.”</p> <p>It is underlined that DVW thinks that this development goes in the wrong direction. If the Bureau does not keep to the present principles (one country-one vote) “ we see the danger that more organizations will be founded in countries with a lot of members.”</p> <p>The FIG president Peter Dale replies 3<sup>rd</sup>. April 1997:<br/>“ Firstly, with regard to one-country-one-vote it was certainly my view that this was desirable. When we undertook the review of all Statutes and Internal Rules we realized that this would mean that individual members associations would not necessarily be entitled to a vote, even though were responsible for paying their own membership subscription. It seemed on balance only fair that those who pay can vote. If we continue to accept the varied definitions of a Surveyor that FIG has previously agreed, then inevitably there will in some countries be more than one member association. The current trend in eastern Europe for example is for separate associations of Valuers and land Surveyors. If FIG is to broaden its membership then these differences must be accommodated.</p> <p>There is a conflict between FIG as a federation of member associations and FIG as a federation of countries. In some cases (UK, Germany, France) that comes to the same thing but it is premature to force a unified profession on some merging countries, let alone in countries such a the United States. My fear is that by pursuing the principle og one-country-one-vote we will exclude sectors of our profession that we claim to represent.”</p> <p>And Germany replies 14. April 1997:<br/>“ I can understand your ideas regarding to the voting structure. But I think that we are all Surveyors in the Various fields of our profession and therefore should try in all countries as well as in FIG to come together to one association , may be an umbrellas-association”</p> <p>21 April 1997 Jane Wolley Bureau Director sent out a preparing letter for the 1997 Permanent Committee</p> |  |
|--|---|--|

|  |   |  |
|--|---|--|
|  | <p>meeting stating that papers in support of agenda Item 26 (subscription structure)</p> <p>It is noted that the exchange of letters between the President of FIG and The President of DVW, Germany are attached.</p> <p>On April 1997 two letters were sent out (see enclosure 6 and 7) from president Peter Dale and Treasurer Michael Rainbird</p> <p>The discussion in the letter from Peter Dale was generated to</p> <ol style="list-style-type: none"><li>1. Any association which meet the Criteria for admission should be able to join FIG</li><li>2. votes should continue to be exercised by member associations</li><li>3. the only exception to weighed voting should be the granting of one extra vote to a member association with more than 4.000 members.</li></ol> <p>And reflecting the debate – Unfortunately short – The PC (Permanent Committee) was in favor of (1). On (2) the majority were in favor of votes being exercised by Country rather than by member association. On (3) only a minority of delegates, mainly from the larger member associations, expressed a preference for weighted voting</p> <p>In his letter of 22 April 1997 President Peter Dale concludes on the PC meeting: ( see enclosure 6)</p> <p>“The view was expressed in Singapore that voting by country would enhance the perception of FIG as speaking on behalf of the profession in particular countries and thus strengthen FIG’s international credibility.” After careful consideration the Bureau has decided that it is unable to share that view”</p> <p>And further concerning the fee structure the Bureau supports the proposal giving any member organization with more than 4.000 members an additional vote</p> <p>The other letter - from the Treasurer – presents the proposals for the fee introducing a sliding scale related to the number of members having more than 4.000 members</p> <p>The treasurer notes that no comments has been received since the PCC meeting in Singapore and the Bureau therefore has decided to seek the approval from the General Assembly</p> |  |
|--|---|--|

|   |   |  |
|---|---|--|
|   |   |  |
| <p>1997</p>                                       | <p>On the 64 th. meeting of the Permanent Committee held in Singapore 12-15 may 1997 the question about the Subscription Structure and the Statutes and Internal Rules was on the table</p> <p>The draft for the Statutes and Internal Rules tells in paragraph 6.6 The number of votes which may be cast by a member organization is one, except that any member association having more members than a number set by the General Assembly shall be entitled to one additional vote. (enclosure 5)</p> <p>From the minutes<br/>Item 30. Statutes and Internal rules (FIG(PC)P()/21)</p> <p>Vice President Grahame Lindsay sought the guidance of the PC, to assist with the preparation of a final and potentially acceptable draft for which approval would be sought in 1998</p> <p>From the discussion can be seen<br/>The PC debated the alternatives of votes being cast by member associations or by country and votes by a substantial majority in favor of the latter.</p> <p>Equal or weighted voting was debated too and ...Sixteen delegations (mainly from the smaller member associations) were in favor of each vote having equal value and nine delegations expressed a preference for weighted voting.</p> |  |
| <p>1998<br/>The Congress in Brighton, England</p> | <p>In the preparation period the Treasurer and the President sent out a letter 22 April 1998. Enclosure number 6 and 7</p> <p>In the letter from the Secretary General 21 May 1998 is:<br/>.. To assist this process (decisions) the proposed new draft FIG statutes and Internal Rules and the proposed new subscription structures have already been Circulated (the President´s and the Treasurers letters of 22 April) ...</p> <p>And the Agenda tells:<br/>20. Subscription Structure<br/>Preliminary discussion based on the Treasurer´s letter dated 22 April 1998 to member associations, Commission Officers, Directors of permanent institution, correspondents and sponsors – <b><u>please bring your copy with you.</u></b></p> <p>And further</p>  |  |

|  |  |   |
|--|--|---|
|  | <p>21. Statutes and Internal rules<br/>Preliminary discussion based on the drafts circulated under cover of the President's letter dated 22 April 1998 to member associations, Commission Officers, Directors of permanent institution, correspondents and sponsors – <b><u>please bring your copy with you.</u></b></p> <p>The final discussion on Item 20 and 21 was placed later in Item 26 Subscription structure and 27 Statutes and Internal rules.</p> <p>As mentioned earlier the first edition of the Agenda and most of the supporting papers were sent out.</p> <p>The preparation for the discussion was made in a paper FIG(GA)P(98)16 15 May 1998 (see enclosure 9) for consideration by the meetings in Brighton.</p> <p>Item 4 Number of members of a member association<br/>Has the following comments:<br/>The Bureau invites the General Assembly to agree that this should be 4,001 upwards</p> <p>On June 19<sup>th</sup> 1998 France – President Michael Mayoud - addressed a letter to the Bureau and to all delegations of FIG telling that (see enclosure 11)<br/>Concerning Voting rights the views is summed up by stating: “ As already expressed by the 64<sup>th</sup> PC , let's therefore keep to one vote per country - .. and only one vote whatever are the size of the country ..”</p> <p>Later 21. July 1998 an Explanatory paper was sent out for review by the delegations prior to the paper being considered at the second session of the General Assembly on 25 July 1998.<br/>As requested by the leader of the German delegation, a copy of its letter to the Bureau dated 2 July is also attached.</p> <p>Please note that this paper was released during the General Assembly between the first and second session of the General Assembly.</p> <p>As can be seen in enclosure 17 the Bureau in the paper from 21 July proposes :<br/>One vote per member association except that any member association having more members than a number set by the General Assembly shall be entitled to one additional vote.</p> | <p><i>Telling that more than one vote is possible</i></p> |
|--|--|---|

|  |   |   |
|--|---|---|
|  | <p>The German letter from 2 July 1998:<br/>Germany was of the opinion that the discussion about “one country – one vote” as a recommendation for Brighton was concluded.</p> <p>Since this is not the case Germany would like that number of members to be taken into account. A proposal 0-1500, 1501-5000, more than 5000 is forwarded.<br/>The reason is according to the German letter:<br/>The aim of this proposal is to encourage the willingness to form national umbrella organizations; a development that will greatly benefit the public image of our profession.<br/>The motion is put forward in the letter.</p> <p>The General Assembly in Brighton<br/>The Minutes was sent out 29 September 1998<br/>(see extract in enclosure 12)</p> <p>From the discussion in the General Assembly session two on Saturday 25 July 1998:<br/>The Bureau support the adoption of the Statutes and Internal Rules that was attached to the paper circulated earlier in the week (21 July 1998)</p> <p>A motion by France on one country one vote was defeated.<br/>The motion from Germany in the letter of 2 July 1998 of giving certain member organizations a second vote was removed.</p> <p>These few lines in the minutes concluded a long and arduous debate and it leaves behind an impression that the discussion had deserved more thorough minutes.</p> <p>In the Minutes is referred to FIG publication number 18<br/>See below</p> | <p><i>Invention of One vote per member organization making it possible to have more than one vote per Country</i></p> |
|  | <p>After the Congress in Brighton FIG publication number 18 , September 1998 was sent out.<br/>The chapter about the Governance of the Federation is stated below.</p> <p>6.1 The Federation is governed by its General Assembly of member associations which shall meet once each calendar year. The meetings of the General Assembly should be held at intervals of about 12 months but must be no closer than nine months apart, except in the case of an extraordinary meeting.</p> <p>6.2 Meetings of the General Assembly are presided over</p>   |   |

|  |  |  |
|--|--|--|
|  | <p>by the president of the Federation or, in his or her absence, by one of the vice presidents. A full agenda, with motions for each item to be put to the meeting, shall be sent out at least two months prior to each meeting and shall also be placed on the Federation's home page on the World Wide Web.</p> <p>6.3 The powers of the General Assembly are to amend the Statutes of the Federation</p> <ul style="list-style-type: none"><li>• to admit member associations and to appoint honorary presidents and honorary members</li><li>• to elect members and to confirm appointments to the Council and to approve the responsibilities delegated to each of its members</li><li>• to set levels of fees for the member associations</li><li>• to establish commissions, ad hoc commissions, permanent institutions and task forces and to elect chairs and vice chairs of the commissions and directors of the permanent institutions</li><li>• to adopt plans of work, budgets and audited statements of accounts</li><li>• to prescribe Internal Rules</li><li>• to expel member associations</li><li>• to do all such other matters as the Federation sees fit for the achievement and promotion of its objectives.</li></ul> <p>6.4 For a General Assembly to be constitutionally valid, there must be present at least one individual member of at least one third of the member associations. An individual member may represent only one member association.</p> <p>6.5 All decisions of the General Assembly shall be taken by simple majority vote. Only member associations which have paid their fees for the previous calendar year and have no other arrears and which are represented at the meeting by an individual member shall be entitled to vote. Each member association shall nominate an individual member who shall be authorized to cast that member association's vote at any meeting or extraordinary meeting of the General Assembly.</p> <p>6.6 The number of votes which may be cast by a member association is one.</p> <p>6.7 The vote shall be taken by a show of hands unless a ballot is ordered by the chairperson or requested and seconded from the floor. Elections should always be by ballot. In the case of an equality of votes the chairperson shall cast the deciding vote except in the case of elections to office where the final decision will be made by</p> |  |
|--|--|--|

|   |  |  |
|---|--|--|
|   | <p>selecting a name by blind ballot.</p> <p>6.8 The Council or one quarter of the member associations can demand the convening of an extraordinary meeting of the General Assembly. The period of notice, quorum and voting procedures for an extraordinary meeting shall be the same as those for the General Assembly.</p>   |  |
| 2000  | Amendments to the Statutes but not concerning the voting   |  |
| 24th FIG General Assembly, Seoul 2001         | <p>6.5 All decisions of the General Assembly shall be taken by simple majority vote. Only member associations which have paid their fees for the previous calendar year and have no other arrears and which are represented at the meeting by an individual member shall be entitled to vote. Each member association shall nominate an individual member who shall be authorized to cast that member association's vote at any meeting or extraordinary meeting of the General Assembly.</p> <p>6.6 The number of votes which may be cast by a member association is one.</p> <p>6.7 The vote shall be taken by a show of hands unless a ballot is ordered by the chairperson or requested and seconded from the floor. Elections should always be by ballot. In the case of an equality of votes the chairperson shall cast the deciding vote except in the case of elections to office where the final decision will be made by selecting a name by blind ballot.</p> <p>6.8 The Council or one quarter of the member associations can demand the convening of an extraordinary meeting of the General Assembly. The period of notice, quorum and voting procedures for an extraordinary meeting shall be the same as those for the General Assembly.</p> | <p>Complete set of Statutes, Internal rules e.t.c. adopted in Seoul</p> <p>6.6<br/>No change from 1998</p> |
| 30th General Assembly,                        | That the General Assembly adopts proposed changes to Statutes and Internal Rules and notes that a thorough revision of the Statutes, Internal Rules and other guidelines will be prepared for the General Assembly in 2008.  | Hong Kong SAR, China 2007  |
| 31st General Assembly, Stockholm, Sweden 2008 | 6.5 All decisions of the General Assembly shall be taken by simple majority vote. Only member associations which have paid their fees for the previous calendar year and have no other arrears except minor transaction costs and which are represented at the meeting by an individual member shall be entitled to vote.  | .  |



|         |   |                  |
|---------|---|------------------|
| Minutes | <p>Each member association shall notify the Director in writing of the name of their official representative or representatives at or prior to the General Assembly.</p> <p>Amendment proposed to make it clear that member associations must advise the Director of the name of their voting delegates in advance to the General Assembly</p>                                    |                  |
|         | 6.6 A member association may only cast one vote on each issue.  | 6.6<br>No change |
|         | 6.7 The vote shall be taken by a show of hands unless a ballot is ordered by the chairperson or requested and seconded from the floor. Elections shall always be by ballot. In the case of an equality of votes the chairperson shall cast the deciding vote except in the case of elections to office where the final decision will be made by selecting a name by blind ballot. |                  |

### Present statutes

STATUTES (Approved by the General Assembly on 11 May 2001, amendments to paragraphs 5.5 and 6.3.3 approved by the General Assembly 13 May 2007)

#### 6.0 GOVERNANCE OF THE FEDERATION

6.1 The Federation is governed by its General Assembly of member associations which shall meet once each calendar year. The meetings of the General Assembly should be held at intervals of about 12 months but must be no closer than nine months apart, except in the case of an extraordinary meeting.

6.2 Meetings of the General Assembly are presided over by the president of the Federation or, in his or her absence, by one of the vice presidents. A full agenda, with motions for each item to be put to the meeting, shall be sent out at least two months prior to each meeting and shall also be placed on the Federation's home page on the World Wide Web.

6.3 The powers of the General Assembly are

- 1) to amend the Statutes of the Federation
- 2) to admit member associations and to appoint honorary presidents and honorary members
- 3) to elect members and to confirm appointments to the Council (adopted by General Assembly 13 May 2007)
- 4) to set levels of fees for the member associations
- 5) to establish commissions, ad hoc commissions, permanent institutions and task forces and to elect chairs and vice chairs of the commissions and directors of the permanent institutions
- 6) to adopt plans of work, budgets and audited statements of accounts
- 7) to prescribe Internal Rules
- 8) to expel member associations

- 9) to do all such other matters as the Federation sees fit for the achievement and promotion of its objectives.

6.4 For a General Assembly to be constitutionally valid, there must be present at least one individual member of at least one third of the member associations. An individual member may represent only one member association.

6.5 All decisions of the General Assembly shall be taken by simple majority vote. Only member associations which have paid their fees for the previous calendar year and have no other arrears and which are represented at the meeting by an individual member shall be entitled to vote. Each member association shall nominate an individual member who shall be authorised to cast that member association's vote at any meeting or extraordinary meeting of the General Assembly.

**6.6 The number of votes which may be cast by a member association is one.**

6.7 The vote shall be taken by a show of hands unless a ballot is ordered by the chairperson or requested and seconded from the floor. Elections should always be by ballot. In the case of an equality of votes the chairperson shall cast the deciding vote except in the case of elections to office where the final decision will be made by selecting a name by blind ballot.

6.8 The Council or one quarter of the member associations can demand the convening of an extraordinary meeting of the General Assembly. The period of notice, quorum and voting procedures for an extraordinary meeting shall be the same as those for the General Assembly.

**2-B Summary about the Statutes**

FIG moved from one country one vote in 1998 on basis of a discussion held during 1997 and 1998. The various views are expressed above showing different views on one country-one vote of one vote per association. The proposal about additional votes was rejected although presented by the Bureau.

Since 1998 FIG has developed significantly. The number of members has grown from 53 countries in 1987 to more than 100 member organizations and 90 member countries. FIG has become truly worldwide covering Africa and Asia and South America. The fee system supports the membership from low-income countries.

The tendency to enhance the political power in many countries reduces the number of organizations often to one umbrella organization for all surveyors in the Country. In new member countries it is seen that it takes time to coordinate and combine the effort of different organizations to one. The present number of countries having more than one member organization is 16. See page 18

**2C Voting about?**

According to the present statutes FIG general Assembly:

In former times the most important decision was the venue for the next Conference.

Not only due to the place but to the fact that this decision also determined the Board and the President for the coming election period of 4 years.

6.3 The powers of the General Assembly are

1. to amend the Statutes of the Federation
2. to admit member associations and to appoint honorary presidents and honorary members
3. to elect members and to confirm appointments to the Council (adopted by General Assembly 13 May 2007)
4. to set levels of fees for the member associations
5. to establish commissions, ad hoc commissions, permanent institutions and task forces and to elect chairs and vice chairs of the commissions and directors of the permanent institutions
6. to adopt plans of work, budgets and audited statements of accounts
7. to prescribe Internal Rules
8. to ex Pel member associations
9. to do all such other matters as the Federation sees fit for the achievement and promotion of its objectives.

In the Internal Rules it is stated that:

2.5 An association wishing to become a member of the Federation shall make an application to the Council which will consider it and submit it to a vote of the General Assembly.

7.1 Nominations for these appointments shall be made by a member association or the Council which will consider them and submit them to a vote of the General Assembly

9.1 The president is elected by the General Assembly in the year of a Congress

9.2 The four vice presidents are elected by the General Assembly

10.2 Changes to levels of fees set by the General Assembly must be approved by the General Assembly

11.8 The appointment of chair-elect shall be decided by a vote of the General Assembly

13.1 In addition to the commissions, ad hoc commissions may be established by a vote of the General Assembly to carry out special technical assignments, projects or studies

15.1 The establishment of a permanent institution shall be decided by a vote of the General Assembly

17.2 A member association or associations wishing to host a congress or a working week in its country shall make a submission, accompanied by an outline budget, to the Council and the venue shall be selected five years in advance on a vote of the General Assembly.

There are two main issues of voting

- 1) Election
- 2) Decision about venues

The question about membership is not considered to be vital since it is based on application and recommendation from the Board.

The election system is based on the commission system and requires a lot of preparation. The application must be given in advance – may be too long – but the system itself seems to work. It might be appropriate to work through the system in order to make it work more easily and require a shorter preparation from the members.

The decision about the venues is based on applications from the interested member Countries. The venues are of vital importance for the FIG Economy. The venues must to reflect the fact that FIG is a global organization. It must also take in consideration

that the cost is of important to the members and that the cost of participation has been subject for criticism in the last 20 Years.

The Working Group on voting rights recommends that the procedure and decision about the venues is transferred from the General Assembly to the Board due to the amount of economical and logistical issues to be handled and to ensure that the Venues are spread evenly amongst the continents.

## **2 D Voting rights in other organizations**

**CLGE** CLGE – The Council of European Geodetic Surveyors has 35 members including all European Union countries. It has grown significantly from a humble start in 1972. Only one membership per country is permitted and each country may be represented by a maximum of two delegates, one of them being the head of delegation in the General Assembly.

### **Voting**

The General Assembly consists of all the active members. They are represented by at least one person, two representatives being the maximum. The national associations have to designate their representatives. The active members have one effective vote per country.

The Fee system as presented in 2010 by the Treasurer:

The fees will be based on the GDP (Gross Domestic Product) of each member country plus a lump sum (The aim of this lump sum, as it is already the case, is because each country has the same voting right in the general assembly and it is normal to have a minimal fee for that). The advantages of the new system are multiple because it:

- Is independent of the self-declaration
- Introduces a real equality between all the members
- Takes account of the economic power of our members
- Is automatically updated to the cost of the life (See decisions taken in Prague)
- Moreover, it remains conform to the decision taken in Prague
- Permits to calculate easily the fees for a candidate
- Is simple to compute and also (I expect it) simple to explain
- As the number of surveyors in a country will no more influence the amount of the Contribution to the CLGE, we hope that every member will declare the number of all Surveyors and so CLGE will be able to prove that it represents may be 40.000 Surveyors or more, and that's more conform to the reality.

Membership fees paid by Principal Members are calculated from a fixed administrative charge plus a proportional charge per geodetic surveyor as defined in the current publication of the Profile Report.

### **Summing up**

- One-country-one vote
- A fee system based on a price level defined outside CLGE and related to the Gross National Product

## **International Association of Geodesy IAG**

5.1 The MEMBERSHIP of the IAG shall comprise of countries and individuals. Any member country of the IUGG shall be regarded as a National Member of the IAG and may, through its adhering body, appoint a National Delegate to the Association. National Delegates represent their countries in IAG Council meetings and act as correspondents for their countries between General Assemblies.

5.3 Responsibility for the direction of the Association affairs shall be vested in the COUNCIL. Decisions of the Council shall be reported to the General Assembly. In the case that the majority of those present at a General Assembly meeting disagree with the decisions of the Council, the Council shall reconsider the question, and make a decision, which shall be final.

5.3.1 The COUNCIL CONSISTS of the National Delegates, formally accredited by the adhering body of the member countries, on the basis of one delegate per country. The delegates must have participated in IAG activities. The President of the Association shall preside over the Council meetings, without vote, except in the case of a tie as provided in Article 5.3.2 f) hereafter.

5.3.2. c) On questions not involving matters of finance, the voting in Council shall be by member countries, each having one vote,

Summing up

- one country-one vote
- In financial matters a differential system is applied.

#### IVSC - INTERNATIONAL VALUATION STANDARDS COUNCIL

Membership of IVSC is open to users, providers, professional institutes, educators and regulators of valuation services

The International Valuation Standards Council (IVSC) is an independent body that sets global standards for valuation, especially those that will be relied upon by investors and other third party stakeholders. It also promotes the development of the valuation profession around the world and collaborates and cooperates with other organizations concerned with standards and regulation in the financial markets.

#### 4. Membership 54

Membership in the IVSC shall consist of: 55

Valuation Professional Organizations – which shall include valuation professional organizations 56 recognized either by legal decree or general consensus;

#### Voting 131

Each Member shall be entitled to vote upon each matter submitted to a vote at a meeting of the 132 Members. At all meetings of Members, a Member may vote in person through its Delegate or 133 by proxy executed in writing by the Member or by his or her duly authorized attorney in fact. 134 All proxy's must be given to the Executive Director at least fourteen days prior to the meeting 135 of the Members.

Summing up

- IVSC consist of organizations rather than countries.

### 3 FIG figures and numbers November 2011

#### 3 A Number of votes in FIG

The list includes 90 Countries having 106 members associations

| Country             | 1 vote | 2 votes | 3 votes |
|---------------------|--------|---------|---------|
| Albania             |        | x       |         |
| Bulgaria            |        | x       |         |
| China               |        | x       |         |
| Cyprus              |        | x       |         |
| Czech Republic      |        | x       |         |
| Finland             |        | x       |         |
| France              |        | x       |         |
| Greece              |        | x       |         |
| Hong Kong           |        | x       |         |
| Ireland             |        | x       |         |
| Lithuania           |        | x       |         |
| Nigeria             |        |         | x       |
| Romania             |        | x       |         |
| Slovakia            |        | x       |         |
| United Kingdom      |        | x       |         |
| USA                 |        | x       |         |
| 90 member countries | x      |         |         |
| In total            | 90     | 15      | 1       |
|                     | 90     |         |         |
|                     | 30     | 15      |         |
|                     | 3      | 1       |         |
|                     | 123    | 16      |         |

Remarks: Out of 123 votes 16 countries have 33 votes or 26,8 % of the voting power.

#### 3B The present FIG Fee system

List of fees. The list is based on figures from November 2011 and includes 106 members

| Interval Euro | Number of members | total | Percentage of total member fee |
|---------------|-------------------|-------|--------------------------------|
| 0-500         | 39                |       |                                |
| 501-1000      | 14                | 53    |                                |
| 1001-1500     | 8                 | 61    |                                |
| 1501-2000     | 9                 | 70    | 14,4                           |
| 2001-2500     | 7                 | 77    |                                |
| 2501-3000     | 6                 | 83    |                                |
| 3001-4000     | 4                 | 87    |                                |

|             |   |     |      |
|-------------|---|-----|------|
| 4001-5000   | 3 | 90  | 34,4 |
| 5001-10000  | 8 | 98  | 52   |
| 10001-20000 | 5 | 103 |      |
| 20001-      | 3 | 106 | 100  |

Remarks:

50% of the members are paying less than 1000 Euro per Year  
 2/3 are paying less than 2000 Euro per year  
 70 members (66 %) are paying 14,4 % of the total member fee  
 8 members are paying 48 % of the total member fee

Fees in Euro summing up the intervals

|                                      |            |      |
|--------------------------------------|------------|------|
| Interval 0-500                       | 8.577,45   |      |
| Interval 501-1000                    | 9.195,55   |      |
| Interval 1001-1500                   | 9.133,20   |      |
| Interval 1501-2000                   | 15.243,50  |      |
| Interval 2001-2500                   | 15.243,50  |      |
| Interval 2501-3000                   | 16.013,20  |      |
| Interval 3001-4000                   | 14.116,90  |      |
| Interval 4001-5000                   | 13.076,30  |      |
| Interval 5001-10000                  | 50.778,70  |      |
| Interval 10001-20000                 | 70.234,20  |      |
| Interval 20001 -                     | 70.950,00  |      |
| Total                                | 292.562,5  |      |
| Interval 0-2000 70 countries         | 42.149,70  | 0,14 |
| Interval 0-5000 90 countries         | 100.599,60 | 0,34 |
| Interval 0-10000 98 countries        | 151.378,30 | 0,52 |
| Interval more than 10000 8 countries | 141.184,20 | 0,48 |

| Interval Number of Surveyors | Number of members | Accumulated | Percentage in group | Percentage in total | Approximately In Euro Maximum in the group |
|------------------------------|-------------------|-------------|---------------------|---------------------|--|
| 0-99                         | 29                |             | 27,3                | 27,3                | 210  |
| 100-249                      | 20                | 49          | 18,9                | 46,2                | 1000                                       |
| 250-499                      | 20                | 69          | 18,9                | 65,1                | 2000                                       |
| 500-749                      | 13                | 82          | 12,3                | 77,4                | 3500                                       |
| 750-999                      | 3                 | 85          | 2,8                 | 80,2                | 4300                                       |
| 1000-1499                    | 10                | 95          | 9,4                 | 89,6                | 6500                                       |
| 1500-2499                    | 4                 | 99          | 3,8                 | 93,4                | 11000                                      |
| 2500-3499                    | 2                 | 101         | 1,9                 | 95,3                | 15000                                      |
| 3500-                        | 5                 | 106         | 4,7                 | 100                 | More 15000 *                               |
|                              | 106               |             | 100                 |                     |  |

- China is for the moment half price.

46 % of the members are paying 1000 Euro or less  
65 % of the members are paying 2000 Euro or less  
71 members or 67 % are paying less than 2200 Euro

### 3c The fee system approved in 2009

In the FIG WW in Israel 2009 (se enclosure 13) the fees for 2009 and 2010 was determined. FIG also proposed two structural changes to the fee system as seen below.

The World Bank lists of the low-income economies and the lower-middle-income economies are available at the [World Bank web site](#).

On consideration of the table above, and in light of comments by a number of (small and large) member associations, the Council proposes two structural changes:

1. To fix the sliding maximum scale for subscriptions at 5,500 members from 2010;
2. To reduce the minimum number of members used in calculating the subscription to 20, and the minimum annual subscription to €50 (whichever of the two figures is the greater). This is to address particular concerns raised by some African countries.

And for 2010 and 2011 the proposal was:

|      | <b>Per capita fee</b>   | <b>Minimum fee</b>                        | <b>Maximum fee</b>       |
|------|---|---|--------------------------|
| 2010 | 4.18 € per member up to a maximum of 5,500 members.<br>Member associations from countries listed by the World Bank as low-income economies or lower-middle-income economies shall pay 2.09 € per member up to a maximum of 5,500 members. | 20 members or 50 € (whichever is greater) | 5,500 members (22,290 €) |
| 2011 | 4.30 € per member up to a maximum of 5,500 members<br>Member associations from countries listed by the World Bank as low-income economies or lower-middle-income economies shall pay 2.15 € member up to a                                | 20 members or 50 € (whichever is greater) | 5,500 members (23,650 €) |



maximum of 5,500  
members.

---

The proposal was adopted by the general assembly and is therefore the valid fee principle.

#### **4 Discussion about the Voting System**

The majority of the votes are held by nations having one vote. Only 16 countries have more than one vote. One country one vote is therefore the dominant system in FIG.

Although the task of the WG is not the fee system - that was votes about in Israel in 2009 - it is obvious that it is necessary to know about the fees too.

90 member Countries pays approx. 1/3 of the fee in total. Look at the numbers on Chapter 3

##### **4A One Country One vote**

The original intention inside FIG was kept for 120 Years and for many countries it still represent the best solutions since it encourages the member organizations to have a close dialog about their representation.

It is also stated that a common representation is beneficiary to a stronger position politically in the Country.

This system is easy to handle during the GA's.

##### **4B One Organization One Vote**

It allows emerging organizations to establish themselves individually and more clearly demonstrate the outcome of the fee spent in FIG.

Since there is no lower limit for the size of the organization it can provide even very small organizations with voting power and thereby create a misbalance amongst the countries.

Proposals to compensate this by the number of members were defeated in Brighton 1998.

The system is rather easy to handle during the GA's

##### **4C Differential voting approach**

The development of FIG has created a big gap between the member countries related to number of Surveyors in the Countries but also to the fee paid by them.

If this gap becomes too visible it can harm the development of FIG. The debate and the elections in Marrakech demonstrated that this is not merely theory.

A system of tied or weighted votes is a bit more complex to handle but if ballots on only one votes are distributed then associations with more than one vote will become the number of ballots they are entitled to.

## **5. The Challenge**

The challenge is to create a system:

- That encourages countries to become members
- That encourages associations to become members and to cooperate
- That provides a good background for the necessary elections
- That enhances the good relations amongst the FIG members
- That gives value for money
- That maintains a decent level of influence for everybody.

It can be related to

- The number of Surveyors
- The fee paid
- The number of organizations

e.t.c.

A fair system will be supportive for the politically appointed members of the Board and Commissions and this is very vital for the influence of the Surveyor in the Society.

In contradiction to the situation in 1998 the discussion was fully open in Marrakech 2011 and due to the election outcome in Sydney many members are aware of the need for a common solution.

## **6. Proposals and recommendations**

**The conclusions concerning the voting system is not in this Chapter but is mentioned in the Paper from Chair Brian Coutts.**

### **6.1 Venues for the Working Weeks, Regional Conferences and Congresses.**

The decisions concerning the venues should either be taken by the Council or by the GA based on a proposal from the Council

Motivation

These events are very important for the FIG economy. The hosting countries must demonstrate the necessary logistical capacity. And the Corporate members could be involved in the process in cooperation with the Board.

It is also important that the events are spread amongst the members to secure that all parts of the world are covered.

The council must be able to call for Criteria's to be fulfilled by the hosting Country and to have sanctions if these criteria's are not fulfilled.

## **6.2 When to vote**

**The voting part of the GA should take place in the period Monday- Wednesday.**

### Motivation

It has been demonstrated that approximately 50% of the members are present during the GA. The GA is divided in two parts. Part one is on Sunday and part two on the last day. The congress is in between.

For many countries the cost by taking part in the GA is by far exceeding the membership fee and cost at least two extra days expenditure. Probably therefore many members abstain from the GA.

## **6.3 Voting**

It has been a political decision in FIG to invite as many members as possible. One of the consequences is that even in small countries it is possible to enter FIG with more than one association.

This policy – confirmed in Brighton in 1998 – has led to enhancement of FIG to more than 100 members.

The principle that each association has one vote remains.

Many countries have put a great effort in merging the associations in their Countries in order to improve the political influence of the Surveying profession. Consequently the number of votes related to FIG is reduced.

These two goals for FIG

1. Entering of as many member associations as possible
2. Promoting the political influence of the surveying profession by merging local associations

should be reflected in the voting system.

Appendix 1

FIG Working Group on Voting Rights  
Member list

|    | Name                 | Country            | E-mail   |
|----|----------------------|--------------------|--|
| 1  | Axel Annaert         | Belgium            | <a href="mailto:Axel.annaert@hzs.be">Axel.annaert@hzs.be</a>                       |
| 2  | George McFarlane     | Canada             | <a href="mailto:Geomac66@sympatico.ca">Geomac66@sympatico.ca</a>                   |
| 3  | Henning Elmstroem    | Denmark            | <a href="mailto:elmstroem@plf.dk">elmstroem@plf.dk</a>                             |
| 4  | Karl-Friedrich Thöne | Germany            | <a href="mailto:karl-friedrich.thoene@dvw.de">karl-friedrich.thoene@dvw.de</a>     |
| 5  | Edward SH Au         | Hong Kong<br>China | <a href="mailto:edwardaush@hotmail.com">edwardaush@hotmail.com</a>                 |
| 6  | Brendan Arrigan      | Ireland            | <a href="mailto:brendanarrigan@gmail.com">brendanarrigan@gmail.com</a>             |
| 7  | Fausto Savoldi       | Italy              | <a href="mailto:pressavoldi@cng.it">pressavoldi@cng.it</a>                         |
| 8  | Collins Kowour       | Kenya              | <a href="mailto:Collins.kowour@gmail.com">Collins.kowour@gmail.com</a>             |
| 9  | Saade Yaacoub        | Lebanon            | <a href="mailto:comandoo1@yahoo.com">comandoo1@yahoo.com</a>                       |
| 10 | Kees de Zeeuw        | The Netherlands    | <a href="mailto:Kees.dezeeuw@kadaster.nl">Kees.dezeeuw@kadaster.nl</a>             |
| 11 | Brian Coutts         | New Zealand        | <a href="mailto:Brian.coutts@otago.ac.nz">Brian.coutts@otago.ac.nz</a>             |
| 12 | Steven Nystrom       | USA                | <a href="mailto:Nystrom@newstreamcompanies.com">Nystrom@newstreamcompanies.com</a> |
|    |                      |                    |  |

## Appendix 4

## FIG member situation

| Year | Members | Countries | Comments                              | Affiliates | Academics |
|------|---------|-----------|---------------------------------------|------------|-----------|
| 1878 | 7       | 7         |                                       |            |           |
| 1926 | 23      | 23        |                                       |            |           |
| 1927 | 12      |           |                                       |            |           |
| 1928 | 13      |           |                                       |            |           |
| 1930 | 14      |           |                                       |            |           |
| 1933 | 15      |           |                                       |            |           |
| 1935 | 16      |           |                                       |            |           |
| 1949 | 17      |           |                                       |            |           |
| 1953 | 18      |           |                                       |            |           |
| 1956 | 19      |           |                                       |            |           |
| 1958 | 21      |           |                                       |            |           |
| 1959 | 22      |           |                                       |            |           |
| 1960 | 24      |           |                                       |            |           |
| 1961 | 26      |           |                                       |            |           |
| 1963 | 27      |           |                                       |            |           |
| 1965 | 29      | 26        |                                       |            |           |
| 1967 | 33      |           |                                       |            |           |
| 1968 | 37      | 34        |                                       | 28         |           |
| 1969 | 39      |           |                                       |            |           |
| 1970 | 41      |           |                                       |            |           |
| 1971 | 42      |           |                                       |            |           |
| 1973 | 44      |           |                                       |            |           |
| 1974 | 46      | 44        |                                       |            |           |
| 1975 | 47      |           |                                       |            |           |
| 1976 | 49      |           |                                       |            |           |
| 1987 | 57      | 53        | Correspondents<br>in 8 more Countries | 61         |           |
| 1998 |         |           |                                       |            |           |
| 1999 | 76      | 66        |                                       | 4          |           |
| 2000 | 79      | 68        |                                       | 5          | 28        |
| 2002 |         |           |                                       |            |           |
| 2004 |         |           |                                       |            |           |
| 2005 | 94      | 84        |                                       | 14         | 81        |
| 2006 | 98      | 87        |                                       | 17         | 84        |
| 2007 | 99      | 85        |                                       | 21         | 86        |
| 2008 | 99      | 84        |                                       | 28         | 86        |
| 2009 | 103     | 87        |                                       | 32         | 89        |
| 2010 | 103     | 87        |                                       | 39         | 91        |
| 2011 | 106     | 90        |                                       | 41         | 93        |



Kalvebod Brygge 31-33  
DK-1780 Copenhagen V  
DENMARK  
tel. + 45 3886 1081  
fax + 45 3886 0252  
e-mail: fig@fig.net  
web-site: www.fig.net

30<sup>th</sup> May, 2011

President:

Union Belge des Géomètres-Experts Immobiliers, Belgium  
Canadian Institute of Geomatics, Canada  
Den danske Landinspektørforening, Denmark  
Deutscher Verein für Vermessungswesen, Germany  
The Hong Kong Institute of Surveyors, Hong Kong SAR China  
The Irish Institution of Surveyors, Ireland  
Consiglio Nazionale Geometri e Geometri Laureati, Italy  
Institution of Surveyors of Kenya, Kenya  
Ordre des Géomètres-Topographe du Liban, Lebanon  
Geo-Information Netherlands, The Netherlands  
New Zealand Institute of Surveyors, New Zealand  
South African Council for Professional and Technical Surveyors, South Africa  
The Appraisal Institute, United States of America

Dear Presidents,

#### **Membership Issue: Voting Rights**

The 34<sup>th</sup> FIG General Assembly engaged in robust discussions on the issue of members' voting rights with the following outcomes, by consensus:

- that the discussion on this issue must continue; and
- that a working group be formed from amongst members present to consider the issue and bring forward a discussion paper to the 2012 General Assembly in Rome.


This Working Group comprises nominees of member associations from Belgium, Canada, Denmark, Germany, Hong Kong SAR China (HKIS), Ireland (IIS), Italy, Kenya, Lebanon, Netherlands, New Zealand, South Africa and USA (AI). The 13-member group will, as agreed by the General Assembly, select a chair from amongst themselves to progress its work and bring forth the discussion paper to the 2012 General Assembly.

Vice President Iain Greenway (email: iain.greenway@btinternet.com) has been tasked to facilitate the process of constituting this 13-member Working Group that will comprise a nominee from each of your organizations and then to facilitate the selection of the Chair from amongst nominated members of this Working Group. Thereafter, VP Greenway will disengage himself from the Working Group. It would be greatly appreciated if you could co-operate with VP Greenway by providing him the name and contact details of your association's nominee for the Working Group, so that the Working Group can be constituted and a Chair selected.

I look forward to your assistance so that the Working Group can have an early start to the task before them.

Thank you.

Yours sincerely,  
**International Federation of Surveyors**



CheeHai Teo  
President

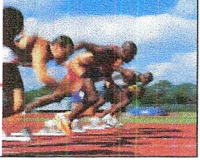
Attachments:

1. Handouts of the Presentation by Council to the General Assembly on Membership Issue (Voting Rights)
2. Handouts of the Presentation of the Summary from the Breakout Session on Membership Issue (Voting Rights)

**FIG** Fédération Internationale des Géomètres  
 International Federation of Surveyors  
 Internationale Vereinigung der Vermessungsingenieure

---

**34<sup>th</sup> FIG General Assembly:  
 Agenda Item 22: Membership Issues (Voting Rights)**



---

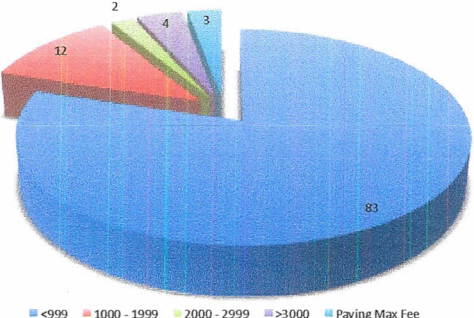
**CheeHai TEO**  
 President  
 chteo.surveyor@gmail.com

**FIG** Fédération Internationale des Géomètres  
 International Federation of Surveyors  
 Internationale Vereinigung der Vermessungsingenieure

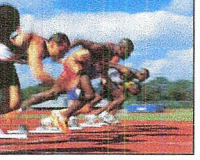
---

After the 2010 General Assembly, the profile of association membership within FIG is as follows -

- 23 – 999 Members
  - 83 Member Associations
- 1000 – 1999 Members
  - 12 Member Associations
- 2000 – 2999 Members
  - 2 Member Associations
- > 3000 Members
  - 4 Member Associations
- Paying maximum fee
  - 3 Member Associations



Legend: <999 (blue), 1000 - 1999 (red), 2000 - 2999 (green), >3000 (purple), Paying Max Fee (light blue)



---

**CheeHai TEO**  
 President  
 chteo.surveyor@gmail.com



FIG intends to grow its membership and many of these new member associations may invariably be small in size; the profession in some of these countries may be fragmented, represented by a number of national associations. In addition, we may be seeing a consolidation or merger of a number of national associations, usually from more established jurisdictions, and this too must be encouraged.

This proposal to review the voting rights of member associations is timely, the CORE issue is the FUTURE of FIG and in line with the recognition that FIG must keep pace with the times.

*"As new discoveries are made, new truths discovered, and manners and opinions change with the change of circumstances, institutions must advance also to keep pace with the times"*  
(Thomas Jefferson)

CheeHai TEO  
President  
chteo.surveyor@gmail.com



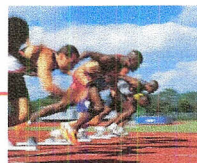
**An Idea:**

**1: 2: 3 System for member associations -**

- 1 vote for Member Association with membership of less than 2000 members;
- 2 votes for Member Association with membership of 2000 members or more; and
- 3 votes for Member Association paying the maximum level of membership fees.

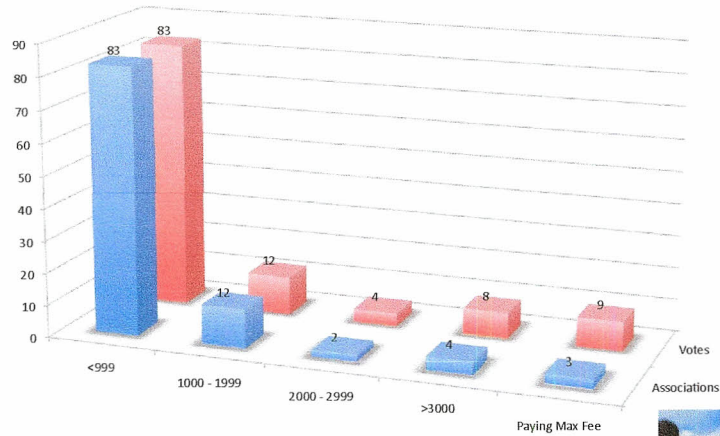
**with a vote for Platinum Corporate Members on Working Week or Congress Venue**

CheeHai TEO  
President  
chteo.surveyor@gmail.com





Fédération Internationale des Géomètres  
International Federation of Surveyors  
Internationale Vereinigung der Vermessungsingenieure

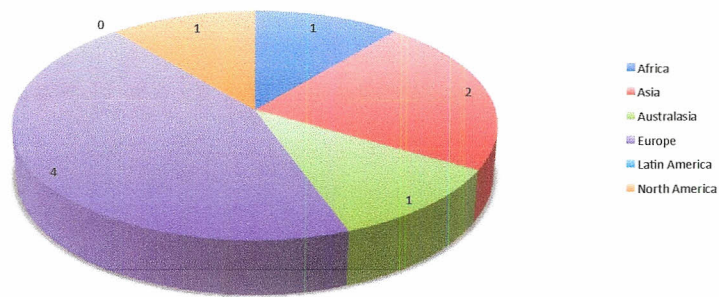


Number of Associations that will "benefit" from the idea

CheeHai TEO  
President  
chteo.surveyor@gmail.com

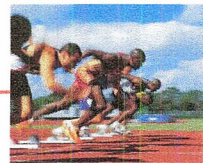


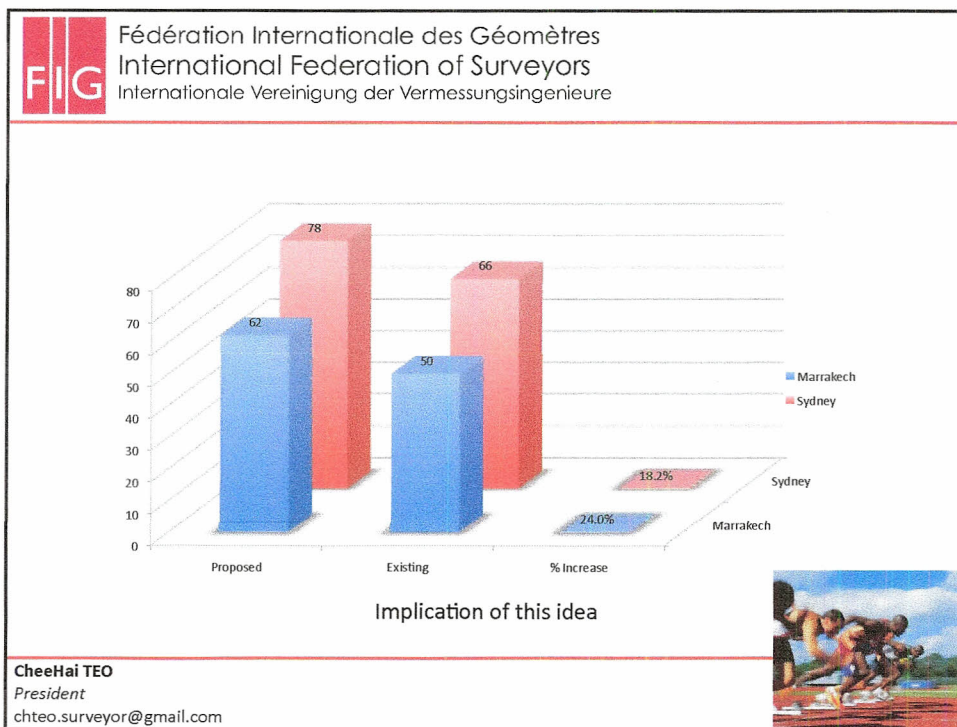
Fédération Internationale des Géomètres  
International Federation of Surveyors  
Internationale Vereinigung der Vermessungsingenieure



Beneficiary of Additional Votes by Regions

CheeHai TEO  
President  
chteo.surveyor@gmail.com





**FIG** Fédération Internationale des Géomètres  
International Federation of Surveyors  
Internationale Vereinigung der Vermessungsingenieure

**BREAKOUT SESSION ON MEMBERSHIP ISSUES (VOTING RIGHTS)**  
FRIDAY  
11:00 – 12:30, 20<sup>th</sup> MAY, 2011

**CheeHai TEO**  
President  
chteo.surveyor@gmail.com



Fédération Internationale des Géomètres  
International Federation of Surveyors  
Internationale Vereinigung der Vermessungsingenieure

## ***Agenda Item 30: Membership Issues (Voting Rights)***

Report back from Break Out Session (20 May 2011)

Iain Greenway  
Vice President



Fédération Internationale des Géomètres  
International Federation of Surveyors  
Internationale Vereinigung der Vermessungsingenieure

- Break out attended by 16 Member Associations
- Good, open discussion on the issues
- Key points made grouped on the next slides
- Then consideration of the way forward





Fédération Internationale des Géomètres  
International Federation of Surveyors  
Internationale Vereinigung der Vermessungsingenieure

## Structural issues

- The structure of associations in each country is a matter of law and history
- This structure determines how many members from each country, and therefore votes
- Some current associations could split, with several FIG members emerging
- Do we want a unified profession?
- We also now have regional/ language associations etc



Fédération Internationale des Géomètres  
International Federation of Surveyors  
Internationale Vereinigung der Vermessungsingenieure

## Do we need to change?

- Is this the best system yet devised?
- If it isn't broken, do we need to fix it?
- Is this a natural task following the governance changes over recent years?
- How can we decouple fees from votes?
- How important are voting rights – is it more important to belong and share in the work of FIG?
- Decide these things first: do we need to change?



Fédération Internationale des Géomètres  
International Federation of Surveyors  
Internationale Vereinigung der Vermessungsingenieure

## The consequences of change

- Smaller associations would have their rights watered down – leaders and followers?
- FIG budget includes support for poor associations – but change would reduce their rights
- Or does a change recognise the amount of funding larger MAs provide to FIG?
- How often would we need to review – or agree to fix for say 5 years?



Fédération Internationale des Géomètres  
International Federation of Surveyors  
Internationale Vereinigung der Vermessungsingenieure

## Possible models

- Keep system simple eg. 1/2/3; 1/3/5
- Linked to number of surveyors with maximum, say 5 votes
- Break points will be fairly arbitrary
- Consider the 'average' GA with around 50 MAs attending, including most of the large ones
- Base it on FIG being a Federation of Member Associations



## Other members

- Should Corporate Members have a vote?
- Any changes need to be tightly linked to the vision of FIG
- Perhaps a collective say for Platinum Corporate Members, not an individual say?



## Conclusion

- There are different views
- It needs more time and investigation to resolve this matter



Fédération Internationale des Géomètres  
International Federation of Surveyors  
Internationale Vereinigung der Vermessungsingenieure

### The way forward

- We need to continue the discussion and decide on the issues
- We need to be thorough but keep to a reasonable timetable
- The breakout suggested that a Task Force be convened to progress the issue
- Other possibilities include for Council to progress the matter
- Council will be guided by the GA



# INTERNATIONAL FEDERATION OF SURVEYORS

## MINUTES

of the meetings of the 64<sup>th</sup> Permanent committee, held at the Westin Stamford and Westin Plaza, Singapore on 12 and 15 May 1997

### **First session, Monday 12 May, 09.00 - 11.30**

#### 1. OPENING PROCEEDINGS

In formally opening the meeting, President Peter Dale welcomed all participants, invited Secretary-General Roy Swanston to take the roll call (a list of those present at both sessions of the PC is attached at Appendix A) and sought the PC's agreement to the appointment of Messrs Klimes and Oshima as tellers for the duration of the meeting.

#### 2. ADOPTION OF THE AGENDA

The PC adopted the previously circulated agenda, subject to revised timings for both sessions; the inclusion of additional items 15A and 15B (on FIG's marketing strategy and the permanent office) at the end of the first session; a revised paper on the permanent office being circulated on 13 May; and the inclusion of an additional item 25A (on plans for increasing support for the commissions) in the second session.

#### 3. MINUTES

The PC adopted the minutes of the 63<sup>rd</sup> meeting held in Buenos Aires in April 1996.

#### 4. MEMBERSHIP MATTERS (FIG(PC)P(97)1 - tabled)

The PC accepted an application for membership from the Belarus Land Reform Association.

The PC agreed that the membership of the Nigerian Institute of Surveyors should cease unless a substantial part of its arrears of subscription was received by 30 June 1997.

On an oral report from Vice-President Grahame Lindsay on his recent visit to Manila, the PC noted that the original application from the Geodetic Engineers of the Philippines had been made without the knowledge of its executive board, which had thus been unaware of its obligations to make annual subscription payments; and that, having received full details about FIG membership (including the obligations of membership), the association was likely to submit a revised application. The PC agreed that the association should continue to be shown as a member on condition that its new application for membership were received by 30 June 1997 and that, if it were not, the Bureau should reconsider the matter.

#### 5. NOMINATION AS HONORARY MEMBER (FIG(PC)P(97)2)

The PC endorsed with acclamation the proposal the John Curdie be appointed an Honorary Member.

The President congratulated the PC in coming to a decision which represented both an historical and momentous development for FIG. In accepting the congratulations of the PC, and particularly those of the unsuccessful candidates, Stig Enemark, on behalf of the Danish delegation, welcomed the permanent office to Copenhagen, assured the PC of his association's co-operation with all Bureaux and guaranteed an independent and extremely professional permanent office which would provide FIG with excellent value for money.

26. PLANS FOR INCREASING SUPPORT FOR THE COMMISSIONS

Jim Plasker spoke to that part of the US shadow Bureau statement on the permanent office which proposed giving more support to the commissions and invited the views of the PC. The meeting was reminded by Vice-President Grahame Lindsay that an efficient administration was the most important key for unlocking project (ie commission) finance from outside bodies, including international agencies; and by Ian Williamson of ACCO's recommendation that the Bureau investigate methods of generating revenue (for the commissions) from future FIG congresses and working weeks.

The PC noted that the US shadow Bureau would bring forward a paper for substantive debate in 1998.

27. SUBSCRIPTIONS STRUCTURE (FIG(PC)P(97)16)

In the light of comments made at the break-out session on constitution and finance and with the support of the Bureau, Treasurer Michael Rainbird invited comments from the PC on the concept of a sliding scale of subscriptions, based on the total number of members and to be introduced, with transitional arrangements for the larger member associations, over a period of 10 years (see Appendix B). The PC noted that the concept included retention of a minimum subscription; the French delegation's preference for a single capitation fee; and the American and UK delegations' concern that placing too great a burden on the largest member associations could cause them to restructure or even to leave FIG.

The PC agreed that the Treasurer's proposals should be developed by the task force on subscriptions structure and that it should submit firm recommendations for debate in 1998.

28. RATES OF SUBSCRIPTION, 1999

The PC endorsed the recommendation of the Bureau that, under Article 53(b) of the Statutes, the capitation fee for 1999 should be Sw.frs 4.50 which, together with the fixed fee, would give a total subscription of Sw.frs 4.75 per member of each member association.

29. REVIEW OF COMMISSION STRUCTURE (FIG(PC)P(97)20)

The PC recalled that, under minute 24 above, it had agreed that this would be taken forward at the forthcoming meeting of commission officers with representatives of the current and shadow Bureaux.

30. STATUTES AND INTERNAL RULES (FIG(PC)P(97)21)

In introducing the paper Vice-President Grahame Lindsay sought the guidance of the PC, to assist with the preparation of a final and potentially acceptable draft for which approval would be sought in 1998.



The PC debated and expressed itself broadly in favour of the recommendation that any association that met the criteria for admission as a member association should be able to join FIG, noting that this would not preclude the creation, in countries that so wished, of umbrella societies.

The PC endorsed the recommendation that a new category of affiliate membership should be introduced.

The PC endorsed the recommendation that all decisions of the General Assembly should be taken by simple majority vote.

The PC debated the alternatives of votes being cast by member association or by country and voted by a substantial majority in favour of the latter.

The PC debated the alternatives of each vote being of equal value or of a weighted voting. Sixteen delegations (mainly from the smaller member associations) were in favour of each vote having equal value and nine delegations expressed a preference for weighted voting.

The PC debated the suggestion that the new statutes/internal rules should make it possible to separate responsibility for hosting the congress from the responsibility for hosting the Bureau; but expressed itself strongly in favour of retaining the status quo.

The PC noted that, for the time being, the present terms of office and methods of appointment of commission officers and the title "technical commission" would be retained.

### 31. CLOSING PROCEDURES

In presenting Certificates of Appreciation to Professor Lim Lan Yuan, chairman of the local organising committee, Diane Chai, chief executive of the Singapore Institute of Surveyors and Valuers, and John Chua, general manager of Orient Explorer (S) Pte Ltd (the professional conference organiser) the President thanked them and all their colleagues for their superb organisation and congratulated them on the success of the 1997 working week. Professor Lim passed the FIG banner over to FIG'98 congress director John Leonard and the President formally closed the 64<sup>th</sup> Permanent Committee meeting.

22 April 1998

To: FIG member associations  
cc: Commission officers  
Permanent institutions  
Correspondents  
Sponsors

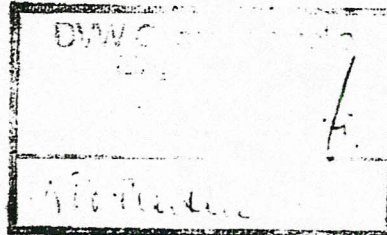


FIG Bureau 1996-1999  
12 Great George Street  
London SW1P 3AD

Tel: +44 (0)171-334 3796  
Fax: +44 (0)171-334 3719  
e-mail: figjw@rics.co.uk

*Handwritten notes:*  
1. to Mrs. D...  
2. to ...  
3. Prof. ...

Dear Colleague

As you know, the Bureau wishes to give member associations plenty of opportunity to comment on its ideas for amending FIG's Statutes and Internal Rules, to ensure that the final document, to be submitted for formal ratification by the General Assembly in Brighton in July, commands maximum membership support.

The objectives of the Bureau in proposing these amendments are, amongst others, to

- enable FIG to broaden its base;
- encourage the international development of the surveying profession;
- create opportunities for all member associations to contribute to the development of FIG's aims, policies and work plans; and
- guarantee the on-going good governance of the Federation.

To this end, during the past two years I and my colleagues on the Bureau have discussed our proposals with individual representatives of a number of member associations. I also invited the Permanent Committee, at its meeting in Singapore, to comment on some of the proposed changes to the existing Statutes and Internal Rules.

The greater part of the debate prior to and at the Singapore meeting was generated by the proposals that

1. any association which meets the criteria for admission should be able to join FIG;
2. votes should continue to be exercised by member associations;
3. the only exception to weighted voting should be the granting of one extra vote to a member association with more than 4,000 members.

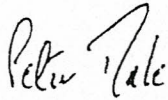
Time for debate was unfortunately short; but for each of these three proposals an indicative vote was requested. The PC was broadly in favour of (1). On (2) the majority were in favour of votes being exercised by country rather than by member association. On (3) only a minority of delegates, mainly from the larger member associations, expressed a preference for weighted voting.

/.....



I am circulating the Bureau's final draft of the new Statutes and Internal Rules now, together with these two explanatory letters, to enable you to consult your members and, I hope, secure their endorsement of a constitution and subscription structure which the Bureau is confident will enable FIG to realise its stated aims and objectives well into the 21<sup>st</sup> century. If you have any advance comments or queries, please send these to the Bureau office.

Yours sincerely

A handwritten signature in cursive script that reads "Peter Dale".

**PETER DALE**  
President, FIG

**INTERNATIONAL FEDERATION OF SURVEYORS****DRAFT STATUTES AND INTERNAL RULES****PREAMBLE**

The International Federation of Surveyors, founded in 1878, is an international, non-government organisation (NGO) registered in the country in which its permanent office is domiciled, whose aim is to ensure that the disciplines of surveying and all who practise them meet the needs of the markets and communities that they serve. It operates under the following Statutes.

**STATUTES****1.0 DEFINITIONS**

1.1 In these Statutes the following definitions shall apply

1. "Federation" means the International Federation of Surveyors
2. "Internal Rules" means rules prescribed by the General Assembly for the efficient and democratic management of the affairs of the Federation
3. "Permanent Institution" means an institution established for the purpose of pursuing specific on-going tasks
4. "Permanent Office" means the office for the purpose of administering the work of the Federation
5. "surveyor" means a professional person with the academic qualifications and technical expertise to practise the science of measurement; to assemble and assess land and geographic related information; to use that information for the purpose of planning and implementing the efficient administration of the land, the sea and structures thereon; and to instigate the advancement and development of such practices. The full definition is given in the Appendix.

**2.0 OBJECTIVES**

2.1 The objectives of the Federation are

1. to provide an international forum for the exchange of information about surveying and for the development of fellowship between surveyors
2. to collaborate with the United Nations and other international and regional agencies in the formulation and implementation of policies affecting the use, development and management of land and marine resources
3. to promote the disciplines of surveying, particularly in developing countries and countries in economic transition



4. to promote the role of the surveyor in the management of natural and man-made environments
5. to promote the development of national associations of surveyors and to promote professional standards and codes of ethics and the exchange of surveying personnel
6. to promote high standards of education and training for surveyors and to facilitate continuing professional development (CPD)
7. to encourage the development and proper use of appropriate technology
8. to encourage research in all disciplines of surveying and to disseminate the results.

2.2 The Federation shall abstain from any interference in questions of a political, racial or religious nature.

2.3 The Federation shall not permit any of its activities to be influenced by statements or actions of a political, social or religious nature.

### **3.0 MEMBERS**

3.1 There shall be the following categories of members

1. member association: a national association representing one or more of the disciplines of surveying.
2. affiliate: a group of surveyors undertaking professional activities but not fulfilling the criteria for member associations
3. sponsor: an organisation, institution or agency which manufactures or distributes instruments, equipment or supplies or which operates or provides commercial services in support of the profession
4. academic member: an organisation, institution or agency which promotes education or research in one or more of the disciplines of surveying
5. correspondent: an individual in a country where no association or group of surveyors exists that is eligible to join the Federation as a member association or affiliate
6. honorary president: a past president who has rendered outstanding service to the Federation during his or her period of office
7. honorary member: an individual who has materially assisted the development and promotion of the surveying profession at the international level.

3.2 The admission of a member association and the appointment of an honorary president and honorary member shall be decided on a vote of the General Assembly. All other admissions shall be decided by the Bureau.

3.3 Membership shall cease by resignation or by expulsion on a vote of the General Assembly.



#### **4.0 FEES**

4.1 The General Assembly shall set levels of fees, including minimum and maximum levels, for member associations based on the numbers of their members.

4.2 Fees shall be payable annually on the first day of the calendar year in which they fall due.

4.3 The General Assembly shall have powers to expel from the Federation any member whose fees are in arrears. The General Assembly shall expel from the Federation any member whose fees are three years in arrears.

4.4 The fees payable by affiliates, sponsors and academic members shall be decided by the Bureau and reported to the General Assembly.

4.5 Honorary presidents, honorary members and correspondents shall not be required to pay any fees.

#### **5.0 ADMINISTRATION OF THE FEDERATION**

5.1 The Federation is an international organisation with its registered permanent office in Copenhagen, municipality of Frederiksberg, Denmark.

5.2 The business of the Federation shall be directed by the Bureau under the authority of the General Assembly and administered by the permanent office.

5.3 The Bureau is composed of the president of the Federation, three vice presidents, the secretary general, the treasurer and the congress director or otherwise as decided by the General Assembly.

5.4 The term of office of the Bureau shall be four years or otherwise as decided by the General Assembly.

#### **6.0 GOVERNANCE OF THE FEDERATION**

6.1 The Federation is governed by its General Assembly of member associations which shall meet once each calendar year. The meetings of the General Assembly should be held at intervals of about 12 months but must be no closer than nine months apart, except in the case of an extraordinary meeting.

6.2 Meetings of the General Assembly are presided over by the president of the Federation or, in his or her absence, by one of the vice presidents. Convening notices shall be sent out at least four months prior to each meeting.

6.3 The powers of the General Assembly are

1. to amend the Statutes of the Federation
2. to admit member associations and to appoint honorary presidents and honorary members
3. to appoint the Bureau and approve the responsibilities delegated to each of its members



4. to set levels of fees
5. to direct the work of the permanent office
6. to establish commissions, ad hoc commissions and permanent institutions
7. to adopt plans of work, budgets and audited statements of accounts
8. to prescribe Internal Rules
9. to expel member associations, affiliates, sponsors, academic members and correspondents
10. to do all such other matters as the Federation sees fit for the achievement and promotion of its objectives.

6.4 For a General Assembly to be constitutionally valid, there must be present at least one individual member of at least one third of the member associations. An individual member may represent only one member association.

6.5 All decisions of the General Assembly shall be taken by simple majority vote. Only member associations which have paid their fees for the previous calendar year and have no other arrears and which are represented at the meeting by an individual member shall be entitled to vote. Each member association shall nominate an individual member who shall be authorised to cast that member association's vote at any meeting or extraordinary meeting of the General Assembly.

6.6 The number of votes which may be cast by a member association is one, except that any member association having more members than a number set by the General Assembly shall be entitled to one additional vote.

6.7 The vote shall be taken by a show of hands unless a ballot is ordered by the president or requested from the floor. In the case of an equality of votes the president shall cast the deciding vote.

6.8 The Bureau or one third of the member associations can demand the convening of an extraordinary meeting of the General Assembly. The period of notice, quorum and voting procedures shall be the same as those for the General Assembly.

#### **7.0 POWER TO BIND AND LIABILITY**

7.1 FIG shall indemnify employees, members of the Federation and members of the Bureau against any liability in respect of actions properly taken on behalf of the Federation.

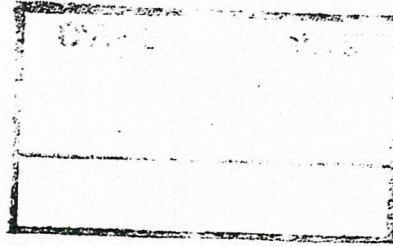
#### **8.0 FORCE MAJEURE**

8.1 In the event of force majeure rendering liaison with the majority of members of the Federation impossible, the Bureau shall take all measures necessary for the safety of the Federation's funds and its archives and for the custodianship of the Federation; but otherwise all activity of the Federation shall cease until conditions permit activities to be resumed.

#### **9.0 LANGUAGE**



22 April 1998



To: FIG member associations

cc: Commission officers  
Permenant institutions  
Correspondents  
Sponsors

FIG Bureau 1996- 1999  
12 Great George Street  
London SW1P 3AD

Tel: +44 (0)171-334 3796  
Fax: +44 (0)171-334 3719  
e - mail: figjw@rics.co.uk

Dear Colleague

Since taking office as Treasurer there has been pressure to review FIG's subscription structure so that larger member associations pay a fee more closely related to the numbers of their individual members. With the assistance of a small task force, I have developed various ideas; and at the Permanent Committee meeting in Singapore positive proposals were put forward for comment.

These proposals were

1. that subscriptions should continue to be based on the number of individual members of a member association but that the fixed fee and the capitation fee should be combined
2. that the fee should continue to be paid in respect of each individual member up to a maximum of 4,000 members
3. that for member associations with more than 4,000 members fees should be payable on a sliding scale

|   |                         |
|---|-------------------------|
| for each member up to 4,000 members                   | 100 per cent of the fee |
| for each member in excess of 4,000 and up to 10,000   | 10 per cent of the fee  |
| for each member in excess of 10,000 and up to 25,000  | 5 per cent of the fee   |
| for each member in excess of 25,000 and up to 50,000  | 4 per cent of the fee   |
| for each member in excess of 50,000 and up to 75,000  | 3 per cent of the fee   |
| for each member in excess of 75,000 and up to 100,000 | 2 per cent of the fee   |
| for each member in excess of 100,000                  | 1 per cent of the fee   |

4. that there should continue to be a minimum fee for small member associations.

Since the meeting in Singapore I have received no comments on these proposals and the Bureau has accordingly decided to seek approval for them from the General Assembly. If approved, the new subscription structure will take effect on 1 January 2000. In the meantime, it has been incorporated in the amended Statutes and Internal Rules for which approval is also being sought from the General Assembly.

/.....

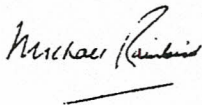


In order to introduce the new structure on a gradual basis it was suggested in Singapore that no member association should be required to pay a subscription greater than it would have previously paid, subject to an annual increase of seven per cent year-on-year (that is, compounded). This would have meant that a member association with 100,000 members would not have paid the full fee until 2009. However, even this gradual phasing in of the increase provoked some concern. I therefore sought alternative methods; but could not identify an index which would have covered the wide range of countries represented within the membership of FIG. I considered the possibility of applying national indices to each member association; but this could have led to two associations with the same number of members paying different subscriptions.

The Bureau is aware that, if substantial increases are introduced over too short a period, they could provoke the resignation of those member associations which are the major contributors to FIG's funds. The Bureau therefore proposes that the amount of the increase over and above the effect of any increase in the fee should not be established in perpetuity but should be agreed annually by the General Assembly; and will propose in Brighton that, with effect from 1 January 2000, the increase should be five per cent.

In parallel with the proposals to approve new Statutes and Internal Rules and a new subscription structure, the Bureau will also propose in Brighton that, with effect from 1 January 2000, FIG's operating currency should be US dollars, as this has for some time been the main international currency. If that proposal is approved, subscriptions for 2000 and onwards will be calculated and invoiced in that currency.

Yours sincerely



Michael Rainbird  
Treasurer, FIG



21 May 1998

To Member Associations  
Permanent Institutions  
Correspondents  
Sponsor Members  
Commission Officers

FIG Bureau 1996-1999  
12 Great George Street  
London SW1P 3AD  
Tel: +44 (0)171-334 3796  
Fax: +44 (0)171-334 3719  
e-mail: figjw@rics.co.uk

Dear Colleague

1998 FIG General Assembly and Permanent Committee meetings

I enclose one copy of the agenda and most of the supporting papers that are being issued in advance of these meetings, to be held in Brighton during the period of the 1998 Congress. Could member associations please copy these documents and make sure that each of their delegates to the General Assembly and Permanent Committee receives a set. Please also remind your delegates that they need to bring with them to Brighton the minutes of the 1997 PC meeting and the minutes of the General Assembly held in Melbourne in 1994.

Member associations are requested to study the enclosed agenda and papers and ensure that their delegates are fully briefed, particularly on those matters on which decisions need to be taken in Brighton. To assist this process the proposed new draft FIG Statutes and Internal Rules and the proposed new subscription structure have already been circulated (the President's and the Treasurer's letters of 22 April); and early in June we shall be issuing the draft work plan for 1998-2002, the draft of the FIG publication "Quality assurance in surveying education" and the remaining reports from commission chairs and directors of permanent institutions.

Member associations - and particularly those who will not be able to be represented at the meetings - are invited to let me know in advance of any comments they may have on any of the agenda items.

Could member associations that have not already done so please let me know who will be their delegates to the meetings and who will be the delegation leader. Also, the President still awaits a number of responses to his invitations dated 5 March to Presidents of member associations (or their representatives) to take part in a meeting in Brighton, on a day and at a time to be arranged, to discuss communications between the Bureau and member associations. It would be helpful to know in advance if your association would like to be represented at that meeting.

Yours sincerely

Roy Swanston  
Secretary-General

MODT. 25.5.98 J.N.L. 7.1.2.98 ✓  
KOPJ TIL ORIENTERING best made + K 13  
SENDT TIL BEHANDLING Skis E



**FIG GENERAL ASSEMBLY/PERMANENT COMMITTEE**

**ACTION CONSEQUENTIAL ON THE ADOPTION OF FIG'S NEW STATUTES AND  
INTERNAL RULES**

(for consideration by the meetings in Brighton, UK, July 1998)

1. If the General Assembly adopts the proposed new Statutes and Internal Rules, it will also have to

- determine the future status of existing institutional correspondents
- receive a report on levels of fees set by the Bureau for affiliates, sponsors and academic members
- decide the number of members of a member association that permits a second vote
- approve the responsibilities of Bureau members
- approve titles of commissions and their terms of reference.

(Consequential action relating to levels of fees payable by member associations is dealt with in the accompanying paper FIG(GA)P(98)14.)

2. Institutional correspondents

There are currently four institutional correspondents

- Brunei: Survey Department
- Chile: Servicio Hidrográfico y Oceanográfico de la Armada de Chile
- Colombia: Instituto Geográfico Agustín Codazzi
- Oman: Survey Department.

All meet criteria for affiliate membership and the Bureau therefore **invites the General Assembly** to agree that they be transferred to that category of membership.

3. Levels of fees for affiliates, sponsors and academic members

- **Affiliates:** the Bureau has decided that the annual fee should remain the same as that presently paid by institutional correspondents, amended to US\$250 as from 1 January 2000.
- **Sponsors:** since this category of membership was introduced in 1991 the fees have remained unchanged. The Bureau has decided that the time has now come to impose a modest increase, in keeping with the progressive increases that have been made to member associations' fees during the past eight years. The new rates will be

|              |   |              |
|--------------|---|--------------|
| 1999         | annual turnover over Sw.frs 70m         | Sw.frs 5,500 |
|              | annual turnover between Sw.frs 15 - 70m | Sw.frs 3,500 |
|              | annual turnover less than Sw.frs 15m    | Sw.frs 1,250 |
| as from 2000 | annual turnover over US\$50m            | US\$3,500    |
|              | annual turnover between US\$10 - 50m    | US\$2,500    |
|              | annual turnover less than US\$10m       | US\$1,000    |

- **academic members:** the Bureau has decided that the annual fee should be Sw frs 150 in 1999 and US\$100 as from 2000.

4. Number of members of a member association that permits a second vote

The Bureau **invites the General Assembly** to agree that this should be 4,001 upwards.

5. Responsibilities of Bureau members

The Bureau **invites the General Assembly** to approve Annex A to this paper.

6. Titles of commissions and their terms of reference

These are set out in Annex B and will also be considered at the meeting in Brighton of the Advisory Committee of Commission Officers. Subject to any amendments which ACCO may wish to propose and which are also supported by the Bureau, the Bureau **invites the General Assembly** to approve Annex B to this paper.

Deutscher Verein  
für Vermessungswesen e.V.



Der Präsident

DVW · c/o Stadtverwaltung, Amt 62/2 · 40200 Düsseldorf

FIG Bureau  
The Royal Institute of  
Chartered Surveyors  
The President Professor Peter Dale  
12 Great George Street  
GB-LONDON SW1P 3 AD

02.07.1998  
Az.: 10.3-98

Dear Mr. President,

I read with great interest the proposals of the office for amendment of the statutes and internal rules.

I would like to express the comments of the DVW with regards to three topics, and kindly request these comments to be made known to all member associations prior to the congress if possible. If this should not be possible, I kindly request these comments to be tabled to the members at the conference.

#### **Topic 1 "Voting structure"**

This problem has been the subject of discussion for many years. I was of the opinion that the discussion on the majority resolution "one country – one vote" as a recommendation for the general meeting at Brighton has been concluded. This is obviously not the case. With the new proposal (6.6 of the statutes in conjunction with the statements of the office in the letter dated 22. April 1998), the DVW could express their agreement in modified form. The DVW is namely of the opinion that the number of members should be taken into account through increased differentiation of weighting. In any event, three voting categories are to be introduced (e.g. < 1,500, 1,501 – 5,000, > 5,001). The aim of this proposal is to encourage the willingness to form national umbrella organisations; a development that will greatly benefit the public image of our profession.

#### **Topic 2 "registration fee" in congresses and working weeks**

In the opinion of the DVW, the congress fees in Brighton have reached an unreasonable level. It is almost no longer possible for those who have to pay these fees privately to participate. Even participation paid for or heavily subsidised by member associations that are not simultaneously quasi government associations, is only possible to a limited extent.

With regards to the critical remarks of Mr. Onsrud (Bulletin 64), the DVW is of the opinion that, in addition to other criteria, every member association applying for the organisation of a congress or a working week, must present a financial concept that also shows the registration fees for the mentioned events.

The DVW therefore rejects Item 16.6 of the internal rules relating to this problem and proposes that Item 16.2 be supplemented with the above concepts. This supplement could read as follows:

“It is compulsory that the financial concept shows the registration fees”.

The DVW would be prepared to provide such a financial concept for the congress 2006 in Munich until the PC in South Africa.

### **Topic 3 “Key currency”**

There is no necessity to change from Swiss francs as a key currency. For neutrality reasons, I do not consider it opportune to introduce the currency of one of the largest economic blocs (Dollar or Euro), as the Swiss currency is a very “hard” currency.

Yours sincerely

gez.: Dr. Platen

Dr.-Ing. Hans Josef Platen  
DVW-President

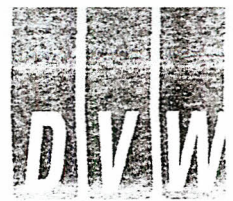
Herrn Professor  
Dr.-Ing. Holger Magel  
c/o Lehrstuhl für Bodenordnung und  
Landentwicklung, TU München  
Arcisstraße 21  
D-80333 MÜNCHEN

Herrn  
Dr.-Ing. Andreas Drees  
Postfach 2409  
D-48145 MÜNSTER

Comité Français de Représentation a la  
Fédération Internationale des Géomètres  
President Michel Mayoud  
40 Avenue Hoche  
F-75008 PARIS

zur Kenntnis





Der Präsident.....

DVW · c/o Stadtverwaltung, Amt 62/2 · 40200 Düsseldorf

July 2<sup>nd</sup> 1998

## Motions proposed by Germany to the General Assembly

### 1. VOTING STRUCTURE

The motion is that the PC and the General Assembly decide that every member association of FIG should have one vote. Associations with more than 1.500 members should have a second vote, and associations with more than 5.000 members should have a third vote.

### 2. REGISTRATION FEE

✓ The motion is that the PC and the General Assembly decide that every applicant for the congress or a working week should submit a financing concept ~~that includes also the registration fee.~~

### 3. KEY-CURRENCY

The motion is that the PC and the General Assembly decide that the Swiss Franc continues to be the key currency of FIG.

Dr.-Ing. Hans Josef Platen  
DVW-President



40 Avenue Hoche  
F - 75008 PARIS  
Téléphone : (0)1 53 83 88 00  
Télécopie : (0)1 45 61 14 07

## To the Bureau and to all delegations of FIG

June 19<sup>th</sup> 1998

**Object : modifications of the statutes**

Dear colleagues,

In the previous PC discussions in Singapore, the French delegation expressed various reservations on some proposals, raising also the very fundamental questions which were behind : what is a "surveyor" in our language(s) and in each of our countries? who and what are FIG members? how to grant them fairly with adequate voting rights while keeping a respectable and manageable situation? how to increase the cohesion and the consensual spirit in the decision process? On all crucial points relating to voting rights and to subscription structure, it appears that the votes and advices of the 64<sup>th</sup> PC are not accepted by the Bureau, and the "Comité Français de Représentation à la FIG" felt therefore necessary to re-express its position and to circulate it, for information and for giving elements to the discussion.

### 1. VOTING RIGHTS

After a large debate on the question, the previous PC has expressed - by a substantial majority - that votes should be cast by country (one country, one vote), together with a strong assessment that all decisions must be taken by simple majority vote, each vote having equal value (no weighting), and no extra vote being granted to any kind of "large" member (see point 2). Although France was in favour of a direct weighting but only for a very few fundamental decisions to be taken from a qualified majority, we accept this wise position of the 64<sup>th</sup> PC. Acceptable & respectable governing rules have to be settled on fair and egalitarian principles. *We therefore re-affirm that there is no threshold which can justify the privilege of having one more voice against all others* : being a large Association is normal when being a large country, and should a weighting system be introduced, it must be a general one (proportional factor with respect to the total number of individuals) which gives each country its right weight.

As for the justification expressed by the Bureau, FIG is indeed a Federation of Associations, but each country has a different model of professional organisation, and many specialities covered by the very large and rather vague definition of a "surveyor" may correspond to different national structures, which also refer to other International Organisations (IAG, ISPRS, IHO, ICA, etc.). It is then not realistic to believe that countries will be really represented within FIG only when *all* "surveying" disciplines will be in the ranks. The various meanings of the English word "surveyor" are misleading if no adjective is there for designating more precisely the activity, and none of the existing organisational models can pretend to be universal. It therefore belongs to each country to conclude on what is acceptable in the definition and what is possible with its own national organisations and professional associations. It is of course important that efforts be made for gathering a large spectrum of professionals but, whatever is the result, it reflects a national situation - and this cannot give grounds for considering that this country is well or badly represented and that its surveying interests (at national level) cannot be expressed by the existing member(s).

As already expressed by the 64<sup>th</sup> PC, *let's therefore keep to one vote per country* - with an "ad hoc" formal or informal co-ordination structure between national associations for the few dual membership cases - *and only one vote*, whatever are the size of the country, the meanings of the word "surveyor" in its national language(s), the kinds and the number of "surveyors" gathered in the representation.

**ORDRE DES GÉOMÈTRES-EXPERTS (OGE) & ASSOCIATION FRANÇAISE DE TOPOGRAPHIE (AFT)**  
Membres adhérents

ASSOCIATION FRANÇAISE POUR L'INFORMATION GÉOGRAPHIQUE (AFIGEO)  
COMITÉ FRANÇAIS DE CARTOGRAPHIE (CFC)  
COMITÉ NATIONAL FRANÇAIS DE GÉODÉSIE ET GÉOPHYSIQUE (CNFGG), SECTION DE GÉODÉSIE  
SOCIÉTÉ FRANÇAISE DE PHOTOGRAMMÉTRIE ET TÉLÉDÉTECTION (SFPT)  
Membres correspondants



In addition, like already said in Singapore, we must be conscious that the changes proposed by the Bureau may induce troublesome consequences. Letting one vote per Association and giving one additional voice to a few "large" members will incite countries with umbrella organisations or co-ordination structures (like our French Comité) to break-down into components for getting other voices... Then why not considering the local or regional entities, mainly in Federal systems, which fully comply with application criteria? Let's avoid any temptation of such bad games.

## 2. SUBSCRIPTION STRUCTURE

We are again proposed a subscription structure which cannot be basically fair and which would give an enormous advantage to the UK model of organisation. This huge organisation, the Royal Institution of Chartered Surveyors (RICS), is nearly 100 000 people from the whole "property" professions - most of them being connected to construction and to real estate businesses. The present subset of "geodetic" surveyors, land or urban managers and valuers which relates to FIG is about 4000.

Considering now the proposed sliding scale and doing some simple arithmetic in this highly degressive grid, it appears that from 4000 (upper limit at 100%) to 100 000, the total makes only 7600 units (of capitation fees) to pay. Even if the increase is indeed 3600 units, it means that for 7600 people paying the present regular price, 92400 other people will enter for free. We cannot of course accept this idea, but if 96000 new people are really desiring to enter FIG, we suggest to reduce consequently the capitation fee at a reasonable - but still identical - level for everybody... Anyhow, first introducing the fields of construction and real estate businesses (with closer links with FIABCI, the international federation of land & estate agents) and then wanting to offer incredibly good conditions to this overwhelming majority cannot be considered as goals of general interest without a thorough discussion on this topic.

During the discussion in Singapore, about this question of money, two delegations of rich countries expressed their concern that placing a too great burden on the largest member associations could cause them to restructure or even to leave FIG (cf. official minutes). We do affirm that *the only acceptable rule is to put an equal burden on each individual in all member-associations (anyone entering FIG has to pay the same price, wherever he is from) - and that if an exception is to be made, it must be in favour of countries having real economical problems, i.e. where the FIG annual fees are really heavy with respect to the average net income.*

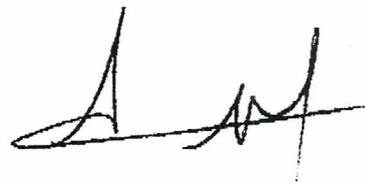
Incidentally, we are also proposed to switch from Swiss francs to US dollars for FIG budget. Looking at the fluctuations \$/CHF over years, all our bankers are telling us that it would be presently a mistake : the US dollar is not so stable, and the whole picture is going to change with the introduction of Euros. Considering also that the permanent office will be in Europe, *the only wise attitude is to wait and see what happens to all currencies, including now Euros, before changing anything in the FIG budget.*

As a conclusion, from our point of view, it appears that problems come from the turn given to FIG in a way which corresponds only to a few "British-like" models of organisation. Let's be conscious of the reality : FIG is not offering so much opportunities of professional meetings, and most of the "measuring" surveyors can find elsewhere (in seminars, symposia or conferences organised by other national or international organisations) their subjects of interest, in many technical fields and applications. We are thinking that such a fundamental change would lead specific members (i.e. associations or institutes dealing with specific technical matters) to leave FIG. In addition, licensed surveyors in private practice may find most of their needed international support in "regional" organisations (like CLGE for Europeans) connected to a given local system of agreements. Seen from many professional fields, the real links to FIG are fragile, and delegations have to be very wary in any fundamental change.

All these views or elements of analysis have been discussed and agreed in our plenary meeting held on June 18<sup>th</sup> (see proposed motions annexed) and we hope that it will help in having fruitful discussions and mainly wise decisions.

Looking forward to meeting you at the Congress, and with our best regards,

Yours sincerely,



Michel Mayoud, President - on behalf of the whole CFR-FIG



29 September 1998

1) Dr. Platen

2) Dr. Drees

3) Prof. Nagel

fe 1 kopie

FIG(GA)M(98)1

12

INTERNATIONAL FEDERATION OF SURVEYORS

MINUTES

of the 21<sup>st</sup> General Assembly and 65<sup>th</sup> Permanent Committee held at the Brighton Centre, UK on 19  
and 25 July 1998

First session, Sunday 19 July, 09.00 - 13.00; 14.00 - 15.30

1. OPENING PROCEEDINGS

In formally opening the meeting President Peter Dale welcomed all participants and invited Secretary-General Roy Swanston to take the roll call (a list of those present at both sessions is attached at Appendix A)

The General Assembly meeting resolved to send a message to FIG's longest-serving Honorary Member, Edna Rutland (UK), appointed in 1938 but unable to be in Brighton.

The General Assembly resolved to appoint Messrs. Klimes and Oshina as tellers for the duration of the meeting.

2. ADOPTION OF THE AGENDA

The General Assembly adopted the previously circulated agenda subject to

- the deletion of the items on the report on QA in surveying education (to be considered by Commission 2) and the presentation of the map of New South Wales (to be made during the ad hoc history commission's symposium)
- the reception of the list of nominations for commission officers 1998-2002 as a new item 5
- the inclusion of the Congress Director's report as a new item 32.

3. NOMINATIONS OF COMMISSION OFFICERS 1998-2002 (FIG(GA)P(98)10 - tabled)

The President reported that, due to business and family commitments, Steve de Loach (USA and currently vice-chair of Commission 6) was unable to stand for election as chair of Commission 6 and that the Bureau, in consultation with the American Congress on Surveying and Mapping and the Comité Français de Représentation à la FIG, was recommending the election of Michel Mayoud (France and currently chair, WG 6A) in his place.

The General Assembly resolved that its thanks and good wishes be sent to Steve de Loach.

4. MINUTES

The minutes of the 20<sup>th</sup> General Assembly held in Melbourne in 1994 were adopted.

The minutes of the 64<sup>th</sup> Permanent Committee meeting held in Singapore in 1997 were adopted subject to the addition of the Union of Surveying Engineers of Serbia and Montenegro to the list of member associations present.

that registrations for future FIG meetings should be evaluated for gender representation; and that gender-neutral language should be adopted throughout FIG.

19. FIG TASK FORCE ON STANDARDS

Iain Greenway (UK), chair, spoke to the task force's interim report (tabled - copy attached at Appendix E). The General Assembly endorsed the proposed work plan, including work to be undertaken prior to the 1999 working week, together with the recommendations that all commissions, ad hoc commissions and the FIG multi-lingual dictionary should be represented on the task force and that it should run until at least 2001.

The General Assembly noted the constructive discussions that had taken place during the ISO-sponsored meeting in Brighton on the Canadian proposal that a standard be established for the certification of surveying qualifications.

20. FIG TASK FORCE ON MUTUAL RECOGNITION OF QUALIFICATIONS

Stig Enemark (Denmark), chair, presented an interim report (copy attached at Appendix F). The General Assembly endorsed the aims which the task force had set itself and noted that a draft report would be available for discussion at the 1999 working week, prior to a final report being presented for adoption in 2000.

21. FIG TASK FORCE ON SUSTAINABLE DEVELOPMENT

Markku Villikka (Finland), chair, spoke to the task force's interim report (tabled - copy attached at Appendix G) tabled paper. The General Assembly endorsed the terms of reference and the programme of work, including outputs, which the task force had set itself, together with its proposed composition.

22. REPORT OF THE ADVISORY COMMITTEE OF COMMISSION OFFICERS (ACCO)  
(FIG(GA)P(98)13 - tabled; copy, without enclosures, attached at Appendix G)

The General Assembly noted the report.

23. SUBSCRIPTION STRUCTURE

The President moved adoption of the Bureau's motion that the General Assembly adopt the proposals in the Treasurer's letter of 22 April 1998 and a further proposal that the maximum fee for the year 2000 should be 105 per cent of the fee payable by a member association with 4,000 members. The motion was seconded by Australia.

The French delegation expressed a preference for a structure based on numbers of members of each surveying discipline within each member association. The Norwegian delegation was in favour of retaining the existing structure and existing ceilings. A motion moved by France and seconded by Argentina that the introduction of a sliding scale of subscriptions for member associations with more than 4,000 members be deferred until 1999 was defeated and the General Assembly then debated and adopted the Bureau's motion that

1. subscriptions should continue to be based on the number of individual members of a member association
2. the fee should be paid in respect of each individual member up to a maximum of 4,000 members



3. for member associations with more than 4,000 members fees should be payable on a sliding scale
4. there should continue to be a minimum fee for small member associations
5. the maximum fee for the year 2000 should be 105 per cent of the fee payable by a member association with 4,000 members.

## 24. STATUTES AND INTERNAL RULES

Vice-President Grahame Lindsay moved adoption of the Bureau's motion that the General Assembly adopt the Statutes and Internal Rules attached to the paper which had been circulated to all delegations earlier in the week, subject to the inclusion of a further Internal Rule stating the registered address of the FIG Permanent Office. The motion was seconded by the USA (ACSM).

A motion by France, seconded by Kenya, that voting should be on the basis of one country, one vote, was defeated.

The following amendments were moved, debated and approved:

- removal of the entitlement of certain member associations to a second vote (moved by Canada, seconded by Norway), thereby amending Statute 6.6 to read "The number of votes which may be cast by a member associations is one."
- an addition to Statute 6.2 (on the convening of General Assemblies): "A full agenda, with motions for each item to be put to the meeting, shall be sent out at least two months prior to the meeting and shall also be placed on the FIG home page on the World Wide Web." (moved by Finland, seconded by Latvia)
- removal of the requirement that the Bureau must approve acceptance of abstracts of papers in languages other than English (moved by France, seconded by the Bureau), thereby amending (renumbered) Internal Rule 17.6 to read "All papers shall be accompanied by abstracts which must be in English. Papers presented at congresses and working weeks may also be accompanied by abstracts in other languages including French and German."
- the reinsertion of the list of founder members in the preamble to the Statutes (moved by France, seconded by Belgium), thereby amending the first sentence of the preamble to read "The International Federation of Surveyors was founded in 1878 as the Fédération Internationale des Géomètres (FIG) by seven national associations of surveyors representing Belgium, France, Germany, Italy, Spain, Switzerland and the United Kingdom."
- the requirement that a bid to host a congress of working week should be accompanied by an indicative budget (moved by Germany, seconded by the Netherlands), thereby amending (renumbered) Internal Rule 17.2 to read "A member association or associations wishing to host a congress or a working week in its country shall make a submission, accompanied by an outline budget, to the Bureau ....."
- the ability to exercise discretionary powers in expelling member associations in arrears with their subscriptions (moved by the UK, seconded by New Zealand), thereby amending the second sentence of Statute 4.3 to read "The General Assembly shall under normal circumstances expel from the Federation any member association whose fees are three years in arrears."

The Bureau then moved a substantive motion that the Statutes and Internal Rules, incorporating the foregoing amendments, be adopted. The motion was accepted by acclamation.

[Note: the Statutes and Internal Rules, as adopted by the General Assembly can be viewed on the FIG home page and are also available as FIG publication no. 18]

**INTERNATIONAL FEDERATION OF SURVEYORS**

**FIG 32<sup>nd</sup> GENERAL ASSEMBLY  
4 and 8 May 2009  
Big Blue Hall, Dan Hotel, Eilat, Israel**

**List of Items**

**Monday, 4 May, 09:00-12:00 and 13:30-15:00**

1. OPENING PROCEEDINGS
2. ROLL CALL
3. APPOINTMENT OF TELLERS
4. ADOPTION OF THE AGENDA
5. ADOPTION OF THE MINUTES OF THE 31<sup>st</sup> GENERAL ASSEMBLY
6. MEMBERSHIP
7. PRESIDENT'S REPORT
8. CHANGES IN THE FIG COUNCIL AND RESPONSIBILITIES OF THE COUNCIL MEMBERS
  
9. HONORARY MEMBER
10. ELECTION OF COMMISSION CHAIR ELECT FOR COMMISSION 8 AND 10 FOR 2009-2010
11. REPORTS FROM THE DIRECTORS OF PERMANENT INSTITUTIONS
12. REPORT OF THE PRESIDENT OF THE FIG FOUNDATION
13. REPORTS OF CURRENT TASK FORCES
14. NEW TASK FORCE ON SPATIALLY ENABLED SOCIETIES
15. NEW FIG AFRICA TASK FORCE 2009-2014
16. YOUNG SURVEYORS NETWORK
17. CO-OPERATION WITH THE UNITED NATIONS AND THE WORLD BANK
18. LIAISON WITH INTERNATIONAL PROFESSIONAL ORGANISATIONS
19. CHANGES TO THE FIG INTERNAL RULES
20. FIG ACCOUNTS FOR 2008 AND AUDITOR'S REPORT, AND BUDGET FOR 2009, 2010 AND 2011
21. SUBSCRIPTION RATES FOR 2010
22. ELECTION OF COMMISSION 8 CHAIR ELECT 2009-2010
23. COMMISSION REPORTS

**Friday, 8 May, 9:00-11:00 - Presidents' Meeting (by invitation only)**

24. PRESIDENTS' MEETING

**Friday, 8 May, 11:30-12:30**

25. ROLL CALL
26. MEMBERSHIP
27. REPORTS ON CO-OPERATION WITH THE FIG CORPORATE MEMBERS, FIG FOUNDATION AND YOUNG SURVEYORS NETWORK
28. DECISION ON THE VENUE OF THE FIG WORKING WEEK 2013
29. 7<sup>th</sup> FIG REGIONAL CONFERENCE IN HANOI, VIETNAM, 19-22 OCTOBER 2009
30. REPORT THE CONGRESS 2010 IN SYDNEY, AUSTRALIA, 11-16 APRIL 2010
31. PRESENTATION OF CERTIFICATES OF APPRECIATION



Honorary President Robert Foster, USA expressed his thanks on the improved finance situation and reporting and raised the issue whether an internal auditing system from the General Assembly could be considered. The Council will consider this when it discusses the finance reporting system next time. At the time the official auditing system has been considered to be sufficient together with the reporting on the reserves to the General Assembly.

**Motion:** That the General Assembly approves following motions from the finance report:

- changes to the financial reporting template, presented as Annex 20B
- creation of general and specific reserves for FIG, as described in section 5 of the finance report (including commission reserves; office development activities; support for very poor member associations; support for Task Forces; and activities with young surveyors
- that the General Reserve will be managed by the Council in the range 90-100% of regular annual expenditure, and that Council will review this range every two years (when agreeing the work plan for each new Council, and at the mid-term review of the work plan.

That the General Assembly adopts the audited accounts for 2008 and budgets for 2009–2011.

**Decision:** The General Assembly adopted

1. the audited accounts for 2008 as presented;
2. changes to financial reporting template;
3. creation of general and specific reserves for FIG and their management as proposed; and
4. budgets for 2009-2011 as proposed (after confirmation of subscription rates).

## 21. SUBSCRIPTION RATES FOR 2010

The General Assembly has to set levels of fees for member associations two years in advance of the year in which they become payable. Fees are payable in respect of each individual member up to a maximum of 4,000 members; member associations with more than 4,000 members are paying fees in accordance with a sliding scale. Membership fees have been discussed as part of the finance report, **appendix to item 20**.

The 2008 General Assembly approved membership fees for 2010 as follows:

| <u>Year</u> | <u>Per capita fee</u>   | <u>Minimum fee</u> | <u>Maximum fee</u>   |
|-------------|---|--------------------|--|
| 2009        | 4.18 € per member up to a maximum of 4,000 members.<br>Member associations from countries listed by the World Bank as low-income economies or lower-middle-income economies shall pay 2.09 € per member up to a maximum of 4,000 members. | 200 EUR            | 136 per cent of the fee payable by an association with 4,000 members                           |
| 2010        | 4.30 € per member up to a maximum of 4,000 members<br>Member associations from countries listed by the World Bank as low-income economies or lower-middle-income economies shall pay 2.15 € member up to a maximum of 4,000 members.      | 200 EUR            | 139 per cent of the fee payable by an association with 4,000 members (equal to 5,440 members). |

The World Bank lists of the low-income economies and the lower-middle-income economies are available at:

<http://web.worldbank.org/WBSITE/EXTERNAL/DATASTATISTICS/0,,contentMDK:20421402~pagePK:64133150~piPK:64133175~theSitePK:239419,00.html>



On consideration of the table above, and in light of comments by a number of (small and large) member associations, the Council proposes two structural changes:

- To fix the sliding maximum scale for subscriptions at 5,500 members from 2010;
- To reduce the minimum number of members used in calculating the subscription to 20, and the minimum annual subscription to €50 (whichever of the two figures is the greater). This is to address particular concerns raised by some African countries.

In addition, the Council has reflected on the size of the FIG reserve, and the current financial situation. The Council believes that the finances of the Federation are healthy enough to freeze 2010 subscriptions at 2009 levels. Recognising the impacts of the current economic situation on all members, Council therefore proposes that the General Assembly amend the subscription rates for member associations for 2010, and sets 2011 subscriptions as in the table below:

| <u>Year</u> | <u>Per capita fee</u>   | <u>Minimum fee</u>                        | <u>Maximum fee</u>   |
|-------------|---|---|--|
| 2009        | 4.18 € per member up to a maximum of 4,000 members.<br>Member associations from countries listed by the World Bank as low-income economies or lower-middle-income economies shall pay 2.09 € per member up to a maximum of 4,000 members. | 200 €                                     | 136 per cent of the fee payable by an association with 4,000 members |
| 2010        | 4.18 € per member up to a maximum of 5,500 members.<br>Member associations from countries listed by the World Bank as low-income economies or lower-middle-income economies shall pay 2.09 € per member up to a maximum of 5,500 members. | 20 members or 50 € (whichever is greater) | 5,500 members (22,290 €)   |
| 2011        | 4.30 € per member up to a maximum of 5,500 members<br>Member associations from countries listed by the World Bank as low-income economies or lower-middle-income economies shall pay 2.15 € member up to a maximum of 5,500 members.      | 20 members or 50 € (whichever is greater) | 5,500 members (23,560 €)   |

The Council intends to follow the same principle of freezing 2010 subscriptions at 2009 levels when setting subscription levels for other categories of members.

The Council proposes to the General Assembly to increase membership fees for member associations for 2011 with 2.9 per cent to 4.30 € per member from 2010.

**Motion:** That the General Assembly adopts following membership fees payable by member associations in 2010 and 2011:

| <u>Year</u> | <u>Per capita fee</u>   | <u>Minimum fee</u>                           | <u>Maximum fee</u>       |
|-------------|---|--|--------------------------|
| 2010        | 4.18 € per member up to a maximum of 5,500 members.<br>Member associations from countries listed by the World Bank as low-income economies or lower-middle-income economies shall pay 2.09 € per member up to a maximum of 5,500 members. | 20 members or 50 €<br>(whichever is greater) | 5,500 members (22,290 €) |
| 2011        | 4.30 € per member up to a maximum of 5,500 members<br>Member associations from countries listed by the World Bank as low-income economies or lower-middle-income economies shall pay 2.15 € member up to a maximum of 5,500 members.      | 20 members or 50 €<br>(whichever is greater) | 5,500 members (23,560 €) |

**Decision:** The motion was adopted.

## 22. ELECTION OF COMMISSION 8 CHAIR ELECT 2009-2010

The General Assembly has listened to the presentations on the two candidates for the position of Commission 8 Chairs Elect earlier at this session. The election takes place in this session. The term of office of the elected Chair Elect will be 4.5.2009-31.12.2010. Under normal circumstances the Chair Elect will be automatically elected as Chair of his Commission for the term of office 1.1.2011-31.12.2014. According to the Internal Rules the election takes place with blind ballots.

The election takes place between following candidates:

- Mr. Wafula Nabutola, Kenya (ISK)
- Dr. Richard Sliuzas, the Netherlands (GIN)

**Appendix to item 10 and 22:** Nomination templates of candidates to Commission 8 Chairs Elect for 2009-2010:

- Mr. Wafula Nabutola, Kenya (ISK)
- Dr. Richard Sliuzas, the Netherlands (GIN)

**Motion:** That the General Assembly elects the Chair Elect to Commission 8.

**Decision:** At the election 35 votes were given. Mr. Wafula Nabutola got 24 votes and Dr. Richard Sliuzas 11 votes, so Wafula Nabutola from ISK, Kenya was appointed to Chair Elect of Commission 8 for period 4.5.2009-31.12.2010.

## 23. COMMISSION REPORTS

Vice President Matt Higgins, Chair of ACCO made an introduction presentation on behalf of the ACCO on the Commission activities and on results of the ACCO meeting that was held in Eilat 3 May 2009. In his presentation he raised a few questions that were discussed with the FIG members at the meeting. At the General Assembly more than one hour was reserved for a podium discussion with Commission chairs. The discussion was chaired by Matt Higgins. Each Commission presented one topic on Commission highlights and one on its future challenges.

**INTERNATIONAL FEDERATION OF SURVEYORS**

**FIG 34<sup>th</sup> GENERAL ASSEMBLY**

**18 and 22 May 2011**

**Salle Mazagan, Ryad Mogador Hotel (18 May) and Palais des Congrès (22 May),  
Marrakech, Morocco**

**List of Minutes Items**

**Wednesday, 18 May, 09:00-12:00 and 13:00-15:00**

1. OPENING PROCEEDINGS
2. ROLL CALL
3. APPOINTMENT OF TELLERS
4. ADOPTION OF THE AGENDA
5. ADOPTION OF THE MINUTES OF THE 33<sup>rd</sup> GENERAL ASSEMBLY
6. MEMBERSHIP
7. EVALUATION REPORT OF FIG ACTIVITIES 2007-2010
8. PRESIDENT'S REPORT
9. APPOINTMENT OF AN HONORARY PRESIDENT
10. REPORTS FROM FIG COMMISSIONS AND FIG NETWORKS 2007-2010
11. REPORTS FROM THE DIRECTORS OF PERMANENT INSTITUTIONS 2010
12. REPORT OF THE PRESIDENT OF THE FIG FOUNDATION 2010
13. REPORTS OF TASK FORCES 2010
14. CO-OPERATION WITH THE UNITED NATIONS AND THE WORLD BANK
15. LIAISON WITH INTERNATIONAL PROFESSIONAL ORGANISATIONS
16. FIG COUNCIL WORK PLAN 2011-2014
17. COMMISSION WORK PLANS 2011-2014
18. TASK FORCE ON SURVEYORS AND CLIMATE CHANGE
19. TASK FORCE ON PROPERTY AND HOUSING
20. FIG ACCOUNTS FOR 2010 AND AUDITOR'S REPORT AND BUDGET FOR 2011 AND 2011-2014
21. SUBSCRIPTION RATES FOR 2013
22. MEMBERSHIP ISSUES (VOTING RIGHTS)

**Friday, 20 May, 11:00-12.30 – Breakout Session on Membership Issues (Voting Rights)**

23. BREAKOUT SESSION ON MEMBERSHIP ISSUES (VOTING RIGHTS)

**Sunday, 22 May, 8:30-10:30 – Presidents' Meeting (by invitation only)**

24. PRESIDENTS' MEETING

**Sunday, 22 May, 11:00-12:30 and 14:00-16:00**

25. ROLL CALL
26. MEMBERSHIP
27. REPORTS FROM ACCO AND COMMISSION CHAIRS
28. REPORTS FROM TASK FORCES
29. CO-OPERATION WITH THE FIG CORPORATE MEMBERS
30. MEMBERSHIP ISSUES (VOTING RIGHTS)



In the discussion DVW, Germany remarked that DVW would need to revert to its membership should membership fee for DVW exceeded 25,000 EUR per annum; the Appraisal Institute, USA suggested that in current economic situation the Council should consider increasing the reserve limits from the current level and RICS, UK was asking for more performance indicators on the effective use of the finances.

**Motion:** That the General Assembly adopts following membership fees payable by member associations in 2013:

| <u>Year</u> | <u>Per capita fee</u>  | <u>Minimum fee</u>                           | <u>Maximum fee</u>       |
|-------------|--|--|--------------------------|
| 2013        | 4.48 € per member up to a maximum of 5,500 members<br>Member associations from countries listed by the World Bank as low-income economies or lower-middle-income economies shall pay 2.24 € member up to a maximum of 5,500 members. | 20 members or 50 €<br>(whichever is greater) | 5,500 members (24,640 €) |

**Decision:** The motion was adopted.

## 22. MEMBERSHIP ISSUES (VOTING RIGHTS)

Council recognized that as FIG intends to grow its membership and progresses, that with multiple member associations from a single country as well as consolidation into one association in some others, that Council need to review various membership issues including that of voting rights. The Council has considered this issue and want to discuss it with member associations at this General Assembly. President Teo presented the Council discussion paper at the meeting. The voting right issue and the discussion paper was further discussed and debated at a breakout session on Friday 20 May 2011 from 11:00 to 12:30 facilitated by Vice President Greenway who also reported back to the General Assembly at the second session. Council sought direction from the General Assembly.

**Appendix to item 22:** President Teo's presentation on the membership issue – handouts of the PowerPoint presentation.

**Motion:** That the General Assembly records the presentation and discussion paper and agree to the breakout session on 20 May 2011 (11:00-12.30).

**Decision:** The motion was adopted.

## **FRIDAY 20 MAY, 2011**

### **Breakout Session on Membership Issues (Voting Rights), Friday, 20 May 11:00-12:30 Fes 2, Palais des Congrès, Marrakech**

## 23. BREAKOUT SESSION ON MEMBERSHIP ISSUES (VOTING RIGHTS)

Open discussion on the membership issues (voting rights) based on the introduction at the first session of the General Assembly by President Teo. Discussion is facilitated by Vice President Greenway and open for member associations interested in the topic. The meeting was attended by 30 participants representing 16 member associations.

**Appendix to item 23:**

- President Teo's presentation on the voting right issue – handouts of the PowerPoint presentation.

**Motion:** Outcome from the breakout session will be recorded and presented back to the General Assembly in its second session on Sunday, 22 May 2011.

**Decision:** The motion was adopted.

**SUNDAY 22 MAY, 2011**

**Presidents' Meeting, Sunday, 22 May, 8:30-10:30 (by invitation only),  
Fes 1, Palais des Congrès, Marrakech**

24. PRESIDENTS' MEETING

Totally 46 persons attended this Presidents' Meeting out of which 37 were Presidents or leaders of delegations. At the meeting challenges facing the member associations and relations between member associations and FIG were discussed as well as experiences from the FIG Working Week 2011. A separate memorandum of this meeting is circulated to the participants of the meeting and to the Presidents of member associations. The meeting concurred that future meetings could be convened in two sessions, the first for Presidents and Heads of Delegation to provide a report on their associations' activities as well as allowing those present to get to know each other earlier and the second, the traditional evaluation of the Working Week.

**Appendix to item 24:** Memo of the Presidents' meeting

**Second Session, Sunday, 22 May, 11:00-13:00 and 14:15-15:00  
Salle Royale, Palais des Congrès, Marrakech**

25. ROLL CALL

Vice President Staiger took the roll call.

The roll call was made only for member associations. Delegates representing affiliate members, academic members, corporate members and correspondents as well as honorary presidents and honorary members were entered in the records based on their registration and information given to the FIG Office.

Recorded that based on the decision of the General Assembly in 2006 only those member associations that had paid all their membership fees to the end of 2010 are allowed to vote at the meeting. A list of member associations that are not allowed to vote was published on the FIG web site 18 April and 12 May 2011.

Noted that the General Assembly had appointed Mr. Rob Sarib from SSSI, Australia and Mr. Aziz Hilali from ONIGT, Morocco as tellers for this session of the General Assembly.

**Appendix to items 2 & 25:** Roll Call.



**Decision:** The motion was adopted and the General Assembly recorded its thanks to the Corporate Members for their continuous support to FIG and to Peter Normann Hansen and Henning Elmstroem as its spokesperson.

### 30. MEMBERSHIP ISSUES (VOTING RIGHTS)

Vice President Greenway reported back to the General Assembly on the outcome of the breakout session on membership issues (voting rights).

**Appendix to item 30:** Vice President Greenway's summary on the breakout session – handouts of the PowerPoint presentation.

The General Assembly continue the discussion and debate that was robust in which a total of 16 delegates expressed their opinions. Arising from the discussion, the President proposed that the General Assembly establishes a working group on this matter and that the working group shall consult member associations and bring to the 2012 General Assembly a discussion paper on the matter. It was further proposed that the General Assembly constitutes the working group by nomination 6 – 7 members after the lunch break.

**Motion:** That the General Assembly records the report given and establishes a working group on the voting rights.

**Decision:** The General Assembly recorded the report and established a working group to prepare and bring to the 2012 General Assembly a discussion paper on the voting rights:

- following member associations will be represented in the working group: Belgium, Canada, Denmark, Germany, Hong Kong SAR, China (HKIS), Ireland (IIS), Italy, Kenya, Lebanon, Netherlands, New Zealand, South Africa and USA (AI)
- the Working group appoint a chairperson from amongst the group members.
- first invitation for starting the work of the Working Group will come from the Council
- the working group to bring forth a discussion paper and report back to the General Assembly in Rome in May 2012.

### 31. VENUE OF FIG WORKING WEEK 2015

The Council has not received full bids from member associations to host the FIG Working Week 2015. The Council has received letters of interest from several member associations, but because there are no full bids the Council has proposed to the General Assembly that it postponed the selection of the venue of FIG Working Week 2015 first in 2012 at the same time when decision on the venue for FIG Working Week 2016 will be made.

**Motion:** That the General Assembly postpone the decision on the venue of FIG Working Week 2015 until Rome 2012.

**Decision:** The motion was adopted.

### 32. REPORT ON THE FIG CONGRESS 2014 IN KUALA LUMPUR, MALAYSIA

President Mohammad Azmi Mohd Zin from the Malaysian Association of Authorised Land Surveyors Malaysia and representatives of the Organising Committee of FIG 2014 gave an oral presentation on preparations of FIG Congress 2014 and informed the General Assembly that the Congress will be in June 2014.

DVW e.V.  
Prof. Dr.-Ing. Karl-Friedrich Thöne • c/o TMLFUN • Hallesche Straße 16 • 99085 Erfurt

Brian Coutts  
Chair of FIG Working Group on voting rights

**Kontakt**

Prof. Dr.-Ing. Karl-Friedrich Thöne  
DVW-Präsident  
c/o Thüringer Ministerium für  
Landwirtschaft, Forsten, Umwelt  
und Naturschutz  
Hallesche Straße 16  
99085 Erfurt  
Tel. +49 (0)361 3799-701  
Fax +49 (0)361 3799-702  
karl-friedrich.thoene@dvw.de

29. August 2011

**Statement on voting rights**

DVW is fully aware of the complexity and sensibility of such an emotional topic namely the voting rights. The discussion in Marrakesh has proved this and underlines the necessity and responsibility of this working group.

The discussion about a reform of the voting system has forcingly to be decoupled from the membership fees. Otherwise it will lead to a poor-rich discussion which will destroy any debate culture and will put the promoters of a change in boxes and disqualify arguments as a justification.

1. DVW is extraordinarily appreciating the process of democratization within FIG during the last years and has supported this under the presidency of Holger Magel and the German bureau, which has pushed this development decisively. Now we vote for the President, the Council members, the Commission Chairs, the venues of Congresses and Working Weeks and other basic decisions like the financing system of FIG (which by the way always led to an engaged discussion in my national General Assembly concerning the amount of membership fees related to the benefit).  
It is a fact that the last President and Vice Presidents elections were extremely bare. So it is also a fact that the voting system directly impacts the future of FIG. FIG members are fully aware of this, regarding the emotional discussions and the pro and contra arguments. So it is obviously time for a rational discussion on this topic.
2. The benefit of the process of democratisation within FIG is quite clear: fair participation in decision making for all members. Democracy is basing on majorities and the protection of minorities as a principle of solidarity. Exactly this has to be reflected and at least established within the FIG structures.
3. The existing situation concerning the voting rights:
  - Countries as FIG members with a small amount of members, medium-size and large number of individual members, which are represented by only one national surveying association. They just have one vote, independently from the number of individual members. The only difference is the membership fees which is indeed related to the number of individual members (assuming that the number of members is reported correctly to FIG).
  - Countries represented by more than one organisation (small size, medium size and bigger organisations). Every organisation has one vote. At least those countries have more than one vote and again: we are voting on essential topics of the FIG agenda!

**GESCHÄFTSSTELLE**

Dipl.-Ing. Christiane Salbach  
Feierabendstraße 12  
79235 Vogtsburg  
Tel. +49 (0)7662 949-287  
Fax +49 (0)7662 949-288  
christiane.salbach@dvw.de  
www.dvw.de

**PRÄSIDIUM**

Prof. Dr.-Ing. Karl-Friedrich Thöne  
Dipl.-Ing. Christof Reik  
Dr.-Ing. Jens Riecken  
Prof. Dr.-Ing. Hansjörg Kutterer  
Dipl.-Ing. Eberhard Ziem  
Prof. Dr.-Ing. Jürgen Müller



4. The German (DVW) association policy is that DVW (and nobody else) is the one and only voice of the surveying community. We are representing the national and international interests of land administrators, land managers, valuers, of the public and the private sector and the chartered surveyors. Our model of serving the interests of the German surveying profession is integration in order to avoid fragmentation and separation of necessary interest policy.  
If I understand FIG policy in the past and for the future well, exactly this is also the FIG approach on the international level namely to be the integrative voice of the global surveying profession. Facing this goal of integration on the one hand and regarding the existing voting systems mentioned above, I am really in fear to what kind of discussion it will lead in the future if we do not reform it soon. There is indeed a running discussion in Germany whether it has a more favourable effect to be represented by several German organizations (valuers, chartered surveyors etc.) regarding the benefits, the influence and the representation of interests within FIG. I am really afraid of the national consequences of such a debate.
5. A solution which is respecting the orientation of FIG in accepting more than one organization of a country on the one hand and on the other hand helping those countries which follow the philosophy of only one integrating FIG member is a reform of the voting system.  
A new weighting of votes should be simple eg. 1/2/3 or 1/3/5 votes.  
It should base on the number of individual members of an association as the decisive key, because the members are the only ones who give as the mandate and the legitimation. Therefore DVW has appreciated very much the proposal of President CheeHai TEO as an excellent basis for a further discussion.
6. DVW is open for an inclusion of votes by members other than Member Association, e.g. concerning the Working Week or Congress venues.

*Karl-Friedrich Thöne*

Prof. Dr.-Ing. Karl-Friedrich Thöne  
DVW President