

SMART SURVEYORS FOR LAND AND WATER MANAGEMENT CHALLENGES IN A NEW REALITY



eWORKING WEEK 2021

20-25 JUNE

Louise Friis-Hansen

FIG General Assembly

Financial Report

20 June 2021

ORGANISED BY

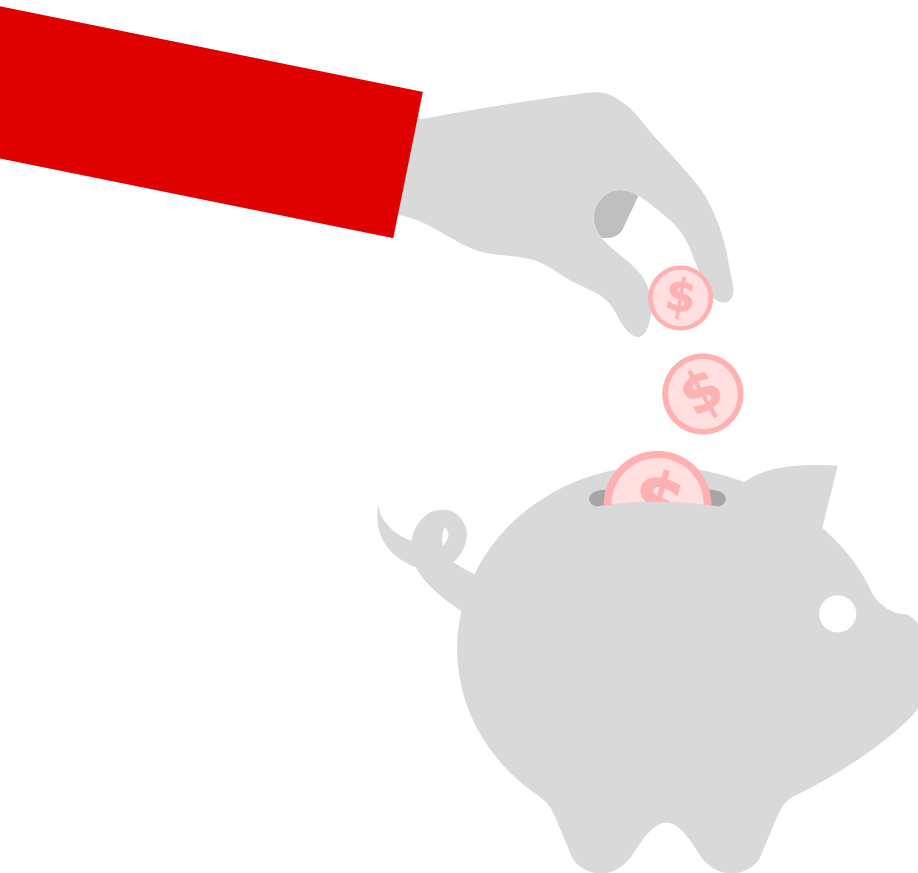


PLATINUM SPONSORS





AGENDA



OVERALL FINANCIAL SITUATION 2019-2021

- Adopt audited accounts 2019 and 2020
- Financial situation in 2021



BUDGET 2021-2024

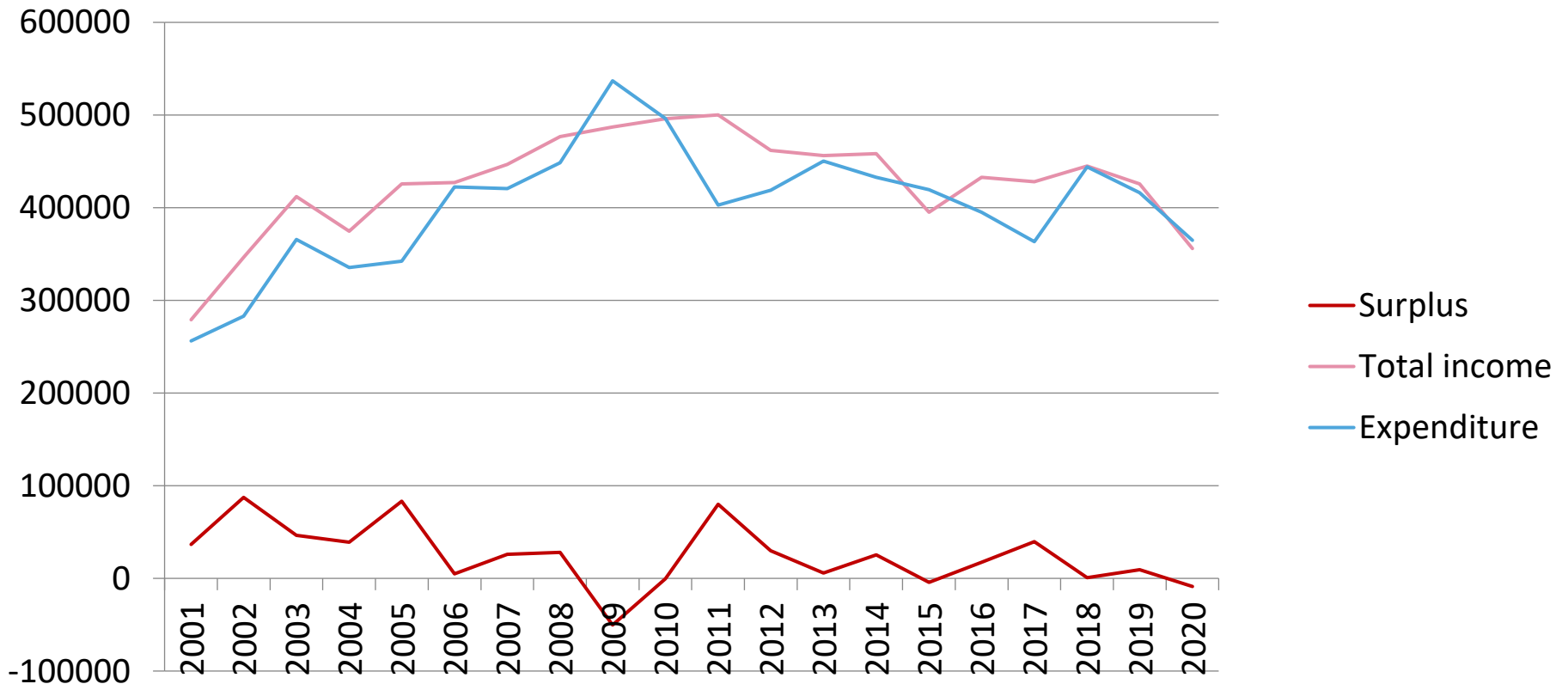
- Member Association Subscriptions 2022 and 2023
- Budgets for 2021-2024



REPORT FROM FIG OFFICE

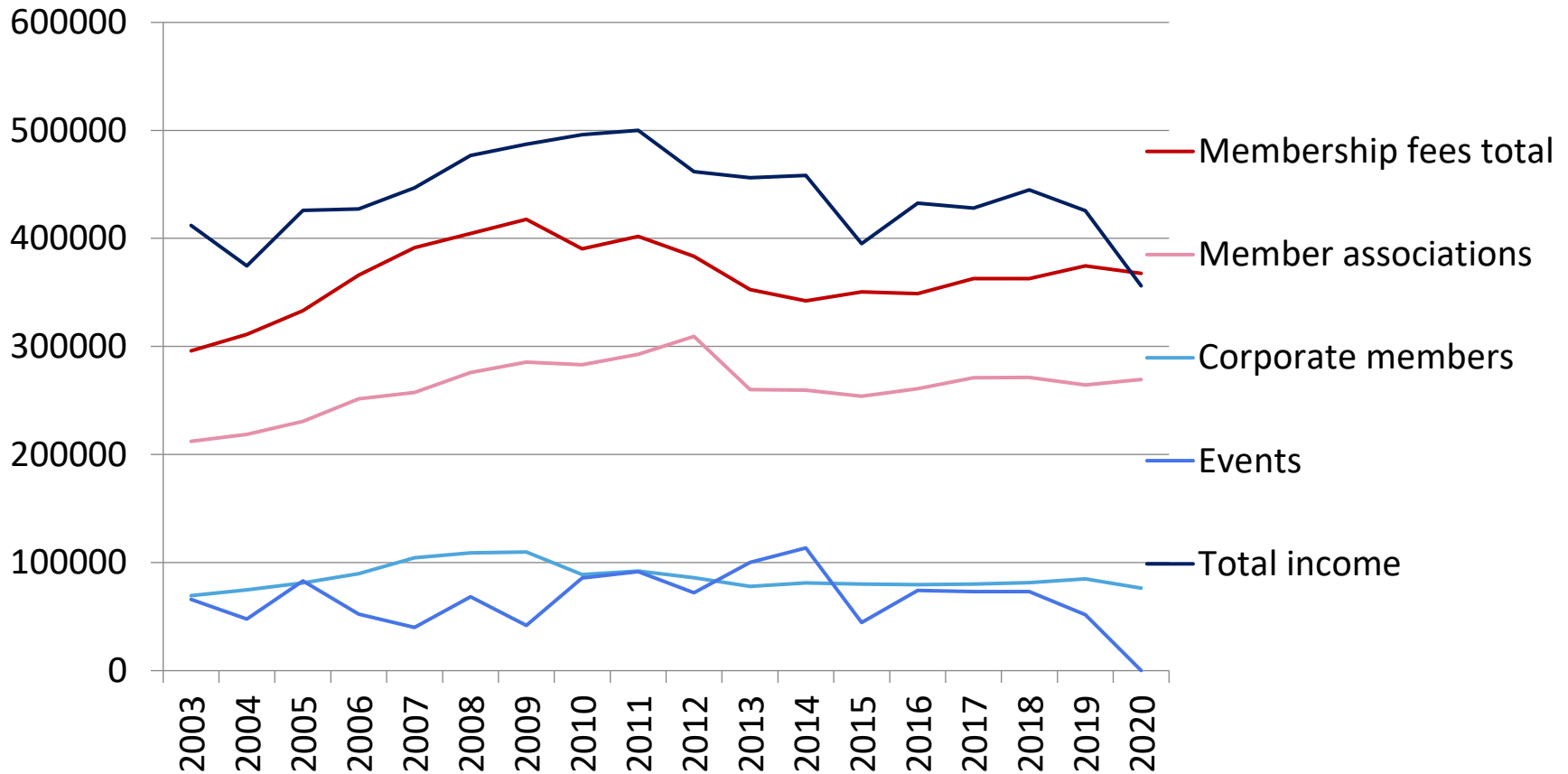


Overall situation and trends





Income over time





Financial performance

2019

- Financially good year – satisfactorily income and expenditure

2020

- Different – unusual
- Not comparable with other years

However

- Subscription income €15,000 lower than budget and almost 7,000 lower than 2019
- Corporate members – expected increase, but €10,000 decrease
- High write-offs (€21,000)
- Arrears – again increased
- Negative interest rate!



	2019		2020
Surplus ordinary activities	16,792 (budget 16,250)	✓	- 3,076 (Budget 5,750)
Key measure 1	MET		NOT met
Overall surplus	9,415 (budget 4,250)	✓	-8,675 (Budget 6.250)
Subscription arrears	91,000 (2018: 49,000)	↑	81,000 MA – 50,000
Total reserve	614,103		605,427
General reserve	128%		140%
- IT reserve	50,000		50,000
- Events reserve	50,000		50,000

Auditors' opinion –
true and fair view

Motion: that the
GA adopts the
audited accounts
for **2019 and 2020**





Subscriptions

- Subscriptions 2012-2018 – no change
- Subscriptions 2019: 7.1% increase
- Subscriptions 2020: 2019 level
- Subscriptions 2021: extraordinary 20% reduction for all members due to the COVID19 situation

2022 + 23 – suggestion to keep 2019 level ✓



Year	Per capita fee	Minimum fee	Maximum fee
2022 2023	<p>€4.80 per member up to a maximum of 5,500 members</p> <p>Member associations from countries listed by the World Bank as low-income economies or lower-middle-income economies shall pay €2.40 member up to a maximum of 5,500 members</p>	<p>25 members or €50 (whichever is greater)</p>	<p>5,500 members (€26,400)</p>

Budget



Key Measures:

1. Regular income exceeds expenditure each year
2. An overall surplus is returned over the 4-year period
3. General reserve is 90-100% of regular annual Expenditure (using 4-year averaging of expenditure)

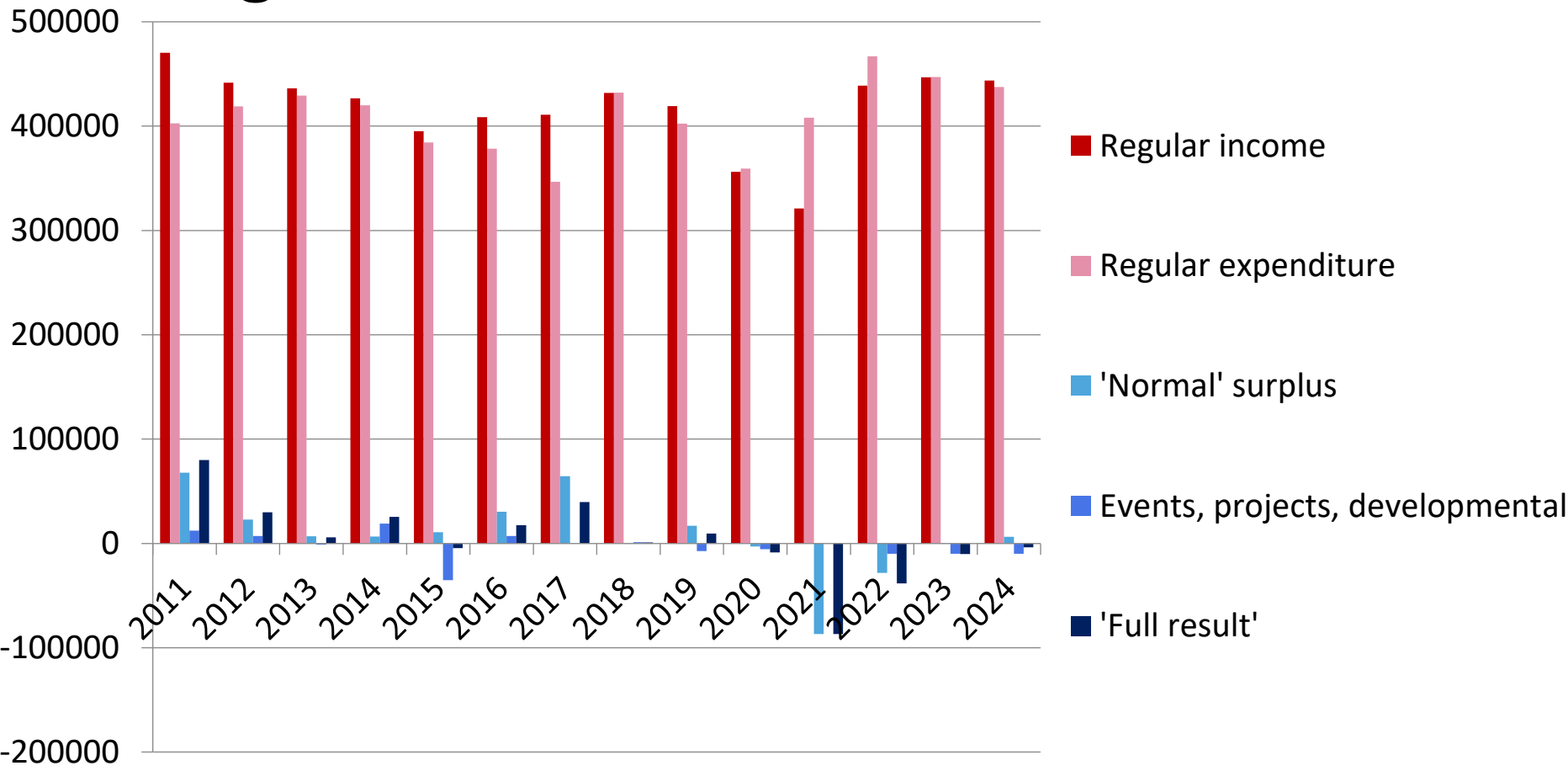


Key Issues

- Current economic situation – negative impact
- Subscription income 2021 **-20%**
- Subscription rates to remain stable
- Current healthy financial situation (key measure 3 high)
- Benefits of corporate members – how to attract?
- Conference income - uncertain
- Administrative costs monitored carefully
- **Budgeted deficits – Key measures NOT met**

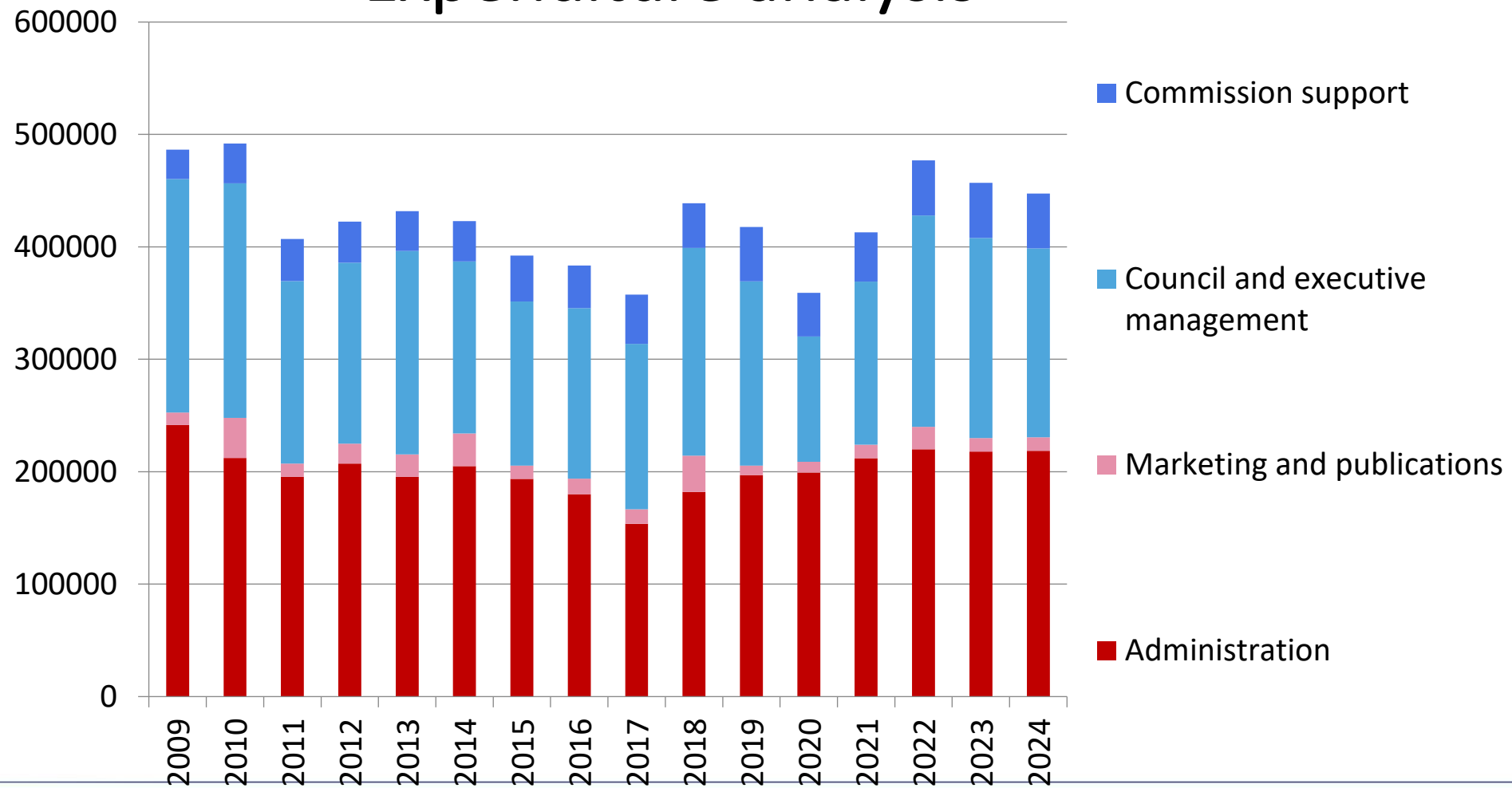


Budget overview



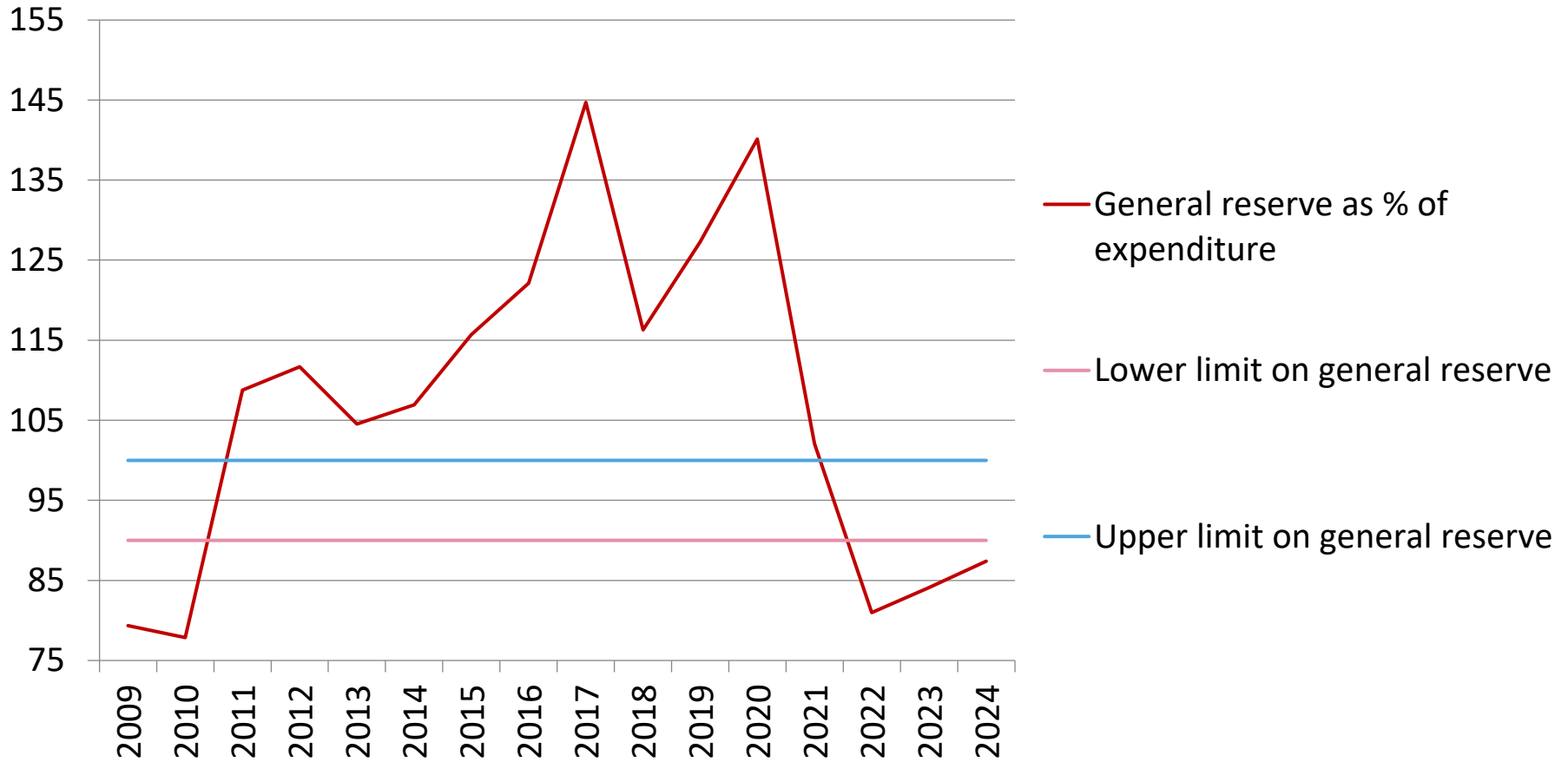


Expenditure analysis





General reserve





SMART SURVEYORS FOR LAND AND WATER MANAGEMENT CHALLENGES IN A NEW REALITY

WORKING WEEK 2021



FIG Office



Louise Friis-Hansen
Director



Claudia Stormoen Pedersen
Conference and Support
Manager
(Soon on maternity leave...)



Maria Bargholz
Finance and Administration

ORGANISED BY



PLATINUM SPONSORS



SMART SURVEYORS FOR LAND AND WATER MANAGEMENT CHALLENGES IN A NEW REALITY





Office tasks

- Membership matters
- Communication and promotion
- Development tasks (IT, strategy, office, etc)
- Support to council, commissions and others
- Finances
- Cooperation with partners such as UN
- Conference organisation – this year new experience with online conference