



# **Dr Diane Dumashie, FRICS FIG President**

**48<sup>th</sup> FIG General Assembly**

**Closing Remarks**

**Thursday 10<sup>th</sup> April 202**



# FIG: Practice and Knowledge network

- This means for
- People and Planet



# A Special Moment; SONGWOMAN MAROOCHY



Words of Wisdom, A gift of  
welcome and inclusion

On this land: Turrbal People, original  
inhabitants of Brisbane, and the Dippil  
people of the Sunshine Coast area.

# Know your place, Know your position.....



The Generation that combines the two?

- Inspiration in: Diversity and Inclusion:



- Passion with purpose
- Place and position
- People and land

Resilience comes from:

- Leave no one behind

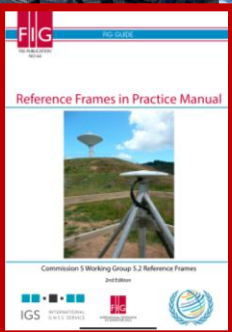
# 10 Active FIG Commissions- Passion with Purpose our Profession



# Diversity in our skills Stronger Together.

**Comm 5: Strengthening the Global Geodetic Reference Frame for Everyone**

**Comm 7: 3D cadastre continue to be the vision, and are increasingly realised: great cases from New York, New South Wales, Queensland and Malaysia and more.....**



# We've come together with passion and purpose

- Inclusion across the generations – engaging and being together



# Connecting Place and People Geo and Survey



- **Directors General Forum-** The interplay with Geo and land and survey and mapping
- **Presidents meeting** - Sustainability Framework

# Our Geo & Survey Profession

**G**  
E  
O  
S  
P  
A  
T  
I  
A  
L

E  
O  
D  
E  
S  
Y

A  
R  
T  
H

B  
S  
E  
R  
V  
A  
T  
I  
O  
N

U  
R  
V  
E  
Y  
I  
N  
G

O  
S  
I  
T  
I  
O  
N  
I  
N  
G

U  
V  
S

I  
M  
I  
N  
G

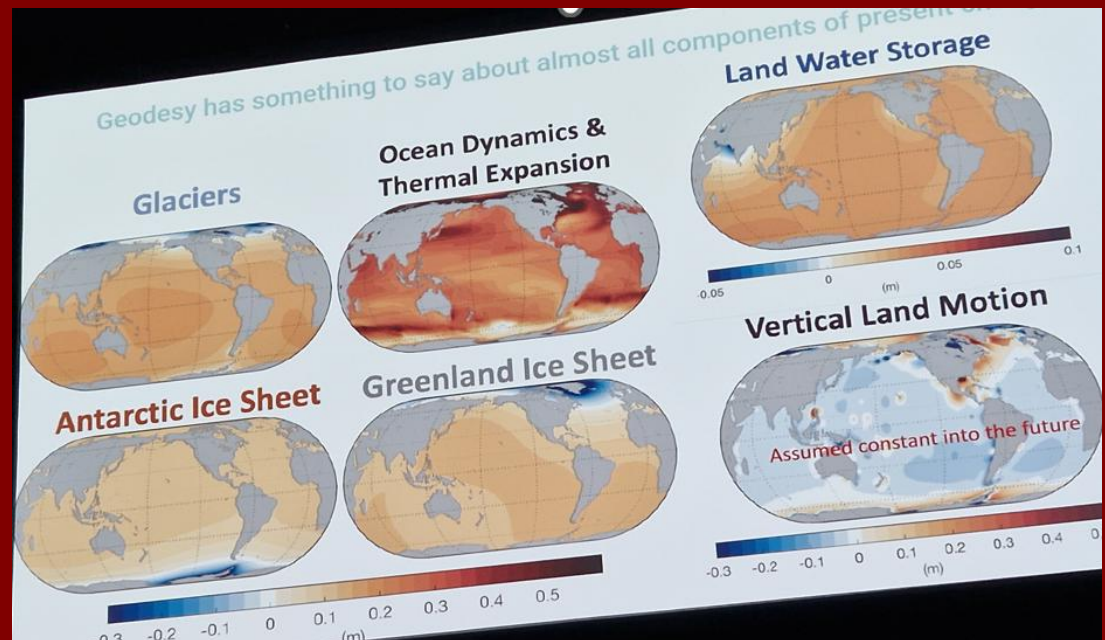
G  
S

I

L  
I  
D  
A  
R

# Diversity across the Geographies

- From space, mountains to sea... and everything in-between
- Glaciers, SIDS.....

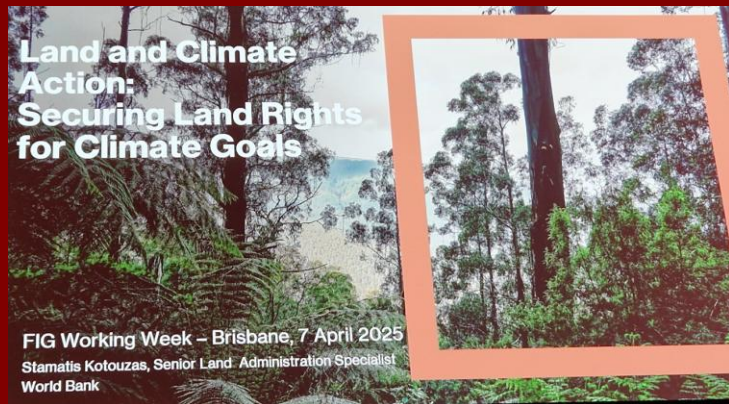


# SIDS- FIG AP/CDN Network

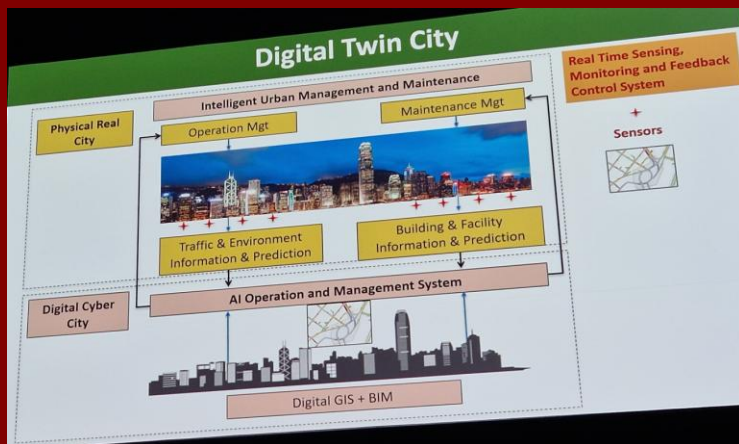


- **Global to Local stories Progress through Partnerships**
- working with the Global to local working with the community including federal governments and the scientific community
- C5, IGS, IAG and the UN-OOSA ICG.
- C7 Land Administration

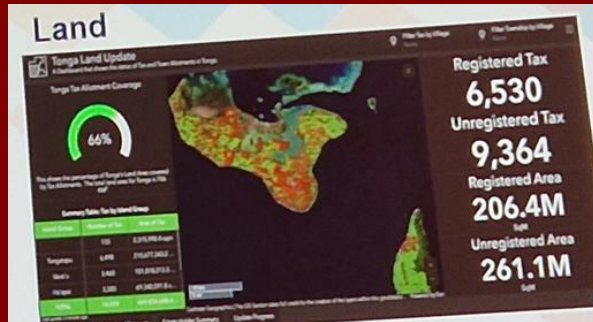
# .....Diversity across Urban and Rural Places



- Recognition growing of the wisdom of Indigenous communities for the sustainability of our planet
- Urbanisation; the statistics..... acknowledging the imperative of Smart technology, Big Data, AI and urban analytics
- C10: next generation infrastructure & a journey from derelict to digital



# Land Governance is The land to People relationship



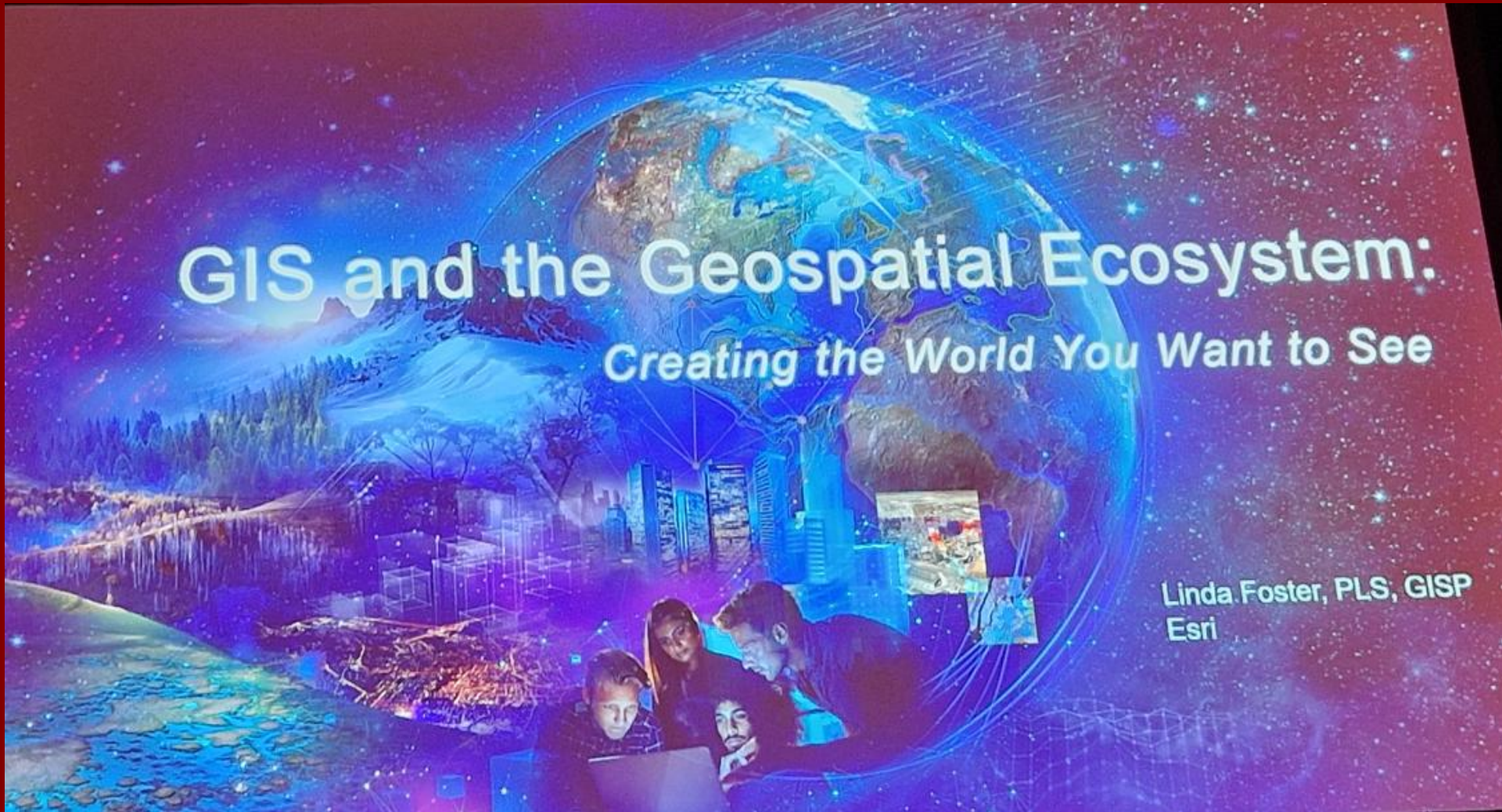
## Value of linking climate and people to land

- **Tonga** –(People of the ocean): it is no longer safe where we live & build
- **Trinidad & Tobago**- Building resilience through land policy
- **C7 Land administration data**, integrated via NSDIs is helping disaster and emergency response happen in real time – with real results
- **C4- Advancing Hydrospatial Intelligence: Innovation and Resilience in the Digital Era**  
c4

# Working Practices: Navigating the Technology and Data era .....

## GIS and the Geospatial Ecosystem: *Creating the World You Want to See*

Linda Foster, PLS, GISP  
Esri



# ...With Data management; but mind the gap



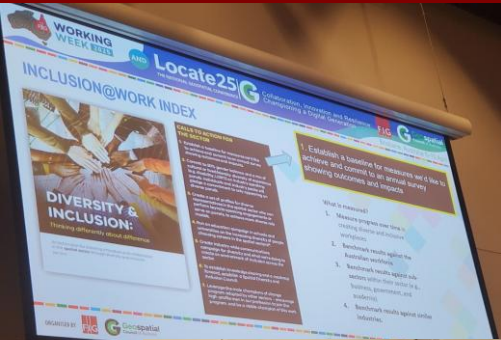
- Upstream satellite data acquisition and down stream data use

But Data...

- Sharing? Ineteropobility?
- poverty in communities?
- Security? Ethics? Transparency?
- Data Governance, standards rolled out



# People- Diversity and Inclusion



- **Creating a workplace where everyone, regardless of their neurotype, feels valued and supported is crucial to fostering innovation and collaboration**
- **Champions this week for**
  - Women and Men
  - Neurodiverse
  - First Nations



# Inclusive Workforce SDGs are a gift



and embrace it?

**“We need to think about CSR in a whole new strategic perspective”**

**The SDG's is (one) the tool, to re-tell the story about our profession, and the social responsibility we take**

# Resilience: FIG Brisbane Legacy



## FIG and 'She Maps'

- Kids to Place
- Diversity and Inclusion & SDG's Ormiston College



- Queensland Govt and FIG
- Govt to Practitioners
- South Bank Brisbane Survey Mark

# Resilience: FIG contribution Agenda 2023...



TF SDG working to embed our community practices:

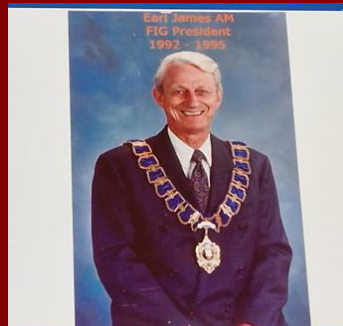
- Crucial Role of Government
- Contribution of the Private Sector
- Collaborative Professional Education



# Resilience:

## Our Values come out of our stories

(Commission 9)



With respect,

- We acknowledge, and
- We stand on the shoulders of those who are
- Custodians of past Knowledge and practices
- All of our Stories

# And we play...



# We Champion....



WORKING  
WEEK 2025

AND

Locate25 G  
THE NATIONAL GEOSPATIAL CONFERENCE

Collaboration, Innovation  
and Resilience  
Championing a Digital Generation

Brisbane, Australia 6-10 April

Innovation, it's the spark we need,  
Collaboration plants the seed,  
Resilience in the face of doubt,  
At FIG and Locate25, we'll figure it out!

Organized by:



Geospatial  
Council of Australia



# My Thanks to

You made it happen

- Tireless efforts of the LOC
- Dear members
- ACCO
- Partners And Sponsors



**Our Journey is far reaching**  
**Digital Generation:**  
**Combines centuries of knowledge with**  
**Modern solutions**



# Thank You

- [WWW.fig.net](http://WWW.fig.net)
  - President
    - FIG: Dr D Dumashie
- Ddd.president@outlook.com

