

LADM

A blueprint for enterprise level land administration systems
Séamus Gilroy, Country Manager, Ireland

Our vision.....



The number 1 choice

for spatial big data management.

Enabling the capture, maintenance and integration of multi-petabyte spatial databases.



We share with Oracle a vision of delivery innovative spatial solutions built on an enterprise architecture.



Our History



- Founded in 1969
- Headquarters in Cambridge, UK
- International offices in Australia & Ireland
- Recently acquired the STAR-APIC group with offices in France and Belgium.

Our Business

A specialist solutions and services provider to data providers, government and utilities



Our track record in spatial data standards.....



- 1Spatial is a Technical Member of OGC and has been involved in a number of key projects.
 - Contributor to original WMS and WFS specifications
 - Dr Paul Watson (1Spatial CTO): Contributor to the GML specifications (topology in GML 3.0 and WG for GML 3.2.1).
 - Founder and Chair or Co-Chair of the OGC Data Quality Working Group
- Oracle has extensive involvement in both OGC and ISO and supports these standards in many products reflecting the importance of standards compliance to the company.
 - OGC Founding Members and active on Board of Directors
 - WG Chair (Simple Features SWG, GeoSPARQL SWG, Geometry DWG, ...)
 - John Herring is involved in OGC and is chair of ISO TC211 IMWG helping ensure that industry and de jure standards are in line.

Good standards improve things....



ISO Standards for dimensions and materials for nuts and bolts



Delivers maximum flexibility and freedom with predictable result for consumer.



But sometimes standards fail to deliver real benefit....



Industry standards focused on market dominance



Winner takes all approach
Costly obsolescence for consumers.

Where does LADM fit in?



Important to engage at the right level:

- **Conceptual Data Model (CDM)**
A map of the concepts of interest in a domain and the relationships of significance between them.
- **Logical Data Model (LDM)**
A technology neutral representation of an organisation's data, organised in terms of entities and relationships.
- **Physical Data Model (PDM)**
A physical implementation of an LDM subject to the constraints of a specific DBMS technology.

Ideal result is adoption of a single universal **LADM** CDM, leading to multiple compliant regional LDMs, which are then deployed as organisation or application technology specific PDMs .

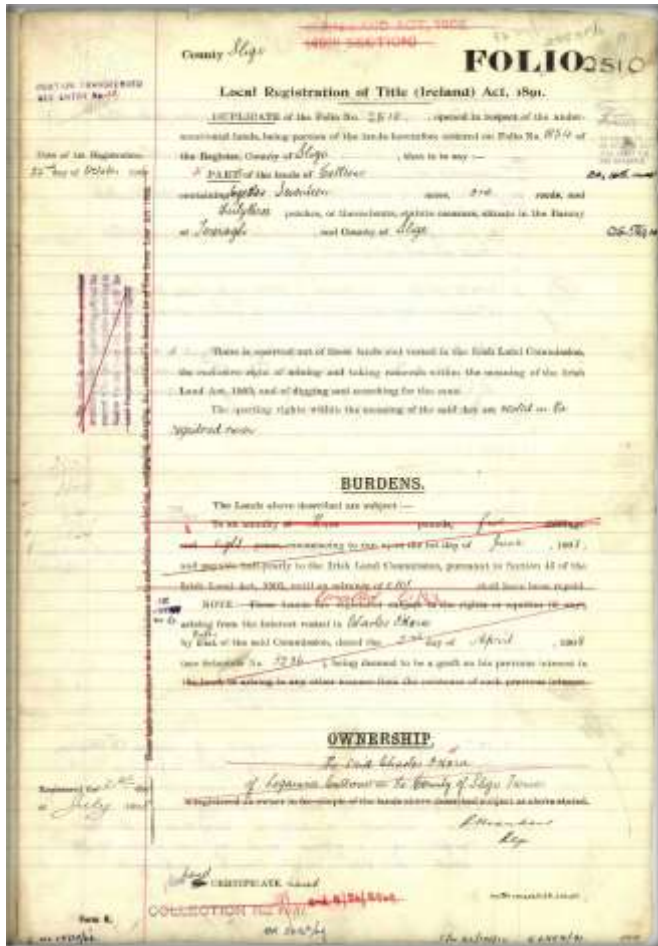
PRAI Land Register

Land Administration Example

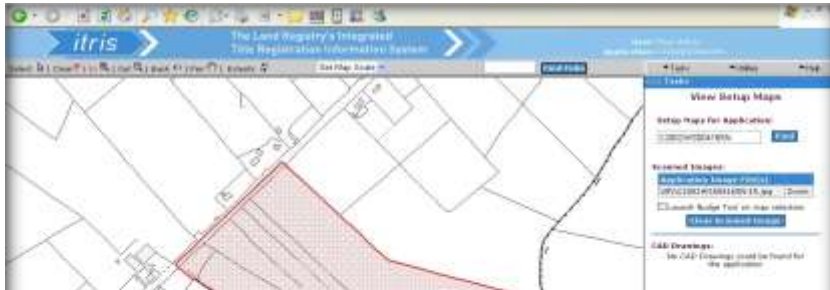
- A system of registration of title to land carrying a State Guarantee
- A Public Register established in 1892
- 1.8 million titles covering 2.5 million registered land parcels
- Over €400 billion worth of housing indemnified in Land Registry
- 625 staff dealing with 450,000 register changes per annum
- *Mission: 'Safeguarding the Legal, Social and Economic Fabric of Property Ownership'*



Transition from manual document editing and map production....

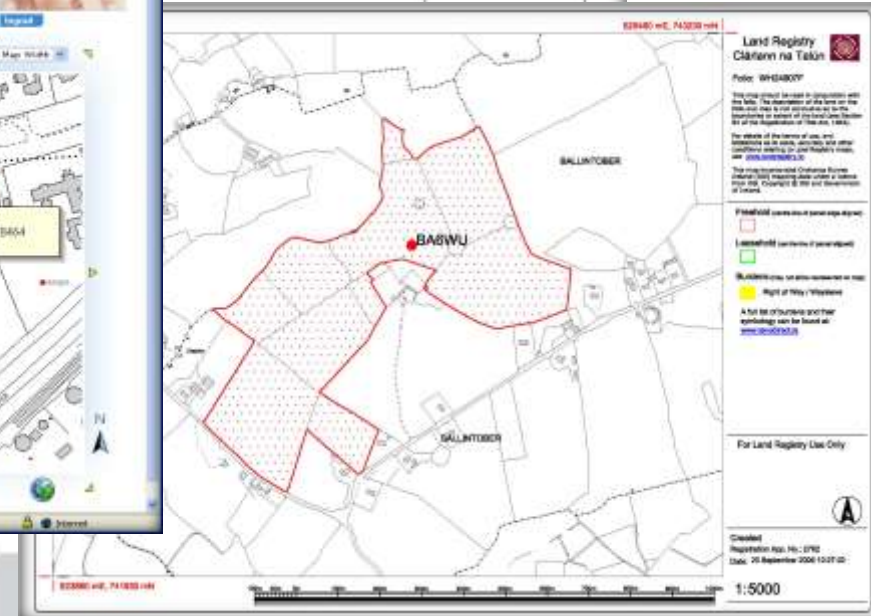
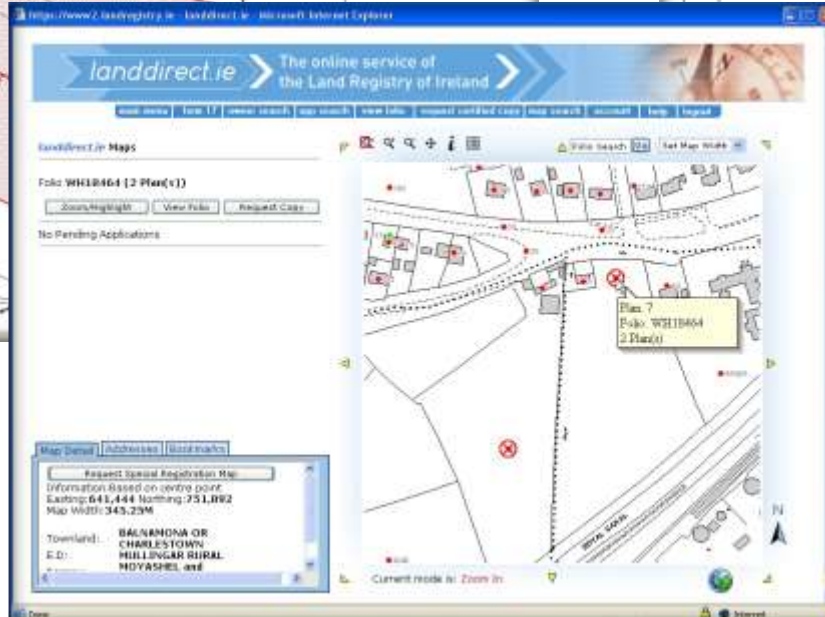


....to digital register maintenance,
online query and automated
document/map production.



Land Registry
County **Sligo** Folio **999999F**
Register of Ownership of Freehold Land
Part 1(A) - The Property
For parts transferred see Part 1(B)

No.	Description	Official Notes
1	A plot of ground being part of the fowland of ASBRYCHRYN NORTH and BARRY of CARNEY shown as Plot (a) 9999, 9999 edged RED on the Registry Map (OZ HOJ Ref (a) 23/12). The Registration does not extend to the stone and minerals.	From folio 999999F



Delivering Public Access to all Land Register Data



Getting Started Search Print View Basket

Base Layer

- Osi Map
- Osi Orthophotography
- Osi Hybrid

Land Registry Overlays

- Burdens
- Subsidiary Interest

Property Details

Folio Number	WH722F
Title Level	Freehold
Area of selected plans	0.10 hectares
Number of Plans on this folio:	1

[Add to Basket](#)

*PRA Boundaries and Plan Area are not conclusive. See Section 6(2)(i) of Registration of Title Act 2008 and Rule 9(1) of the Land Registration Rules 1972 as substituted by Land Registration Rules 2009.

Current Location

Townland Petitswood

Barony Moyashe And Magherademon

County Westmeath

Scale = 1 : 1500

XY: 644878, 753325

An iDentis Clientship Machine
The Property Registration Authority

Key DMapS System Requirements 1spatial YOUR WORLD SMARTER

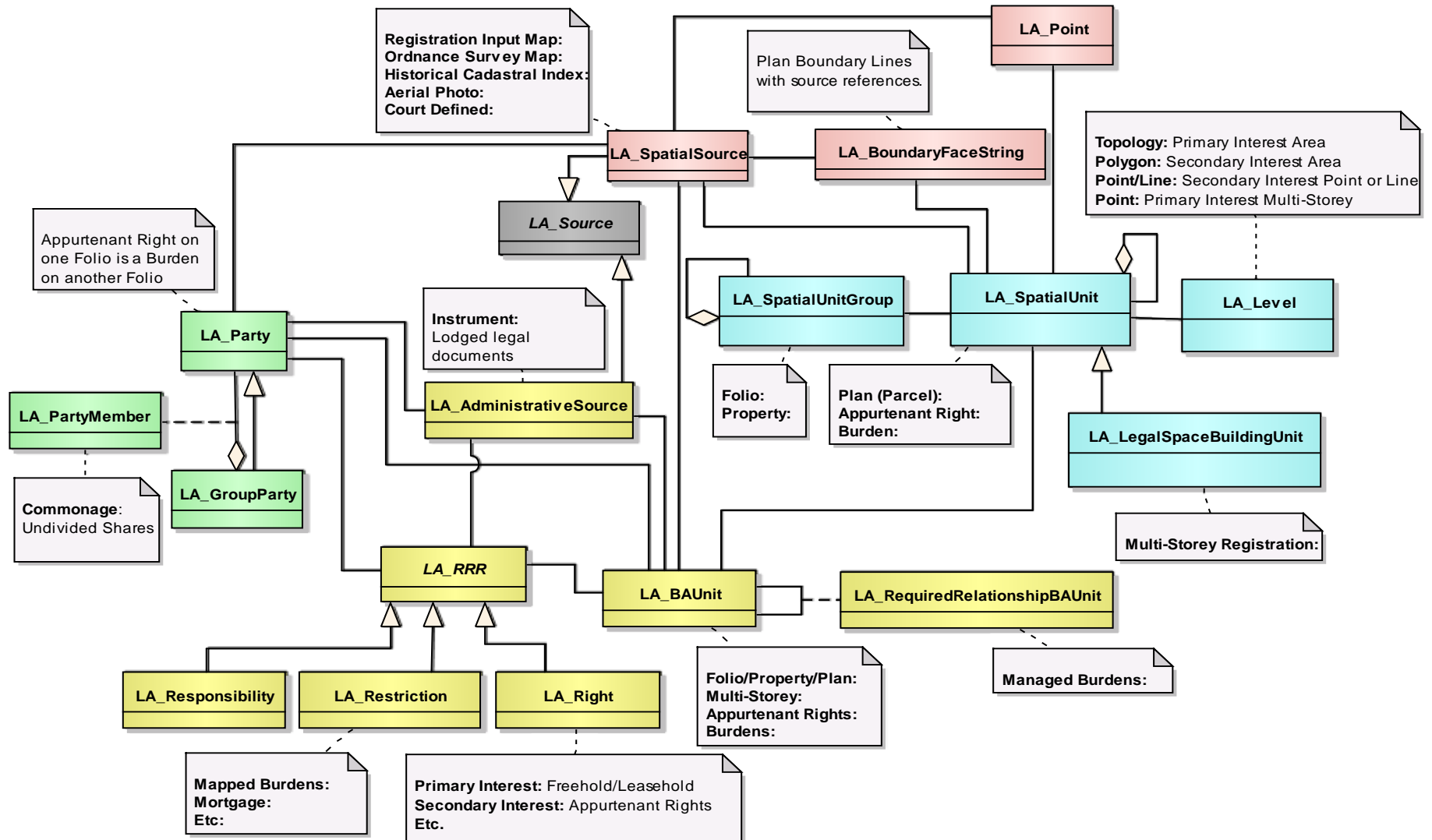
- Integrate with existing ITRIS (Titles) and DIMS (Documents) systems
- Build on OSi national reference large scale vector map base.
- Implement Business and Topology Rules for Plans
 - No overlap by Level of Title
 - Freehold, Leasehold, Sub-Leasehold, etc
 - Shared Boundaries
 - Relationship between Title Levels
 - E.g. Leasehold is a Burden on the Freehold
- Mappable Burdens and Appurtenant Rights
 - Capture and manage relationships for Right of Way, Pipeline, Well, Turbary, etc
- Allow for:
 - Commonage (Undivided Shares)
 - Development Schemes
 - Multi-Storey Developments
- Deliver a Future-Proof framework

Mapping of ITRIS DMapS to LADM



spatial
YOUR WORLD SMARTER

class LADM_ITRIS-DMapS



Ordnance Survey Ireland

Enterprise Solution Example



History



- Established in 1824 as military unit with first civilians only in 1970s.
- Ireland was first country in the world mapped at 6" to 1 mile in 1846.
- Became a separate state body in 2002.
- Approx. 320 staff in original Dublin HQ in Phoenix Park and in 6 regional offices.



Ordnance Survey Ireland 1st Generation Mapping

Lithographic Stone



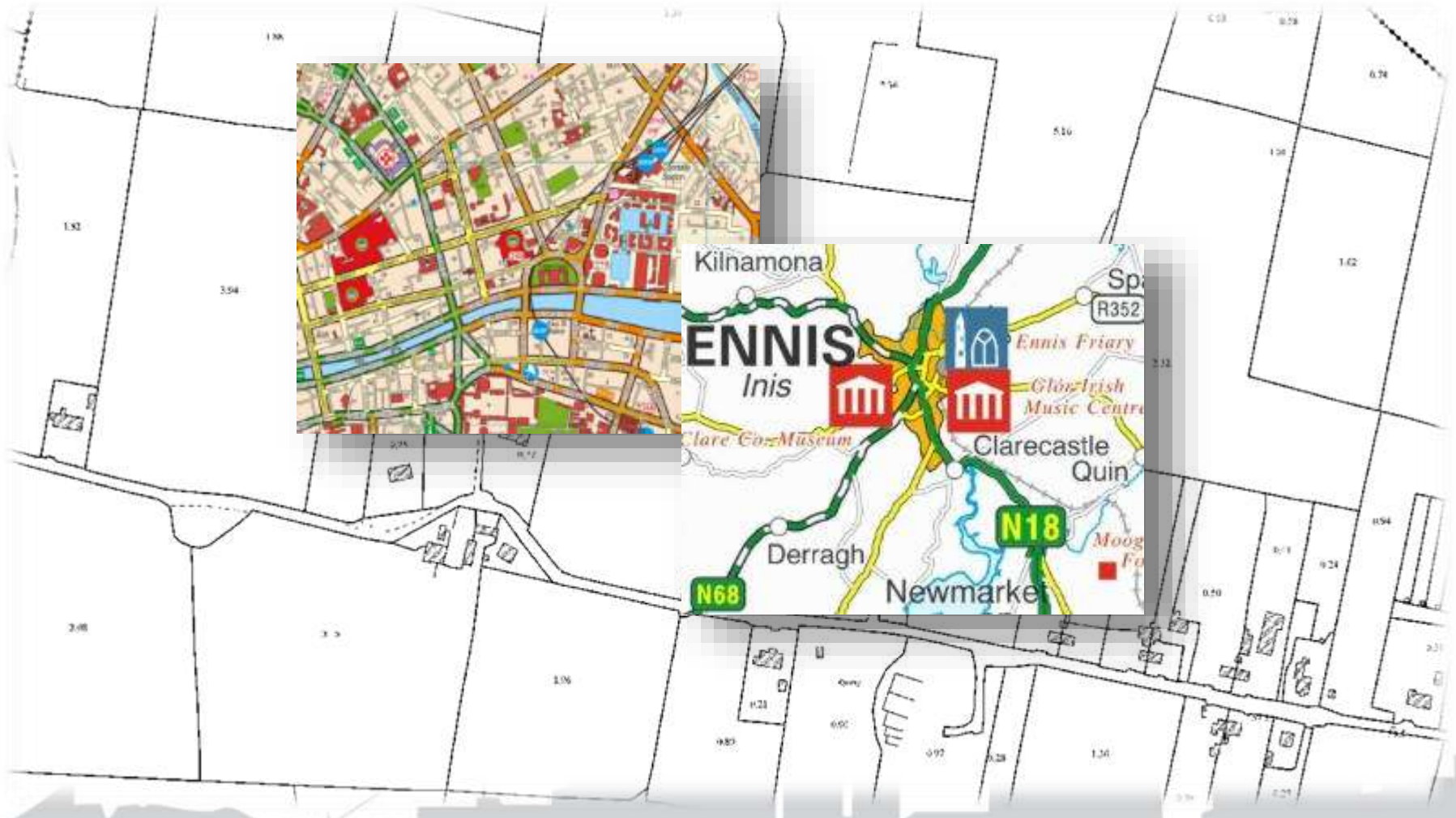
Copperplate Printing



Ordnance Survey Ireland 2nd Generation Mapping



Cartographic Tiles of Vector Data at Multiple Scales



Ordnance Survey Ireland Next Generation Mapping



Multiple Data Sources, Capture Methods and Outputs



Ordnance Survey Ireland Next Generation Mapping



- The most significant revision to OSi's data creation and management practices in over 30 years.
- Next generation national core reference data.
- Foundation for National Spatial Data Infrastructure
- Seamless real-world feature data model.
- Inter-Feature References
- Multiple Geometries per Feature



Ordnance Survey Ireland Next Generation Mapping



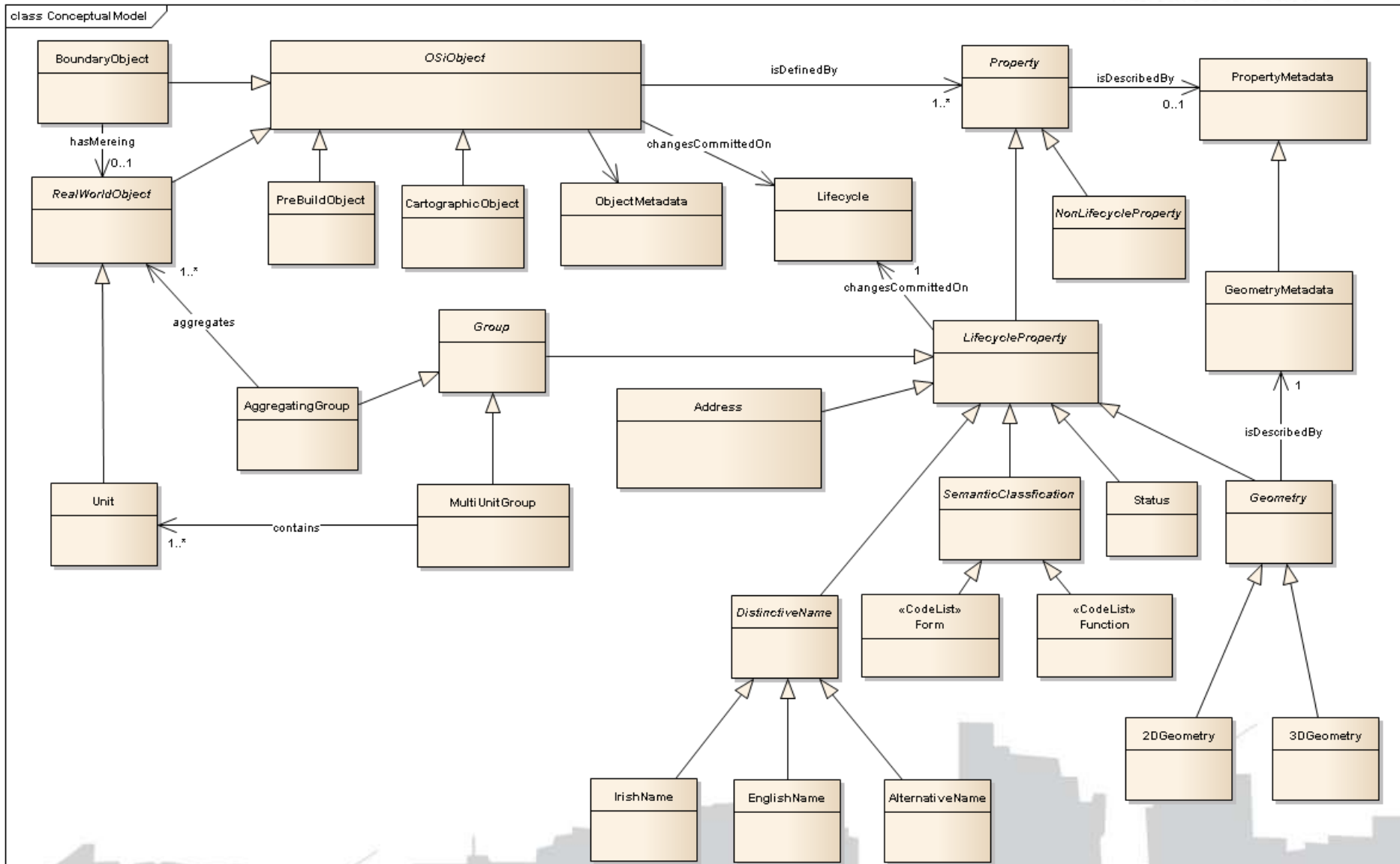
Drivers for enterprise solutions



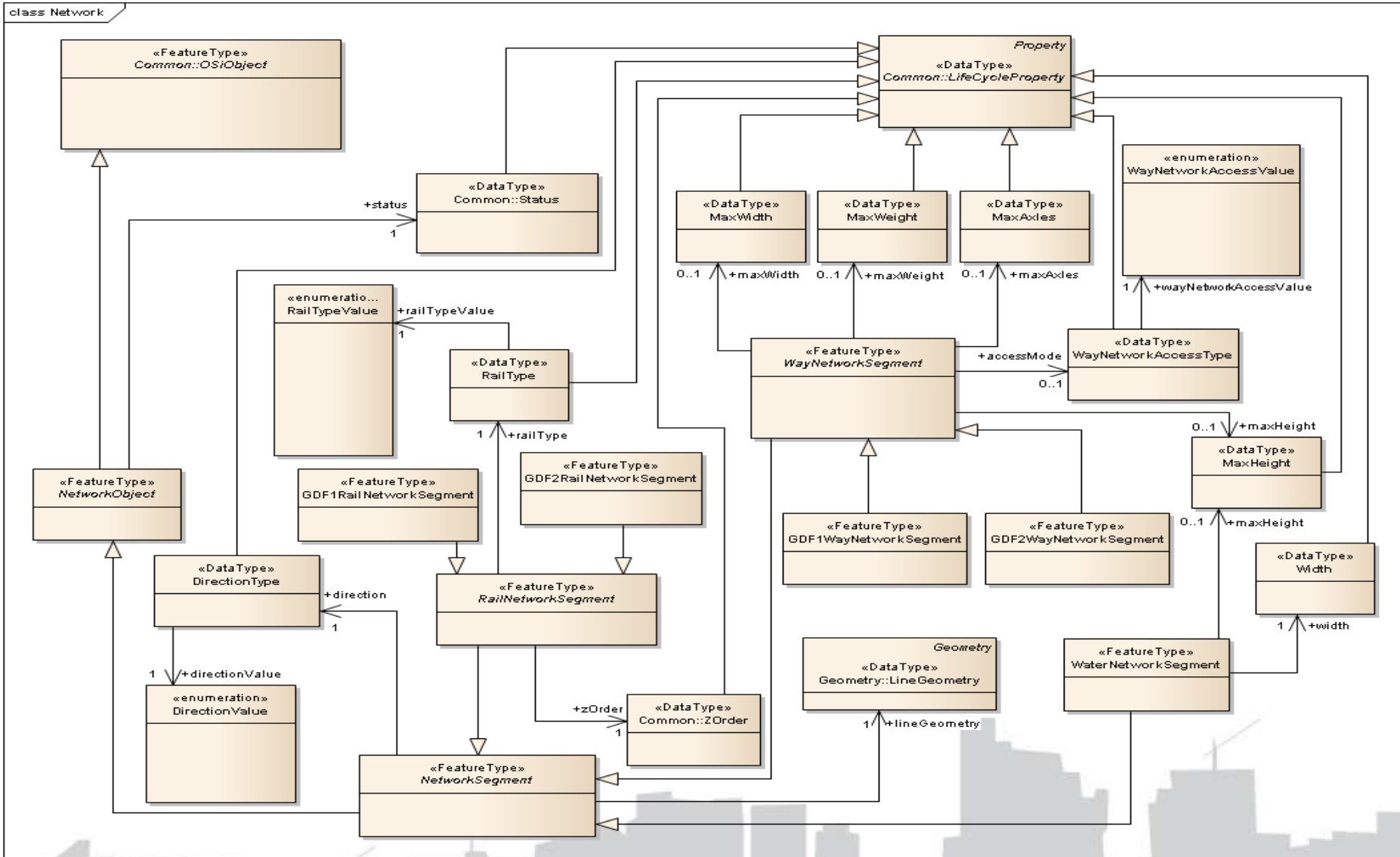
- National level implementations.
 - Very large spatial databases.
 - Distributed operations.
- Rich and complex data models.
 - Representing real world objects and their relationships.
 - Extensible to support concepts not yet defined/identified.
- Demand for “Fit for Purpose” data.
 - Data must be trusted.
 - Data must be correct.
 - Data must be up to date.
- The data does not exist in isolation.
 - Change driven by external processes.
 - Data consumed and/or referenced by others.
 - Capture Once – Use Everywhere



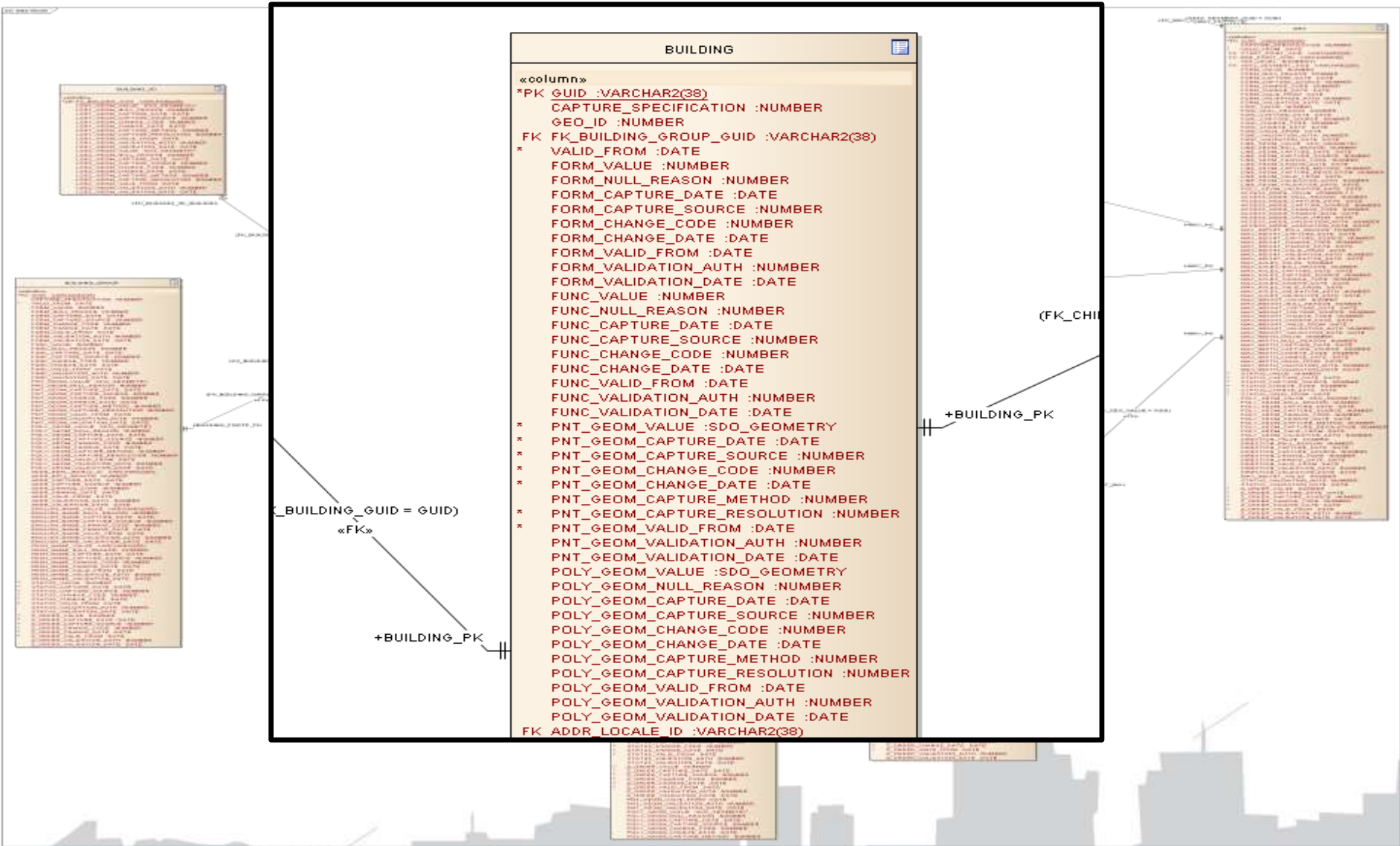
Conceptual Data Model



Logical Data Model



Physical Data Model



The Enterprise Data Management Challenge



PLAN

MAINTAIN

PUBLISH

1 spatialmanagement suite



ORACLE®
DATABASE
READY

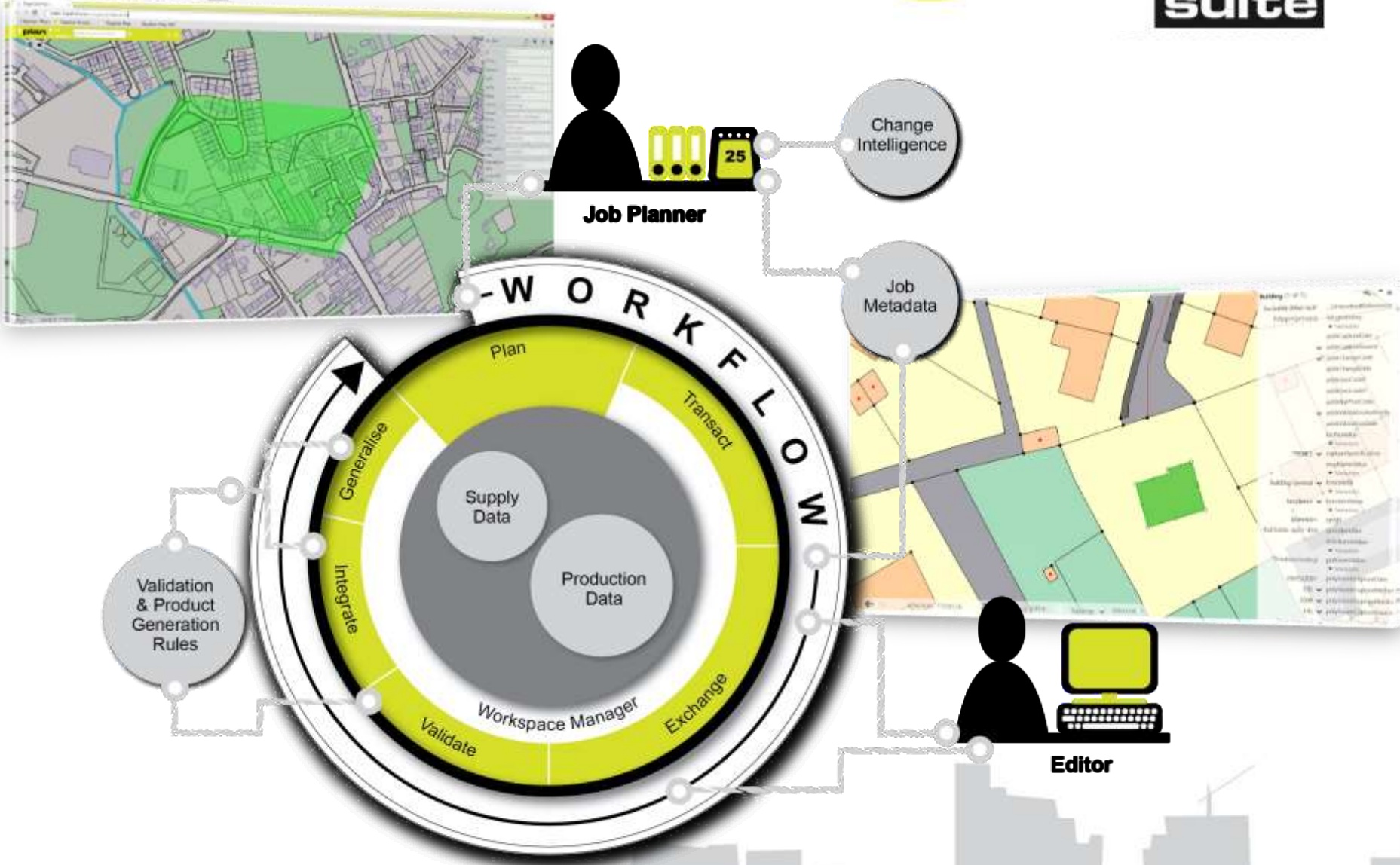
ORACLE®
EXADATA
READY

ORACLE®
EXALOGIC
READY

ORACLE®
LINUX
READY

ORACLE®
WEBLOGIC
READY

1 spatial management suite



Potential Impact of LADM in Ireland



- **New national Property Agency for Ireland**
PRA, OSi and VO are being merged to a single national agency. This will require a new unified CDM. LADM can be a key influence.
- **Key business drivers for next generation Land Administration**
 - **Digital by Default:** Move away from paper. Standards based approach will provide traditionally conservative legal profession with confidence to adopt.
 - **Make data freely available and usable:**
Not about the cost of data.
Consistent CDM is the key to reuse with confidence.
Transformation of PDM not an issue if CDM is well understood but highly risky if not.



Thank You

Séamus Gilroy, Country Manager, 1Spatial Ireland

seamus.gilroy@1spatial.com