

A Standards Regime

-academic, technical, professional - that works in New Zealand

Brian J Coutts FNZIS FRICS

Academic

- Entry to the profession requires a 4 year degree;
- Entry to the degree programme is decided on academic performance in the 1st year at University;
- Entry to university is based on attaining “credits” at final year secondary school

Technical

Cadastral Surveyors Licensing Board

- Established by statute;
- Required to set standards for cadastral **surveyors**;
- Surveyor-General sets standards for cadastral **surveys**;
- Standards established in consultation with NZIS;
- Standards require current competence;
- Licensed Cadastral Surveyor

New Zealand Institute of Surveyors

- A voluntary incorporated body;
- Sets its own standards of entry
 - A written law examination
 - A series of professional interviews with an Admissions Panel
- Member, New Zealand Institute of Surveyors (MNZIS)

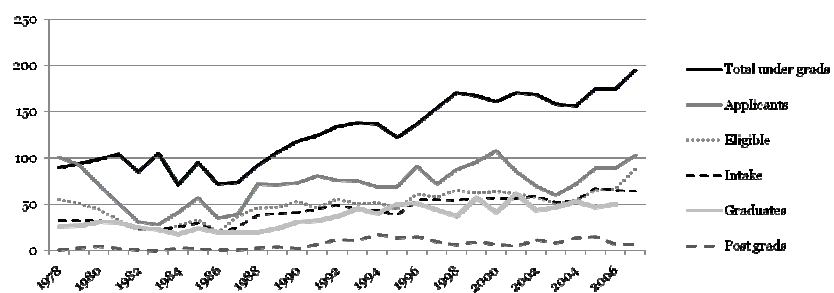
Professional

- Following regulatory restructuring in 2002, NZIS created the title
- **Registered Professional Surveyor.**
- Minimum three years after MNZIS
 - must be a member,
 - must submit a portfolio of professional work,
 - must commit to continuing professional development,
 - may choose from 10 categories of specialty.

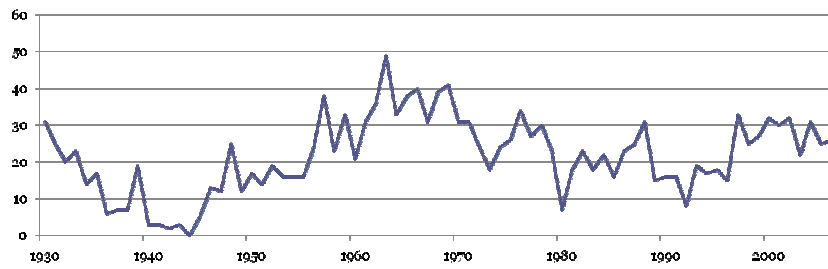
In the context of integrating the generations -

- Why do I say that it works?

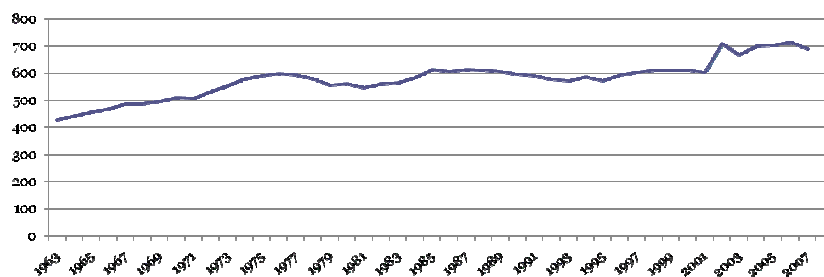
Student numbers - 1978 to 2007



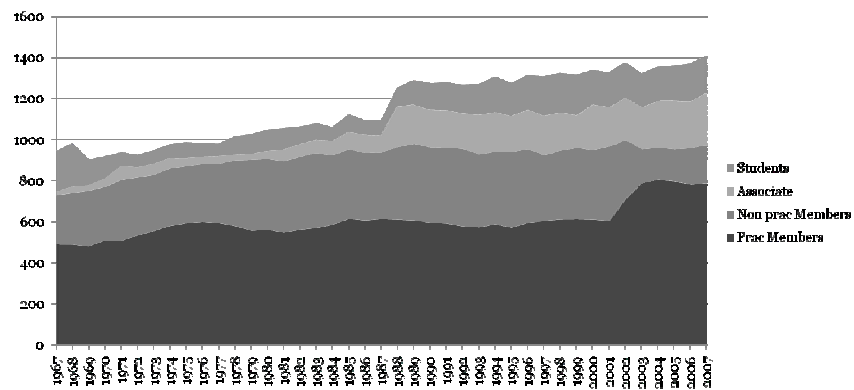
New registrations or licenses per year from 1930



Total number of licensed (registered) surveyors since 1963



NZIS membership by grades



In the context of integrating the generations -

- Why do I say that it works?
 - student numbers continue to increase;
 - the number of licenses issued continues to increase;
 - the NZIS membership continues to increase;
 - it is accepted by the students, the profession, the public and by government.
- It works for us!