



# PGSC

Pacific Geospatial and Surveying Council

SPC PGSC Partnership Desk

Email: [pgsc@spc.int](mailto:pgsc@spc.int)

Webpage: <http://gsd.spc.int/pgsc>



May 2018

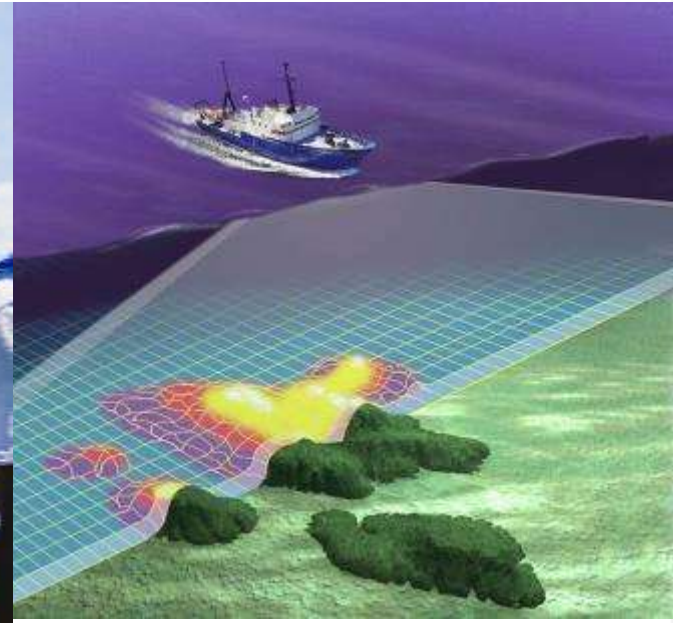


Climate and Oceans Support  
Program in the Pacific

- Independent regional body advancing geospatial and surveying standards and capacity
- Established in the margins of the GIS/RS User Conference in November 2014
- Governed by the PGSC Charter endorsed by 11 Pacific Island governments
- Supported by PGSC Partnership Desk (SPC)



*Sustainable development in the Pacific enabled by world class geospatial information and surveying services*



Pacific Island survey and geospatial services, including hazard mapping, urban planning, cadastre mapping, hydrography, and other geospatial requirements for sustainable development, are sufficiently resourced to respond to member country priorities.





Cook Islands



Vanuatu



Fiji Islands



Samoa



Marshall Islands



Solomon Islands



Papua New Guinea



Kiribati



Palau



Tuvalu



Nauru



Tonga



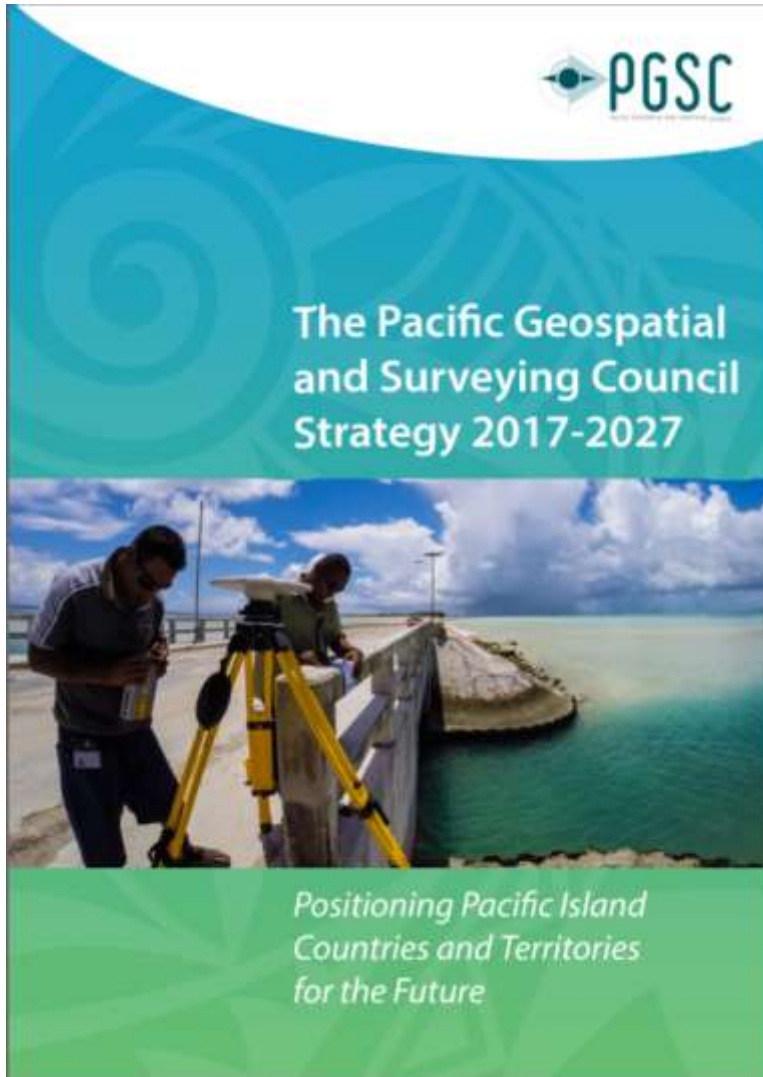
Niue



Federated States of Micronesia

## Regional and Global partnerships





- 10-year regional plan for developing geospatial and surveying capacity
- Good Coordination
- Good Communication
- Good Collaboration process
- Sharing Resources
- And applications of location information through regional and global partnerships.



**Tonga's Prime Minister Mr Samiuela 'Akilisi Pōhiva launches the world's first regional strategy for surveying and geospatial capacity development on 10<sup>th</sup> April 2018 in Nuku'alofa, Tonga.**

Also present Australian High Commissioner, New Zealand High Commissioner, Japanese Consulate, UNGGIM, Pacific Island Country States and the Pacific Community

# Purpose



1. To demonstrate the critical nature of geospatial and surveying information and services and the development and maintenance of these services in the Pacific region;



2. To articulate the collaborative aspirations of the region's geospatial and surveying professionals in advancing capacity;



3. To guide the development of sustainable geospatial and surveying information and services in Pacific Island Countries & Territories, and;



4. To serve as an entry point for engagement with internal and external partners.





## 1. Leadership and Visibility

The PGSC enables regional leadership, guidance and support for members to engage stakeholders and the community on geospatial and surveying activities.

## 2. Standards and Technology

Countries across the region adopt a modern Geodetic Reference Frame (GRF) and improved technology underpinning geospatial systems and applications.

## 3. Sustainability

Geospatial and surveying activities at the national and regional level are supported by a diverse and sustainable resource base.

## 4. Capacity Building

The geospatial and surveying community is self-reliant with a culture supportive of learning innovation and gender equity.

# Selected Indicative Activities

- **Support PGSC members for national capacity priorities and development plans**
- Develop communication plans for the PGSC Strategy for international stakeholders and agencies for assistance and support funding
- **Provide technical support on geospatial and surveying matters to member state officials**
- Engage stakeholders and promote the value of geospatial information and surveying to member state officials
- **Promote the value of geospatial information and surveying among government decision-makers**
- Support the design of national plans to maintain or modernise geodetic infrastructure for the national Geodetic Reference Frames
- **Review and support the strengthening of national legislation relevant to geospatial information and surveying**
- Identify and coordinate access to existing and new external funding sources for national and regional activities
- **Organise professional training or career development opportunities with potential partners**

*Monitoring &  
Evaluation*



**PGSC**

Pacific Geospatial and Surveying Council



# Selected Strategy Outcomes

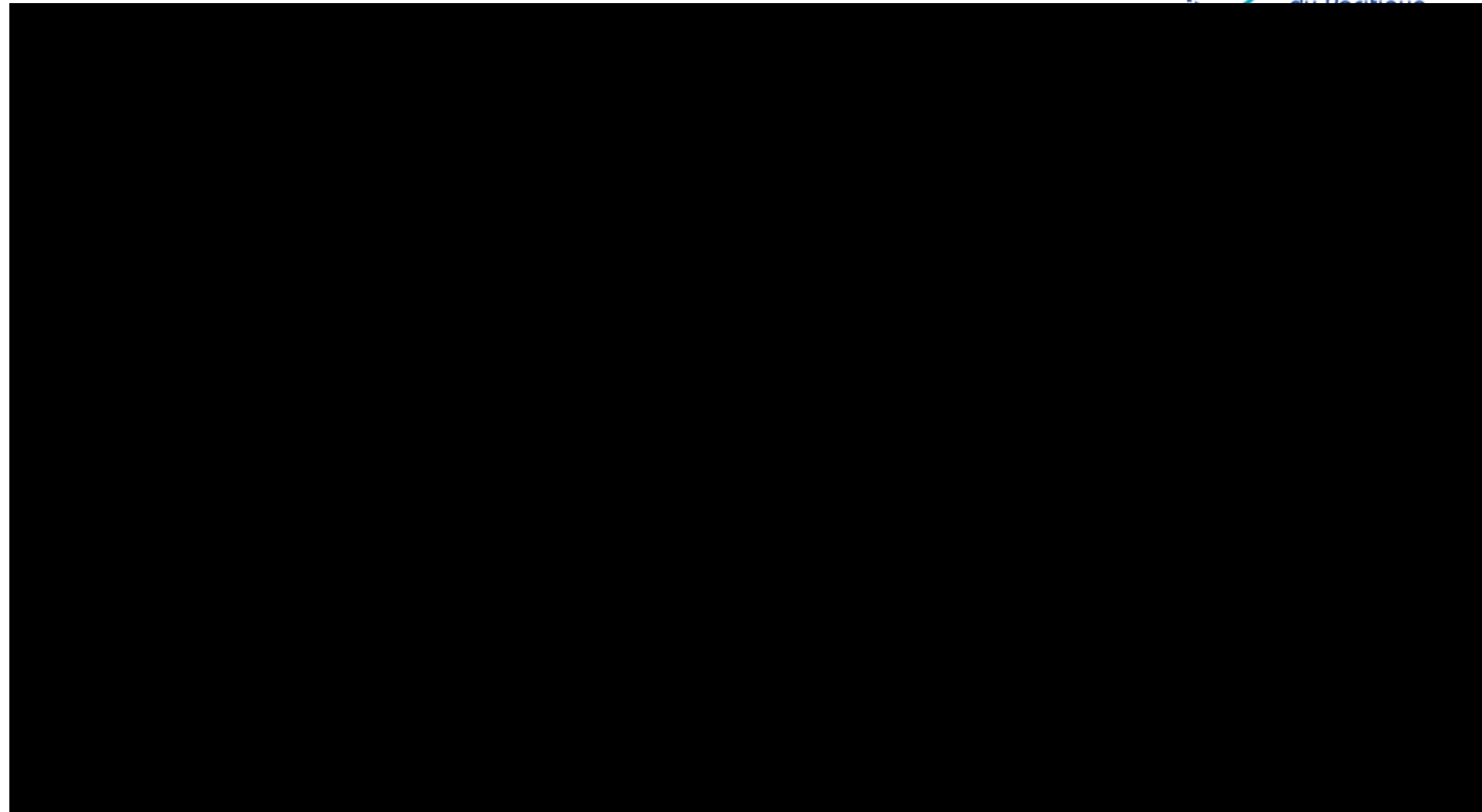
- ❑ Engagement, communications, information sharing, support and coordination
- ❑ Geospatial and surveying activities and contributions at community, national, regional and global levels.
- ❑ Strengthened national geospatial and surveying legislation.
- ❑ Geospatial and surveying technology, software and geodetic infrastructure are upgraded, maintained and Capacity.
- ❑ Members modernise their respective GRFs.
- ❑ Enhance engagement and collaboration with UN, international, regional, national and private sector partners.
- ❑ Diversity of funding sources for PGSC member-determined priorities.

# Collaboration Efforts





**PGSC Council and NZIS sign off on the MoU on 9<sup>th</sup> April 2018**





## Positioning Pacific Island Countries and Territories for the Future